

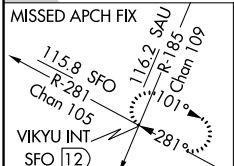
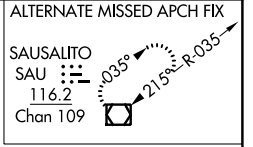
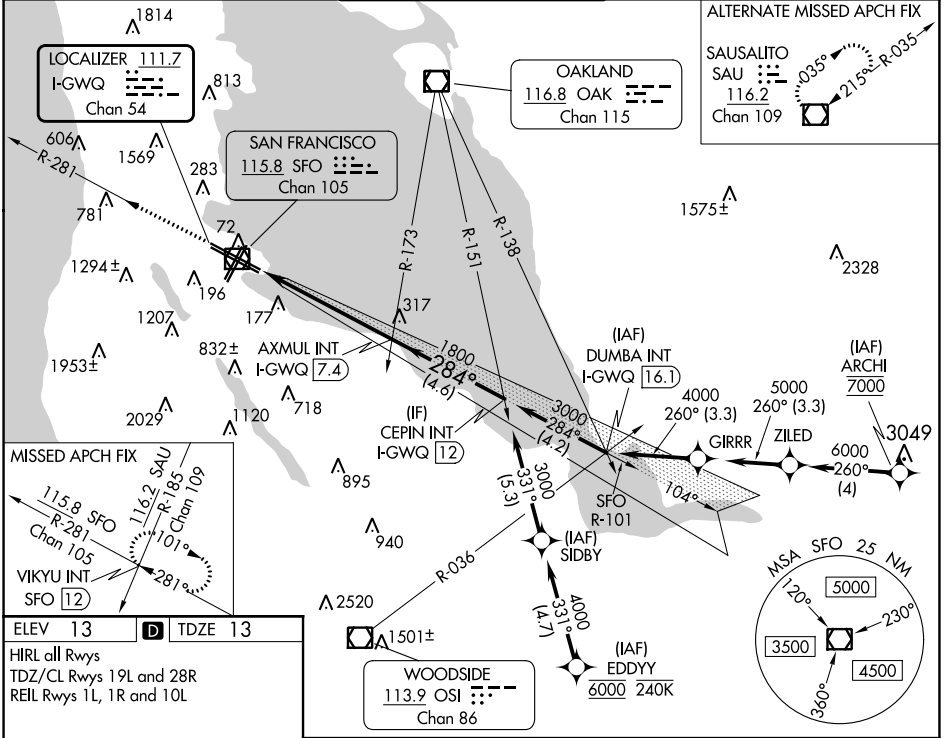
LOC/DME I-GWQ 111.7 Chan 54	APP CRS 284°	Rwy Idg 11236 TDZE 13 Apt Elev 13
--	------------------------	--

ILS RWY 28R (CAT II & III)

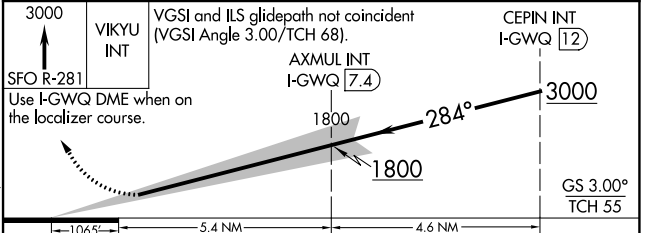
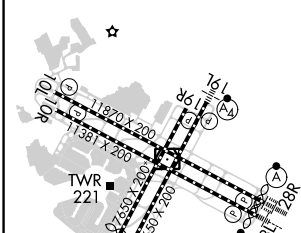
SAN FRANCISCO INTL (SFO)

RNAV 1-GPS or RADAR required for procedure entry.		ALSF-2	MISSED APPROACH: Climb to 3000 on SFO VOR/DME R-281 to VIKYU INT/SFO 12 DME and hold. *Missed approach requires minimum climb of 350 feet per NM to 1900; if unable to meet climb gradient, see ILS or LOC RWY 28L.		
---	--	--------	--	--	--

D-ATIS 113.7 115.8 118.85	NORCAL APP CON 134.5 338.2	SAN FRANCISCO TOWER 120.5 269.1	GND CON 121.8	CLNC DEL 118.2	CPDLC
---	--------------------------------------	---	-------------------------	--------------------------	-------



ELEV 13	D	TDZE 13
HIRL all Rwys TDZ/CL Rwys 19L and 28R REIL Rwys 1L, 1R and 10L		



CATEGORY	A	B	C	D
S-ILS 28R*	CAT II RA 113/12 100 DA 113			
S-ILS 28R*	CAT III RVR 06			

CATEGORY II & III ILS - SPECIAL AIRCREW & AIRCRAFT CERTIFICATION REQUIRED

SW-2, 31 OCT 2024 to 28 NOV 2024

SW-2, 31 OCT 2024 to 28 NOV 2024