

LOC/DME I-SFO 109.55 Chan 32(Y)	APP CRS 284°	Rwy Idg TDZE Apt Elev	10275 13 13
--	------------------------	-----------------------------	--

ILS or LOC RWY 28L

SAN FRANCISCO INTL (SFO)

DME required. RNP APCH-GPS or RADAR required for procedure entry.

⚠ Circling NA to Rwys 10L, 10R, 19L, and 19R. Circling to Rwy 1L and 1R NA at night. Simultaneous approach authorized. Simultaneous operations require use of vertical guidance; maintain last assigned altitude until established on glideslope. LOC procedure NA during simultaneous operations.

*RVR 1800 authorized with use of FD or AP or HUD to DA.

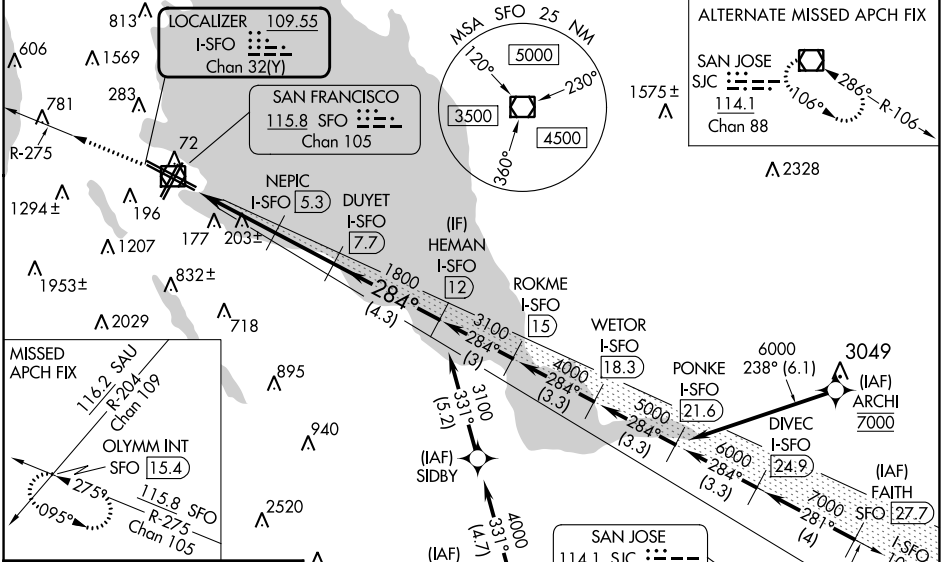
† For inop ALS, increase S-ILS 28L all Cats visibility to 2½ SM.

**For inop ALS increase S-LOC 28L Cat C/D visibility to 2½ SM.

MALSR
AS

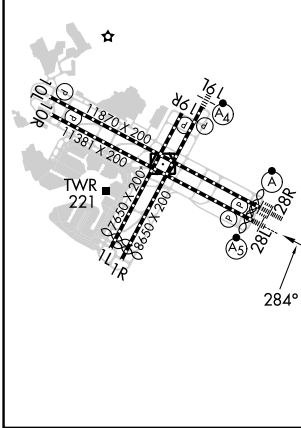
MISSED APPROACH: Climb to 4000 on SFO VOR/DME R-275 to OLYMM INT/SFO 15.4 DME and hold, continue climb-in-hold to 4000. #Missed approach requires minimum climb of 330 feet per NM to 1600.

D-ATIS 113.7 115.8 118.85	NORCAL APP CON 134.5 338.2	SAN FRANCISCO TOWER 120.5 269.1	GND CON 121.8	CLNC DEL 118.2	CPDLC
-------------------------------------	--------------------------------------	---	-------------------------	--------------------------	-------



ELEV 13	D	TDZE 13
---------	----------	---------

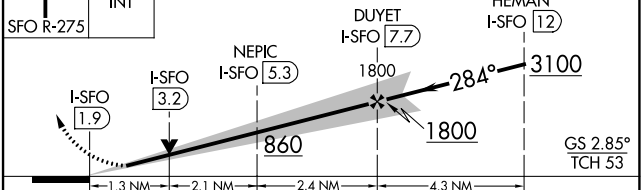
HIRL All Rwys
TDZ/CL Rwys 19L and 28R
REIL Rwys 1L, 1R and 10L



4000
SFO R-275

OLYMM INT

VGSI and ILS glidepath not coincident (VGSI Angle 2.85/TCH 67). Use I-SFO DME when on the localizer course.



CATEGORY	A	B	C	D
S-ILS 28L#*	213/24		200 (200-½)	
S-ILS 28L†	789-1¾		776 (800-1¾)	
S-LOC 28L#	460/24 447 (500-½)		460/45 447 (500-¾)	
S-LOC 28L**	860/24 847 (900-½)	860/40 847 (900-¾)	860-1⅞	847 (900-1⅞)
C CIRCLING	860-1¼ 847 (900-1¼)	960-1¼ 947 (1000-1¼)	1560-3 1547 (1600-3)	NA

SW-2, 31 OCT 2024 to 28 NOV 2024

SW-2, 31 OCT 2024 to 28 NOV 2024