

WAAS CH <b>93946</b> <b>W10A</b>	APP CRS <b>107°</b>	Rwy Idg <b>11193</b> TDZE <b>7</b> Apt Elev <b>13</b>
--	------------------------	---

# RNAV (GPS) RWY 10L

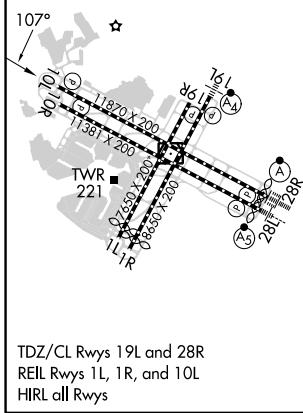
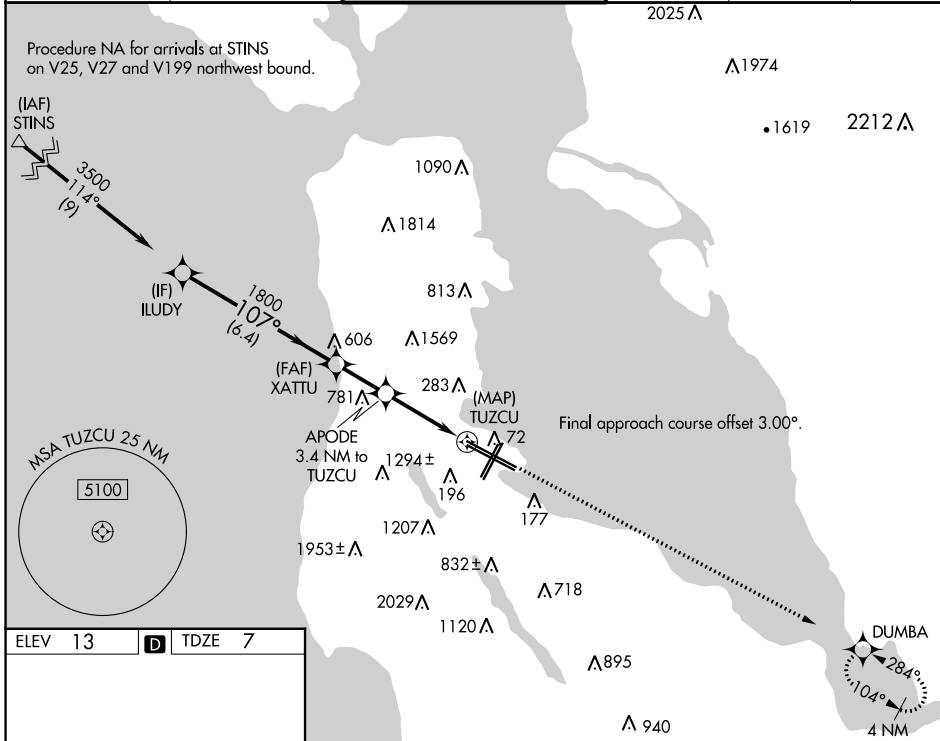
SAN FRANCISCO INTL (SFO)

RNP APCH - GPS.

▼ For uncompensated Baro-VNAV systems, LNAV/VNAV NA below 4°C or above 54°C. Rwy 10L helicopter visibility reduction below RVR 4000 NA.

▲ MISSED APPROACH: Climb to 500, then climb to 3000 direct DUMBA and hold.

D-ATIS <b>113.7 115.8</b> <b>118.85</b>	NORCAL APP CON <b>134.5 338.2</b>	SAN FRANCISCO TOWER <b>120.5 269.1</b>	GND CON <b>121.8</b>	CLNC DEL <b>118.2</b>	CPDLC
---	--------------------------------------	---	-------------------------	--------------------------	-------



	CATEGORY		A	B	C	D
LPV	DA	257/40		250 (300-3/4)		
LNAV/VNAV	DA	494-1 3/8		487 (500-1 3/8)		
LNAV	MDA	1080-1 1/4 1073 (1100-1 1/4)	1080-1 1/2 1073 (1100-1 1/2)	1080-3		1073 (1100-3)

SW-2, 31 OCT 2024 to 28 NOV 2024

SW-2, 31 OCT 2024 to 28 NOV 2024