

LOC/DME I-SMX 108.9 Chan 26	APP CRS 120°	Rwy Idg 8004 TDZE 230 Apt Elev 261
--	------------------------	---

ILS or LOC RWY 12

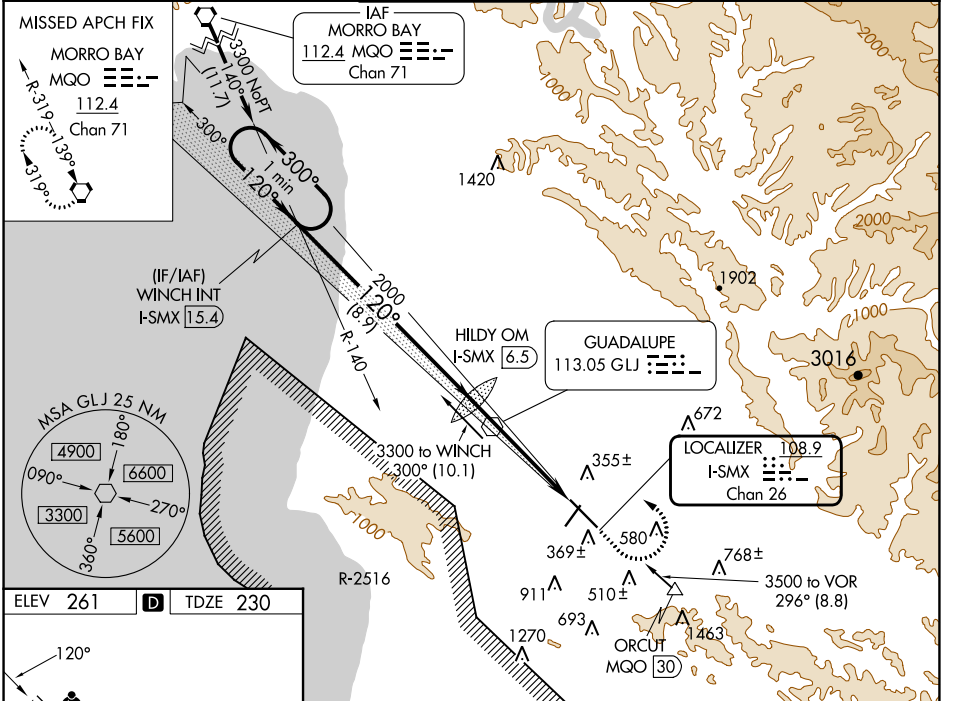
SANTA MARIA PUB/CAPT G ALLAN HANCOCK FLD (SMX)

⚠ Night Landing: Rwy 2 NA. VDP NA when using San Luis Obispo altimeter setting. When local altimeter setting not received, use San Luis Obispo altimeter setting and increase DA to 489 feet; increase all MDA 60 feet and S-LOC visibility Cat C and D to RVR 5500. For inop MALS, increase S-LOC 12 Cat C/D visibility to 1½ mile.
RVR 1800 authorized with use of FD or AP or HUD to DA; NA when using San Luis Obispo altimeter setting.

MALS
AS

MISSED APPROACH:
Climb to 800, then climbing left turn to 5000 direct MQO VORTAC and hold.

ATIS 121.15	SANTA BARBARA APP CON* 124.15 327.8	SANTA MARIA TOWER* 118.3 (CTAF) 239.25	GND CON 121.9	UNICOM 122.95
-----------------------	---	--	-------------------------	-------------------------



ELEV 261	D	TDZE 230
----------	----------	----------

FAF to MAP 5 NM					
Knots	60	90	120	150	180
Min:Sec	5:00	3:20	2:30	2:00	1:40

One Minute Holding Pattern

WINCH I-SMX 1.5.4

HILDY OM I-SMX 6.5

800 5000 MQO

* I-SMX 2.7 I-SMX 1.5

* LOC only.

8.9 NM 3.8 NM 1.2 NM

CATEGORY	A	B	C	D
S-ILS 12#	430/24 200 (200-½)			
S-LOC 12	680/24 450 (500-½)		680/50 450 (500-1)	
CIRCLING	860-1 599 (600-1)	1000-1 739 (800-1)	1420-3 1159 (1200-3)	1520-3 1259 (1300-3)

SW-3, 31 OCT 2024 to 28 NOV 2024

SW-3, 31 OCT 2024 to 28 NOV 2024