

HI-ILS or LOC W RWY 15

LOC I-JKC 108.9	APCH CRS 149°	Rwy ldg 11,758 THRE 163 Arprt Elev 165
---------------------------	-------------------------	---

[USAF]

BARKSDALE AFB (KBAD)

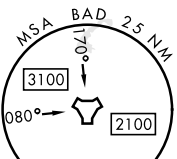
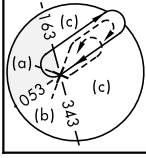
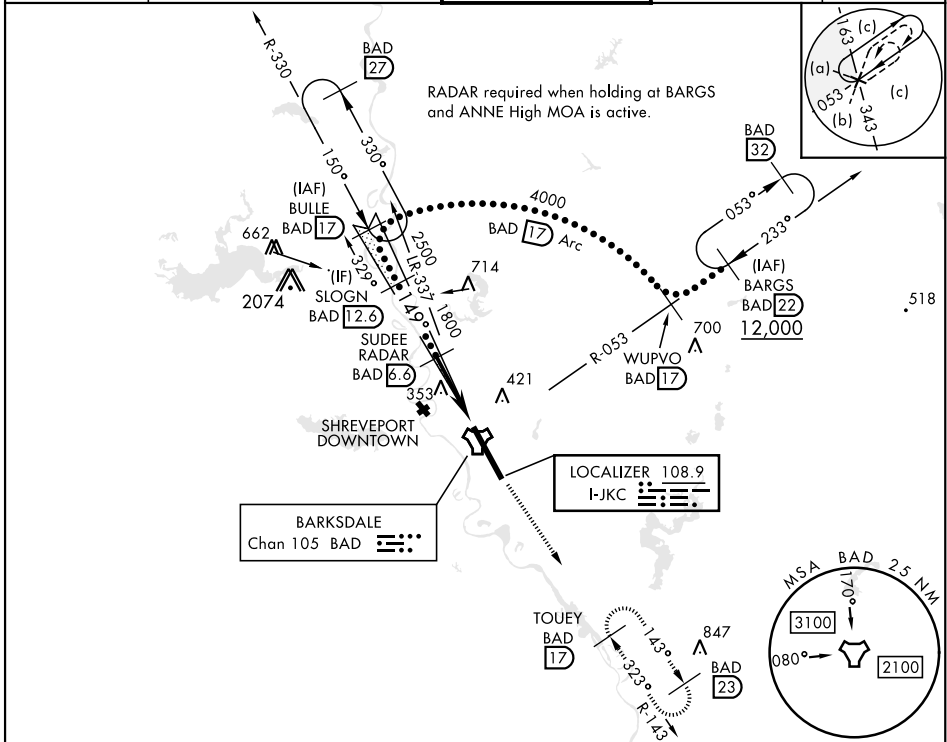
RADAR or DME required



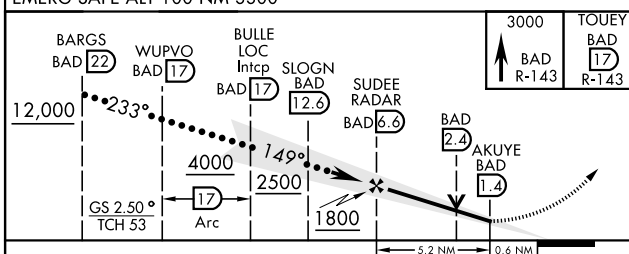
MISSED APPROACH: Climb to 3000 via BAD R-143 direct TOUEY and hold.

- * When ALS inop, increase CAT CDE RVR to 40 and vis to 3/4 mile.
- ** When ALS inop, increase CAT CDE vis to 1 3/8 miles.
- *** Circling not authorized W of Rwy.

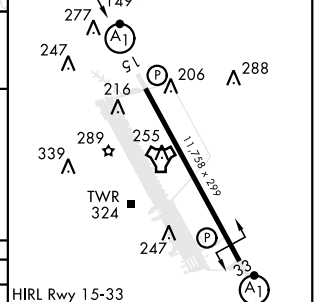
ATIS 307.025	SHREVEPORT APP CON 320°-152° 123.75 360.725 153°-319° 119.9 335.55	TOWER ★ 128.25 278.3	GND CON 121.8 253.5	ASR
------------------------	--	--------------------------------	-------------------------------	-----



EMERG SAFE ALT 100 NM 3300



ELEV 165	THRE 163
----------	----------



CATEGORY	C	D	E
S-ILS 15 *	363/24	200	(200-1/2)
S-LOC 15 **	640/50	477	(500-1)
*** CIRCLING	NOT AUTHORIZED	760-2 595 (600-2)	780-2 1/4 615 (700-2 1/4)

HIRL Rwy 15-33					
FAF to MAP 5.2 NM					
Knots	120	140	160	180	200
Min:Sec	2:36	2:14	1:57	1:44	1:34

HI-ILS or LOC W RWY 15

SC-4, 31 OCT 2024 to 28 NOV 2024

SC-4, 31 OCT 2024 to 28 NOV 2024