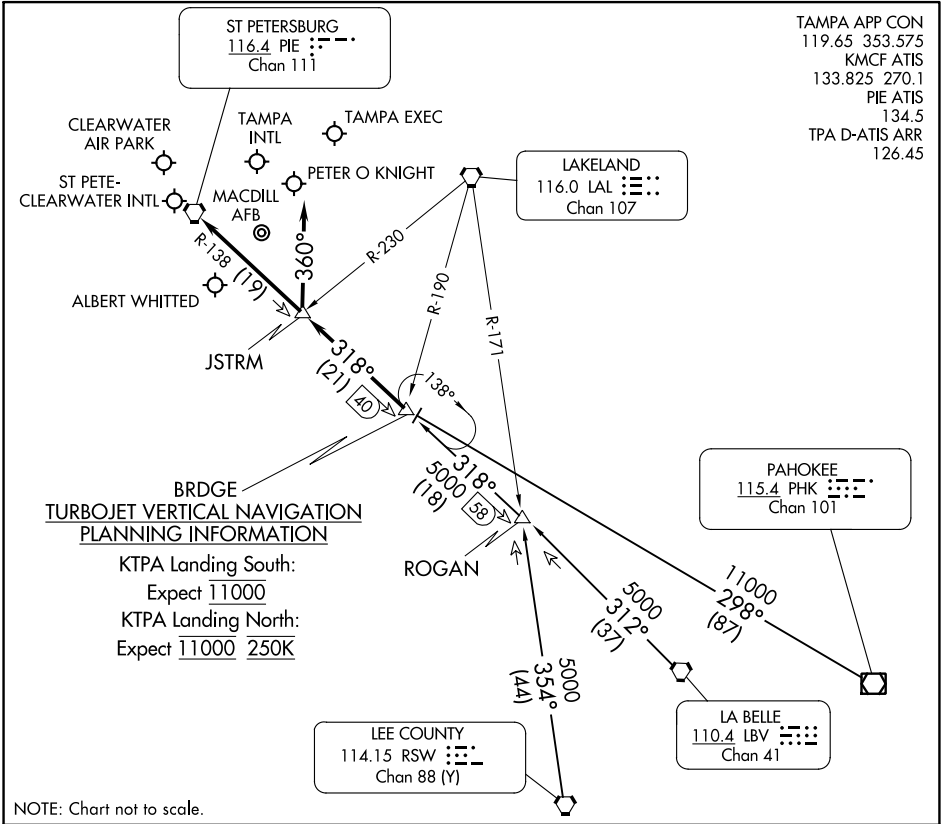


BRDGE NINE ARRIVAL

TAMPA, FLORIDA



TAMPA APP CON
 119.65 353.575
 KMCF ATIS
 133.825 270.1
 PIE ATIS
 134.5
 TPA D-ATIS ARR
 126.45

TURBOJET VERTICAL NAVIGATION PLANNING INFORMATION

KTPA Landing South:
 Expect 11000
 KTPA Landing North:
 Expect 11000 250K

NOTE: Chart not to scale.

ARRIVAL ROUTE DESCRIPTION

LA BELLE TRANSITION (LBV.BRDGE9): From over LBV VORTAC on LBV R-312 and PIE R-138 to BRDGE thence. . . .

LEE COUNTY TRANSITION (RSW.BRDGE9): From over RSW VORTAC on RSW R-354 to ROGAN, then on PIE R-138 to BRDGE thence. . . .

PAHOKEE TRANSITION (PHK.BRDGE9): From over PHK VOR/DME on PHK R-298 to BRDGE thence. . . .

KTPA:
RUNWAYS 19L/R: From over BRDGE on PIE R-138 to JSTRM. Depart JSTRM heading 360° for RADAR vectors to final approach course.
RUNWAYS 1L/R: From over BRDGE on PIE R-138 to PIE VORTAC. Expect RADAR vectors to final approach course after BRDGE.

KPIE, KCLW, KTPF, KSPG, KMCF, KVDF:
 From over BRDGE on PIE R-138 to PIE VORTAC. Expect RADAR vectors to final approach course/airport after BRDGE.

LOST COMMUNICATIONS: Standard.

SE-3, 31 OCT 2024 to 28 NOV 2024

SE-3, 31 OCT 2024 to 28 NOV 2024

BRDGE NINE ARRIVAL

TAMPA, FLORIDA