

HI-TACAN RWY 31

TACAN Chan 53	APCH CRS 304°	Rwy ldg 12,803 TDZE 1037 Arprt Elev 1078
-------------------------	-------------------------	---

[USAF]

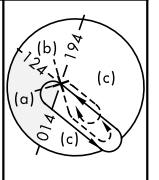
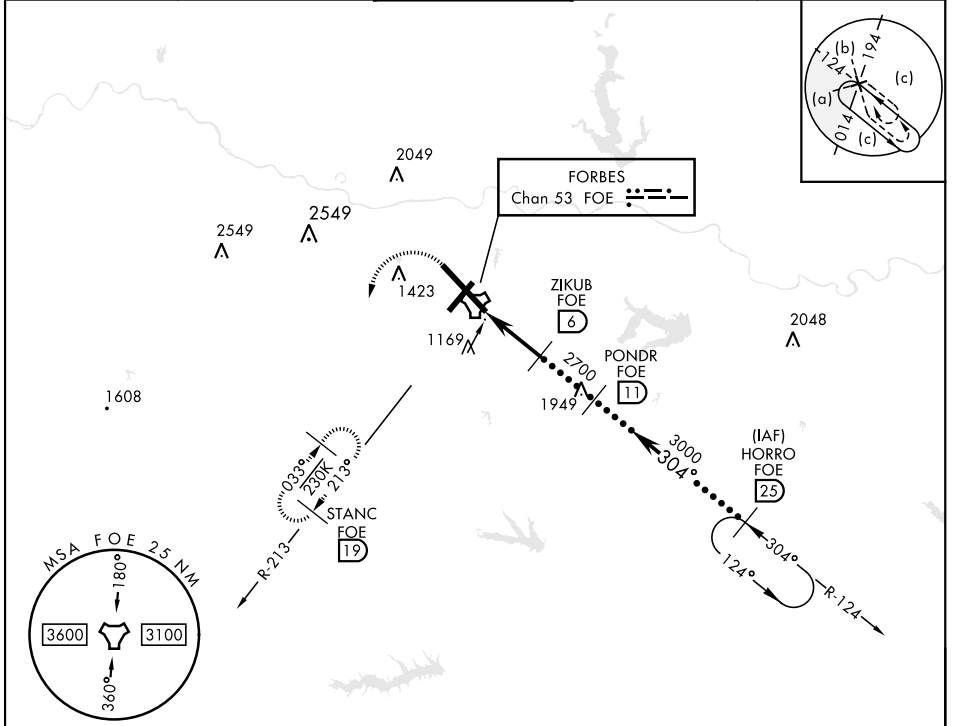
TOPEKA RGNL (KFOE)

M * When ALS inop, increase CAT CDE vis to 1½ miles.

MALS R

MISSED APPROACH: Climbing left turn to 3000 via heading 190° and FOE TACAN R-213 to STANC/19 DME and hold.

ATIS 128.25	KANSAS CITY CENTER 123.8 343.7	FORBES TOWER ★ 120.8 (CTAF) 340.2	GND CON 118.425 275.8	UNICOM 122.95
-----------------------	--	---	---------------------------------	-------------------------



NC-2, 31 OCT 2024 to 28 NOV 2024

NC-2, 31 OCT 2024 to 28 NOV 2024

EMERG SAFE ALT 100 NM 3600

3000 FOE R-213	STANC FOE 19	TACAN BUMKE 0.8	ZIKUB 6	PONDNR 11	HORRO 25	FL250 10,000
5.2 NM		2700		3000		2.90° TCH 58
CATEGORY	C	D	E			
S-31 *	1520/50	483 (500-1)				
CIRCLING	1580-1½ 502 (600-1½)	1700-2 622 (700-2)	1720-2¼ 642 (700-2¼)			

ELEV 1078 **D** TDZE 1037

Rwy 3 ldg 7001'
Rwy 21 ldg 7001'

MIRL Rwy 3-21 **L**
REIL Rwy 3, 13, and 21 **L**
HIRL Rwy 13-31 **L**

HI-TACAN RWY 31