

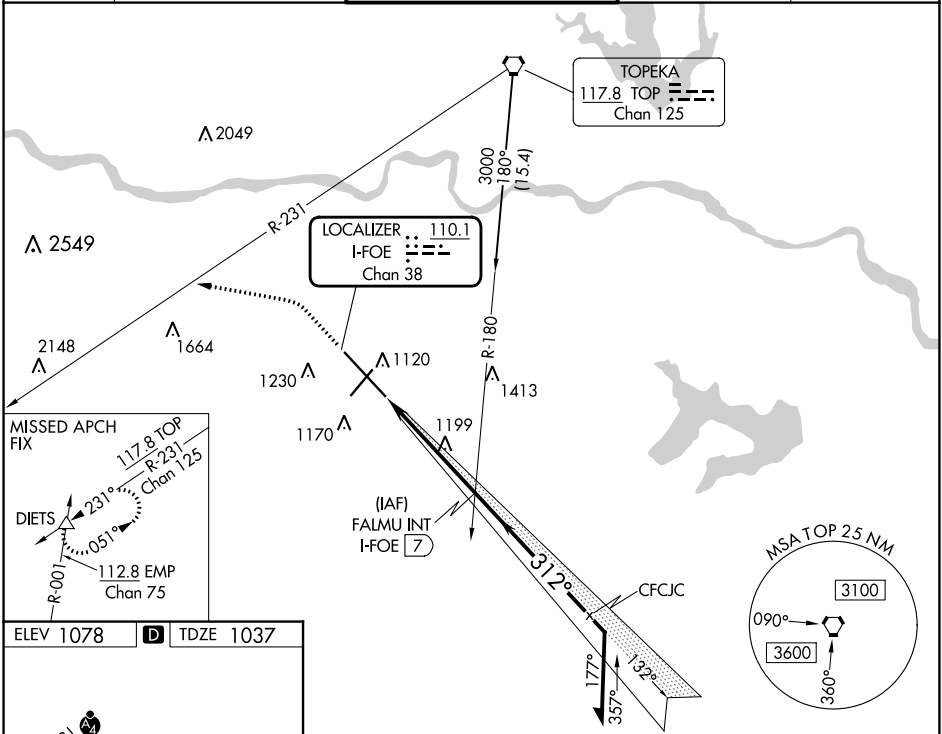
LOC/DME I-FOE 110.1 Chan 38	APP CRS 312°	Rwy Idg 12803 TDZE 1037 Apt Elev 1078
---	------------------------	--

ILS or LOC RWY 31

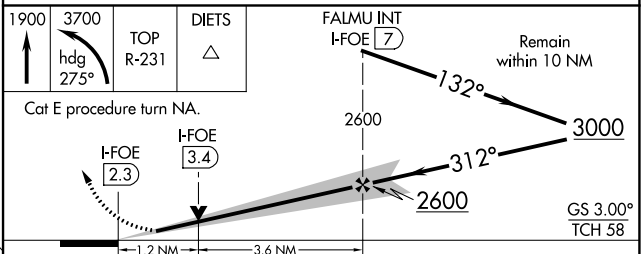
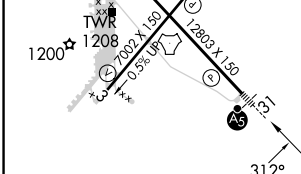
TOPEKA RGNL (FOE)

<p>⚠ RADAR required for Cat E for procedure entry.</p> <p>⚠ For inop ALS, increase S-ILS Cat E visibility to RVR 4000 and S-LOC Cat E visibility to 1¼ SM. *RVR 1800 authorized with use of FD or AP or HUD to DA.</p>		<p>MALSR</p>	<p>MISSED APPROACH: Climb to 1900 then climbing left turn to 3700 on heading 275° and on TOP VORTAC R-231 to DIETS INT and hold.</p>
--	--	--------------	--

ATIS 128.25	KANSAS CITY CENTER 123.8 343.7	FORBES TOWER* 120.8 (CTAF) 0 340.2	GND CON 118.425 275.8	UNICOM 122.95
-----------------------	--	--	---------------------------------	-------------------------



ELEV 1078	D TDZE 1037
-----------	-------------



REIL Rws 3, 13 and 21 MIRL Rwy 3-21 HIRL Rwy 13-31 FAF to MAP 4.7 NM	<table border="1"> <tr> <th>CATEGORY</th> <th>A</th> <th>B</th> <th>C</th> <th>D</th> <th>E</th> </tr> <tr> <td>S-ILS 31*</td> <td colspan="5">1237/24 200 (200-½)</td> </tr> <tr> <td>S-LOC 31</td> <td>1460/24 423 (400-½)</td> <td colspan="4">1460/40 423 (400-¾)</td> </tr> <tr> <td>CIRCLING</td> <td>1520-1 442 (500-1)</td> <td>1580-1 502 (600-1)</td> <td>1580-1½ 502 (600-1½)</td> <td>1700-2 622 (700-2)</td> <td>1720-2¼ 642 (700-2¼)</td> </tr> </table>	CATEGORY	A	B	C	D	E	S-ILS 31*	1237/24 200 (200-½)					S-LOC 31	1460/24 423 (400-½)	1460/40 423 (400-¾)				CIRCLING	1520-1 442 (500-1)	1580-1 502 (600-1)	1580-1½ 502 (600-1½)	1700-2 622 (700-2)	1720-2¼ 642 (700-2¼)
CATEGORY	A	B	C	D	E																				
S-ILS 31*	1237/24 200 (200-½)																								
S-LOC 31	1460/24 423 (400-½)	1460/40 423 (400-¾)																							
CIRCLING	1520-1 442 (500-1)	1580-1 502 (600-1)	1580-1½ 502 (600-1½)	1700-2 622 (700-2)	1720-2¼ 642 (700-2¼)																				

NC-2, 31 OCT 2024 to 28 NOV 2024

NC-2, 31 OCT 2024 to 28 NOV 2024