

# RNAV (GPS) RWY 21

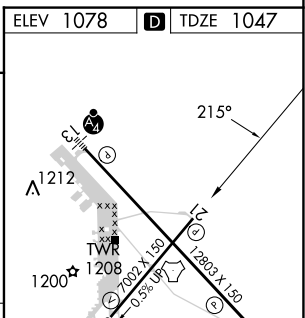
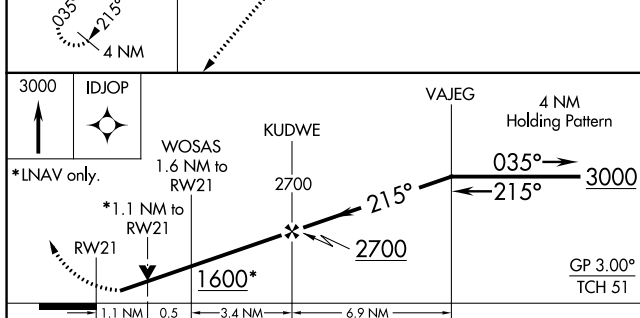
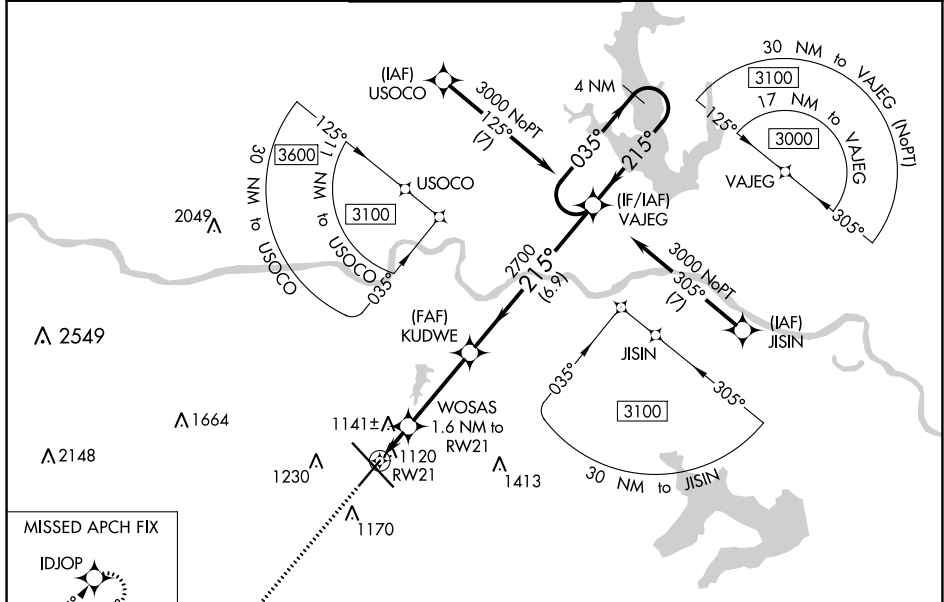
TOPEKA RGNL (F0E)

|                                 |                        |                             |   |
|---------------------------------|------------------------|-----------------------------|---|
| WAAS<br>CH <b>42834</b><br>W21A | APP CRS<br><b>215°</b> | Rwy Idg<br>TDZE<br>Apt Elev | <b>7001</b><br><b>1047</b><br><b>1078</b> |
|---------------------------------|------------------------|-----------------------------|---|

**⚠** For uncompensated Baro-VNAV systems, LNAV/VNAV NA below -19°C (-2°F) or above 54°C (130°F).  
**⚠** When local altimeter setting not received, use Philip Billard Muni altimeter setting and increase all DA 45 feet and all MDA 60 feet, increase LPV and LNAV/VNAV all Cats visibility to 1 mile and increase LNAV Cat C/D visibility and Circling Cat D visibility ½ mile. DME/DME RNP-0.3 NA. VDP and Baro-VNAV NA when using Philip Billard Muni altimeter setting. Helicopter visibility reduction below ¾ SM NA.

MISSED APPROACH:  
Climb to 3000 direct IDJOP and hold.

|                       |  |  |                                 |                         |
|-----------------------|--|--|---------------------------------|-------------------------|
| ATIS<br><b>128.25</b> | KANSAS CITY CENTER<br><b>123.8 343.7</b> | FORBES TOWER*<br><b>120.8 (CTAF) 340.2</b> | GND CON<br><b>118.425 275.8</b> | UNICOM<br><b>122.95</b> |
|-----------------------|--|--|---------------------------------|-------------------------|



| CATEGORY     | A                     | B                     | C                       | D                     |
|--------------|-----------------------|-----------------------|-------------------------|-----------------------|
| LPV DA       |                       | 1311-1                | 264 (300-1)             |                       |
| LNAV/VNAV DA |                       | 1297-¾                | 250 (300-¾)             |                       |
| LNAV MDA     | 1440-1                | 393 (400-1)           | 1440-1½                 | 393 (400-1½)          |
| CIRCLING     | 1520-1<br>442 (500-1) | 1580-1<br>502 (600-1) | 1580-1½<br>502 (600-1½) | 1700-2<br>622 (700-2) |

ELEV 1078 **D** TDZE 1047

REIL Rwy 3, 13 and 21  
 MIRL Rwy 3-21 **⓪**  
 HIRL Rwy 13-31 **⓪**

NC-2, 31 OCT 2024 to 28 NOV 2024

NC-2, 31 OCT 2024 to 28 NOV 2024