

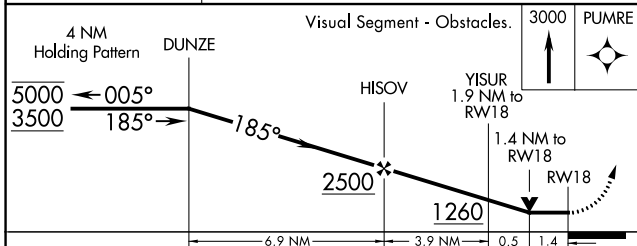
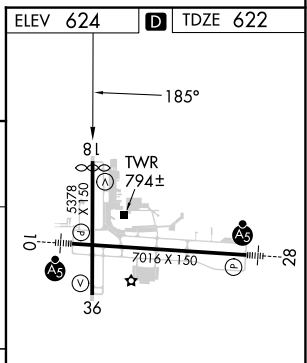
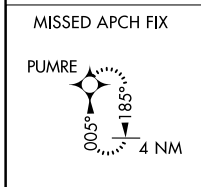
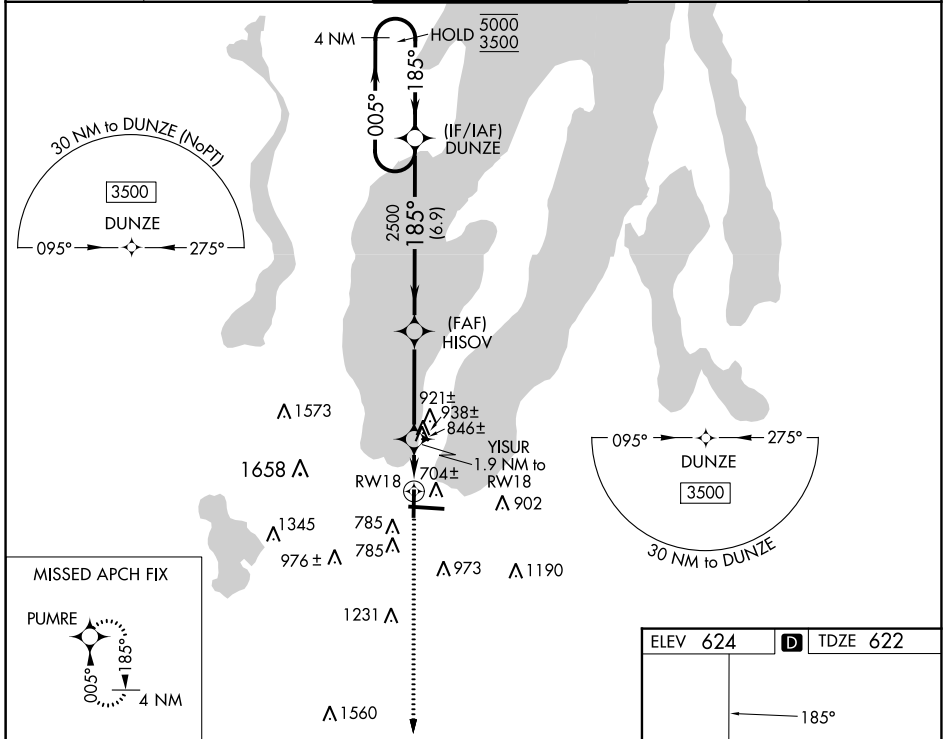
WAAS CH <b>90335</b> <b>W18A</b>	APP CRS <b>185°</b>	Rwy Idg TDZE <b>622</b> Apt Elev <b>624</b>	<b>4838</b>
--	------------------------	---	-------------

# RNAV (GPS) RWY 18

CHERRY CAPITAL (TVC)

RNP APCH - GPS.		MISSED APPROACH: Climb to 3000 direct PUMRE and hold.	
▼ ▲ Rwy 18 helicopter visibility reduction below ¾ SM NA.			

ATIS <b>119.175</b>	MINNEAPOLIS CENTER <b>132.9 338.3</b>	TRAVERSE CITY TOWER* <b>124.2 (CTAF) 348.6</b>	GND CON <b>121.8 348.6</b>	UNICOM <b>122.95</b>
------------------------	--	---	-------------------------------	-------------------------



CATEGORY	A	B	C	D
LP MDA	1100-1	478 (500-1)	1100-1 3/8	478 (500-1 3/8)
LNAV MDA	1200-1	578 (600-1)	1200-1 5/8	578 (600-1 5/8)
CIRCLING	1200-1 576 (600-1)	1260-1 636 (700-1)	1500-2 1/2 876 (900-2 1/2)	1720-3 1096 (1100-3)

EC-1, 31 OCT 2024 to 28 NOV 2024

EC-1, 31 OCT 2024 to 28 NOV 2024