

# TIKEE FOUR ARRIVAL (RNAV)

WASHINGTON, DC

NE-3, 31 OCT 2024 to 28 NOV 2024

**ARRIVAL ROUTE DESCRIPTION**

**BONE TRANSITION (BONE.TIKEE4):**  
**KESSEL TRANSITION (ESL.TIKEE4):**  
**SEALZ TRANSITION (SEALZ.TIKEE4):**

All aircraft types landing HEF/NYG/RMN/HWY/CJR/EZF:  
 From TIKEE on track 090° to JETIS, then on heading 090° or as assigned by ATC. Expect RADAR vectors to final approach course.

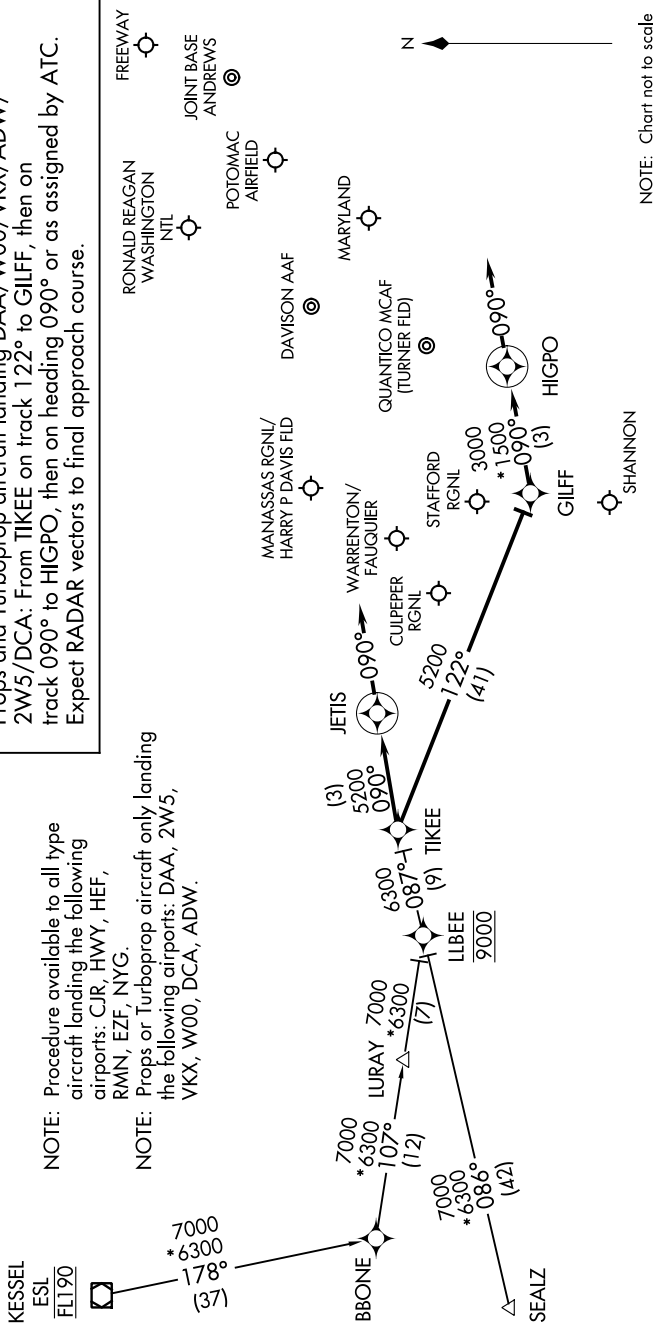
Props and Turboprop aircraft landing DAA/W00/VKX/ADW/  
 2W5/DCA: From TIKEE on track 122° to GILFF, then on  
 track 090° to HIGPO, then on heading 090° or as assigned by ATC.  
 Expect RADAR vectors to final approach course.

RNAV 1- DME/DME/IRU or GPS.  
 RADAR required.

POTOMAC APP CON  
 120.45 306.925  
 DCA D-ATIS  
 132.65  
 ADW D-ATIS  
 133.675 251.05  
 \*DAA ATIS  
 128.175

**NOTE:** Procedure available to all type aircraft landing the following airports: CJR, HWY, HEF, RMN, EZF, NYG.

**NOTE:** Props or Turboprop aircraft only landing the following airports: DAA, 2W5, VKX, W00, DCA, ADW.



# TIKEE FOUR ARRIVAL (RNAV)

WASHINGTON, DC

NE-3, 31 OCT 2024 to 28 NOV 2024