

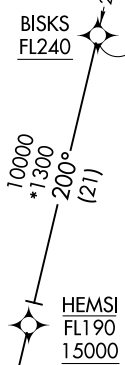
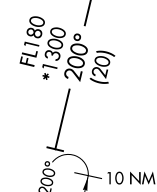
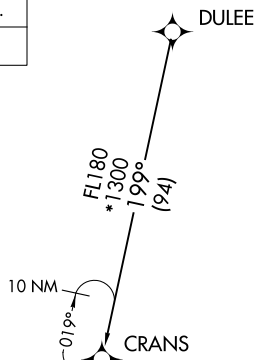
CLMNT TWO ARRIVAL (RNAV) Transition Routes

WEST PALM BEACH, FLORIDA

RNAV 1 - DME/DME/IRU or GPS.

RADAR required.

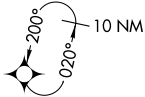
PALM BEACH APP CON
124.6 317.4
F45 CTAF
123.075
PBI D-ATIS
123.75



NOTE: Jet aircraft only.
NOTE: Do not file CRANS, BISK Transitions-
To be assigned by ATC

See following page
for arrival routes.

CLMNT
11000 250K
9000



NOTE: Chart not to scale.

(CONTINUED ON FOLLOWING PAGE)

BISK TRANSITION (BISK.CLMNT2)
CRANS TRANSITION (CRANS.CLMNT2)
DULEE TRANSITION (DULEE.CLMNT2)

SE-3, 31 OCT 2024 to 28 NOV 2024

SE-3, 31 OCT 2024 to 28 NOV 2024