

LOC I-PWB 111.9	APP CRS 279°	Rwy Idg TDZE Apt Elev	8240 18 20
---------------------------	------------------------	-----------------------------	---------------------------------------

ILS or LOC RWY 28R

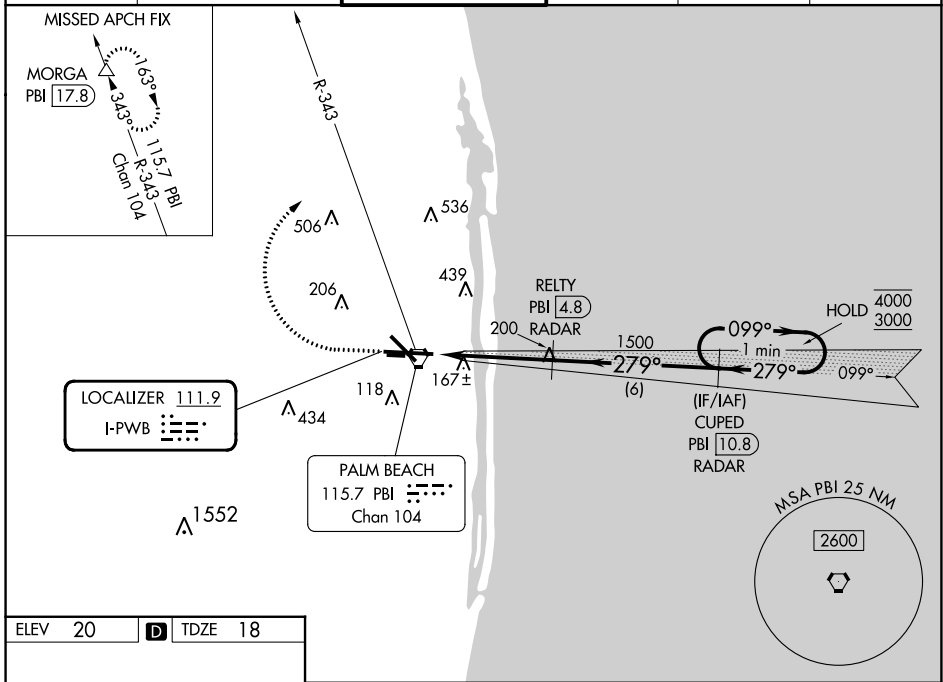
PALM BEACH INTL (PBI)

DME required. RADAR required for procedure entry.

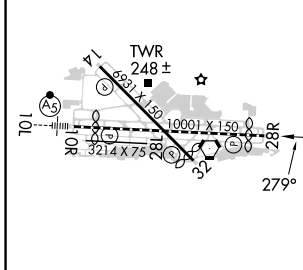
▲

MISSED APPROACH: Climb to 500 then climbing right turn to 3000 on PBI VORTAC R-343 to MORGA/PBI 17.8 DME and hold.

D-ATIS 123.75	PALM BEACH APP CON 128.3 317.4	PALM BEACH TOWER 119.1 257.8	GND CON 121.9 284.6	CLNC DEL 121.6 284.6	CPDLC
-------------------------	--	--	-------------------------------	--------------------------------	-------



ELEV 20	D	TDZE 18
---------	----------	---------



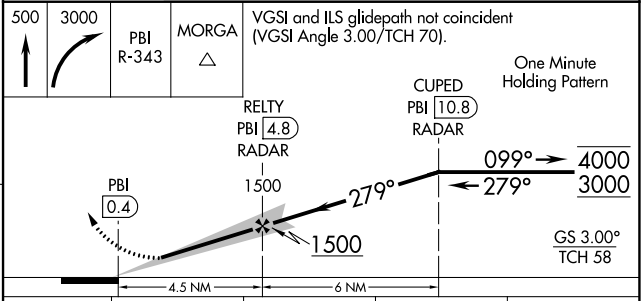
HIRL Rwy 10L-28R

REIL Rwys 10R, 14, 28L, 28R and 32

MIRL Rwys 14-32 and 10R-28L

FAF to MAP 4.5 NM

Knots	60	90	120	150	180
Min:Sec	4:30	3:00	2:15	1:48	1:30



CATEGORY	A	B	C	D
S-ILS 28R	218/40 200 (200-3/4)			
S-LOC 28R	460/55	442 (500-1)	460-1 3/8	442 (500-1 3/8)
C CIRCLING	560-1	540 (600-1)	740-2 720 (800-2)	780-2 1/2 760 (800-2 1/2)

SE-3, 31 OCT 2024 to 28 NOV 2024

SE-3, 31 OCT 2024 to 28 NOV 2024