

WAAS CH 53310 W35A	APP CRS 358°	Rwy Idg TDZE Apt Elev	5501 821 825
--	------------------------	-----------------------------	---

RNAV (GPS) RWY 35

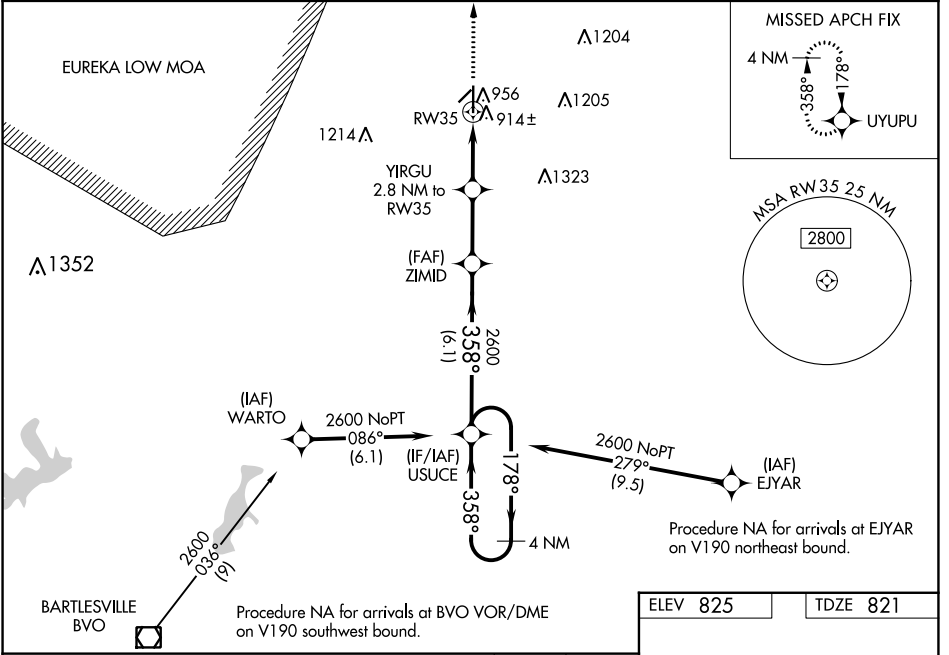
INDEPENDENCE MUNI (IDP)

⚠ For uncompensated Baro-VNAV systems, LNAV/VNAV NA below -16°C (4°F) or above 54°C (130°F). Circling Rwy 4, 22 NA at night.
DME/DME RNP-0.3 NA. For inop ALS, increase LNAV/VNAV DA all Cats visibilities to 7/5 SM and LNAV MDA Cats C and D visibilities to 1 SM.

MALSR

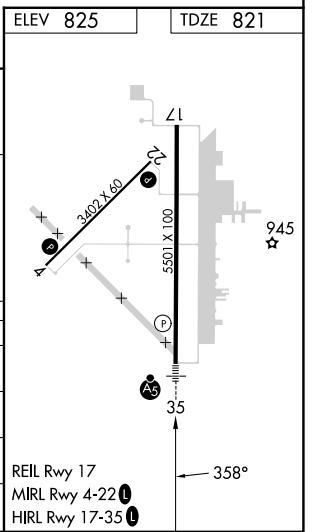
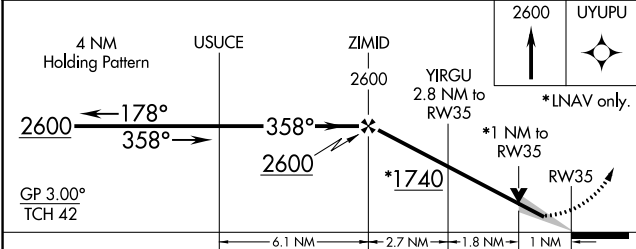
MISSED APPROACH: Climb to 2600 direct UYUPU and hold.

AWOS-3PT 118.525	KANSAS CITY CENTER 128.6 282.325	CLNC DEL 121.65	UNICOM 123.05 (CTAF)
----------------------------	--	---------------------------	--------------------------------



NC-2, 31 OCT 2024 to 28 NOV 2024

NC-2, 31 OCT 2024 to 28 NOV 2024



CATEGORY	A	B	C	D
LPV DA	1021-1/2		200 (200-1/2)	
LNAV/VNAV DA	1097-1/2		276 (300-1/2)	
LNAV MDA	1180-1/2 359 (400-1/2)		1180-5/8 359 (400-5/8)	
CIRCLING	1280-1 455 (500-1)		1340-1 1/2 515 (600-1/2) 1680-2 3/4 855 (900-2 3/4)	