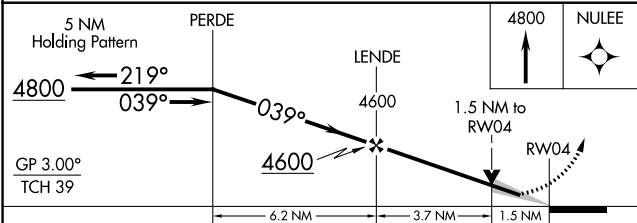
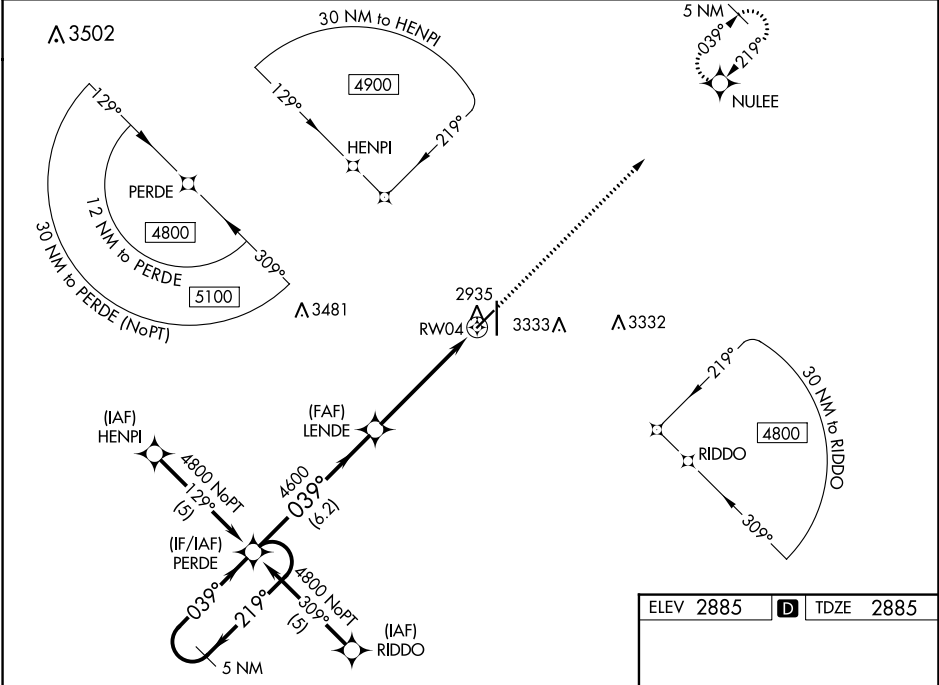


WAAS CH <b>72905</b> <b>W04A</b>	APP CRS <b>039°</b>	Rwy Idg TDZE Apt Elev	<b>5000</b> <b>2885</b> <b>2885</b>
--	------------------------	-----------------------------	---

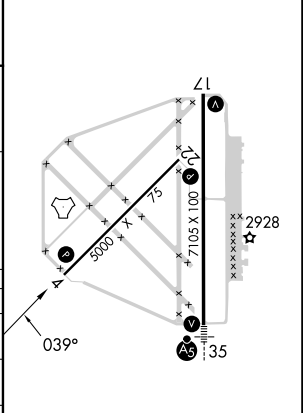
**RNAV (GPS) RWY 4**  
LIBERAL MID-AMERICA RGNL (L.B.L.)

RNP APCH - GPS.	<p><b>MISSED APPROACH:</b> Climb to 4800 direct NULEE and hold.</p>
<p>▼ For uncompensated Baro-VNAV systems, LNAV/VNAV NA below -20°C or above 54°C.</p> <p>▲ Circling NA east of Rwy 17-35. When local altimeter setting not received, use GUY altimeter setting and increase LPV DA to 3248 feet; increase LNAV/VNAV DA to 3412 feet and all visibilities 3/8 SM. Increase all MDAs 120 feet and LNAV visibility Cat C/D 3/8 SM, and Circling visibility Cat C/D 1/4 SM. Baro-VNAV and VDP NA when using GUY altimeter setting.</p>	

AWOS-3PT <b>118.375</b>	KANSAS CITY CENTER <b>134.0 257.625</b>	UNICOM <b>122.8 (CTAF)</b>
----------------------------	--	-------------------------------



ELEV 2885	<b>D</b> TDZE 2885
-----------	--------------------



CATEGORY	A	B	C	D
LPV DA	3136-1		251 (300-1)	
LNAV/ VNAV DA	3300-1 3/8		415 (500-1 3/8)	
LNAV MDA	3400-1	515 (600-1)	3400-1 3/8	515 (600-1 3/8)
<b>C</b> CIRCLING	3400-1	515 (600-1)	3400-1 1/2	3640-2 1/2
			515 (600-1 1/2)	755 (800-2 1/2)

REIL Rws 4, 17 and 22 **L**  
MIRL Rwy 4-22 **L**  
HIRL Rwy 17-35 **L**

NC-2, 31 OCT 2024 to 28 NOV 2024

NC-2, 31 OCT 2024 to 28 NOV 2024