

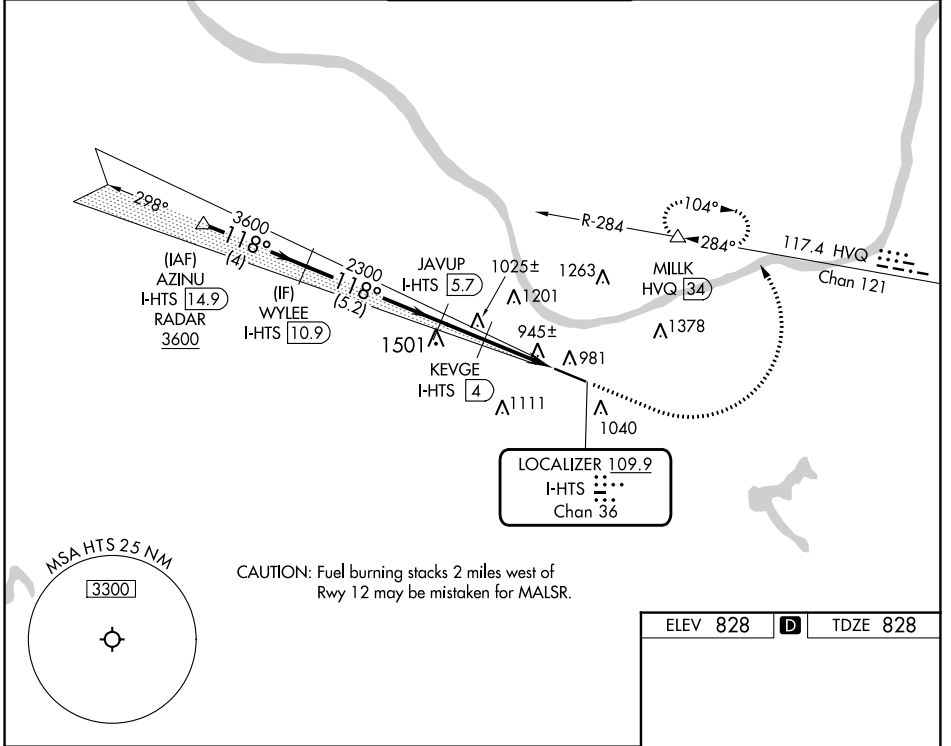
LOC/DME I-HTS <b>109.9</b> Chan 36	APP CRS <b>118°</b>	Rwy Idg <b>6516</b> TDZE <b>828</b> Apt Elev <b>828</b>
--	------------------------	---

# ILS or LOC RWY 12

TRI-STATE/MILTON J FERGUSON FLD (HTS)

DME required. RADAR required for procedure entry.		MALSR 	MISSED APPROACH: Climb to 2800 then climbing left turn to 4000 on heading 005° and HVQ VOR/DME R-284 to MILK/HVQ VOR/DME 34 DME and hold, continue to climb-in-hold to 4000.
 For inop ALS, increase S-LOC 12 Cats C and D visibility to RVR 5500. *RVR 1800 authorized with use of FD or AP or HUD to DA.			

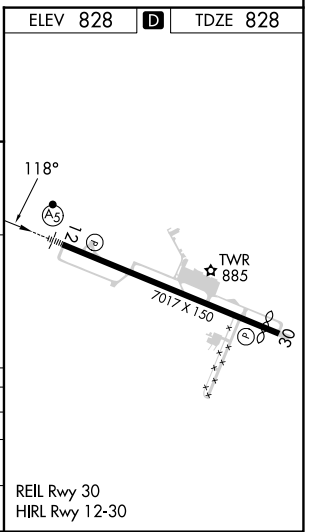
ATIS <b>125.2</b>	HUNTINGTON APP CON <b>119.75 270.1</b>	HUNTINGTON TOWER <b>118.5 270.1</b>	GND CON <b>121.9</b>	CLNC DEL <b>118.05</b>
----------------------	---	--	-------------------------	---------------------------



NE-4, 31 OCT 2024 to 28 NOV 2024

NE-4, 31 OCT 2024 to 28 NOV 2024

AZINU I-HTS <b>14.9</b> RADAR WYLEE I-HTS <b>10.9</b> JAVUP I-HTS <b>5.7</b> KEVGE I-HTS <b>4</b> I-HTS <b>2.2</b> I-HTS <b>1.3</b>	2800 4000 hdg 005°	HVQ R-284 MILK Δ		
3600 — 118° — 3600 2300 1760 GS 3.00° TCH 56	4 NM — 5.2 NM — 1.7 NM — 1.8 NM — 1 NM			
CATEGORY	A	B	C	D
S-ILS 12*	1028/24 200 (200-½)			
S-LOC 12	1200/24	372 (400-½)	1200/35	372 (400-⅝)
CIRCLING	1300-1 472 (500-1)	1380-1 552 (600-1)	1520-2 692 (700-2)	1740-3 912 (1000-2)



# ILS or LOC RWY 12