

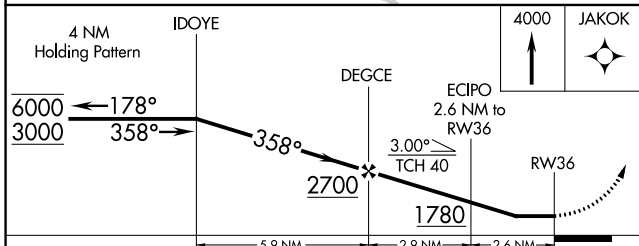
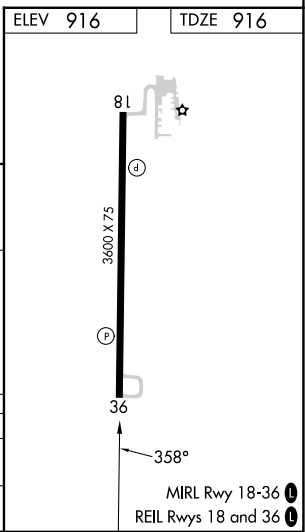
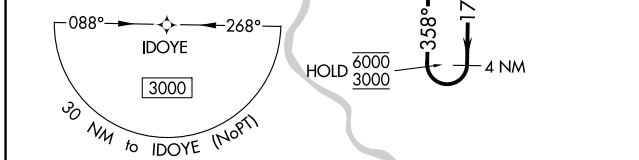
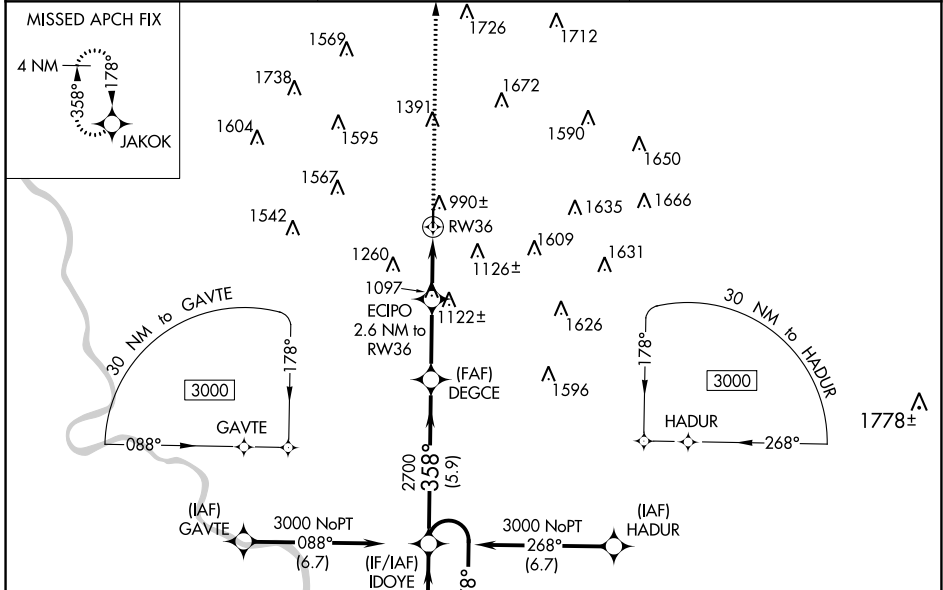
| | | |
|-------------|----------|-------------|
| APP CRS | Rwy Idg | 3600 |
| 358° | TDZE | 916 |
| | Apt Elev | 916 |

RNAV (GPS) RWY 36

GOULD PETERSON MUNI (K57)

| | |
|---|---|
| RNP APCH - GPS. | |
| <p>V Rwy 36 helicopter visibility reduction below 3/4 SM NA.</p> <p>NA Circling Rwy 18 NA at night.</p> <p>Use Shenandoah altimeter setting; when not received, use Clarinda altimeter setting and increase all MDAs 20 feet.</p> | <p>MISSED APPROACH: Climb to 4000 direct JAKOK and hold, Continue climb-in-hold to 4000</p> |

| | | |
|------------------------------|--|------------------------|
| SDA AWOS-3 125.525 | MINNEAPOLIS CENTER 119.6 290.4 | CTAF 122.9 0 |
|------------------------------|--|------------------------|



| CATEGORY | A | B | C | D |
|-------------------|-----------------------|-----------------------|-------------------------------|----|
| LNVA MDA | 1460-1 | 544 (600-1) | 1460-1 1/8 544 (600-1 1/8) | NA |
| C CIRCLING | 1520-1 604 (700-1) | 1540-1 624 (700-1) | 1680-2 1/4 764 (800-2 1/4) | NA |

NC-3, 31 OCT 2024 to 28 NOV 2024

NC-3, 31 OCT 2024 to 28 NOV 2024