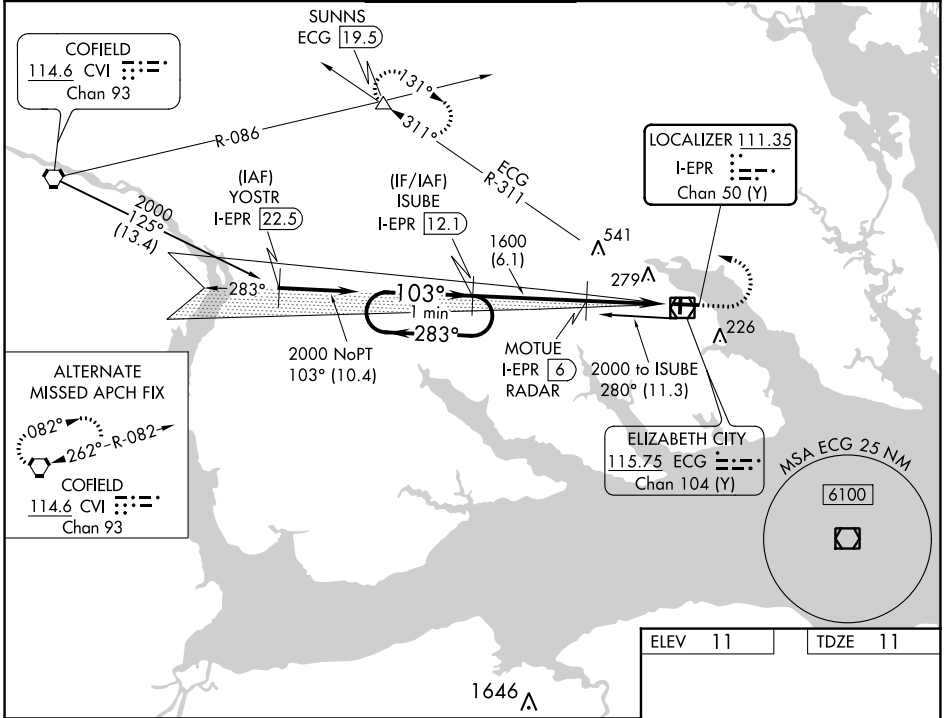


LOC/DME I-EPR <b>111.35</b> Chan <b>50 (Y)</b>	APP CRS <b>103°</b>	Rwy Idg <b>7219</b> TDZE <b>11</b> Apt Elev <b>11</b>
--	------------------------	---

# ILS or LOC RWY 10

ELIZABETH CITY CG AIR STATION/RGNL (ECG)

DME required.		SALS	MISSED APPROACH: Climb to 500 then climbing left turn to 3000 on heading 281° and ECG VOR/DME R-311 to SUNNS INT/ECG 19.5 DME and hold.	
ASOS <b>124.375</b>	NORFOLK APP CON <b>119.55 269.425</b>	ELIZABETH CITY TOWER ★ <b>120.5 (CTAF) 355.6</b>	GND CON <b>121.9</b>	UNICOM <b>122.95</b>

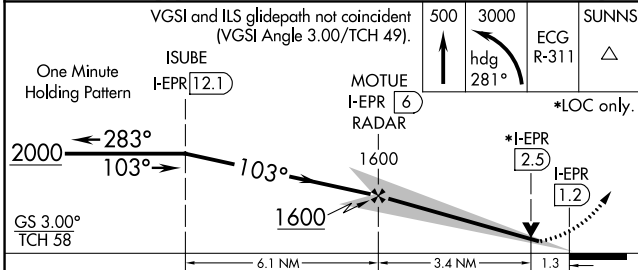


ALTERNATE MISSED APCH FIX

082°

262° R-082

COFIELD 114.6 CVI Chan 93



ELEV 11	TDZE 11
MRL Rwy 1-19 HIRL Rwy 10-28 REIL Rwys 10 and 28	
FAF to MAP 4.7 NM	
Knots	60 90 120 150 180
Min:Sec	4:42 3:08 2:21 1:53 1:34

CATEGORY	A	B	C	D
S-ILS 10	261-3/4		250 (300-3/4)	
S-LOC 10	460-1	449 (500-1)	460-1 3/8	449 (500-1 3/8)
CIRCLING	480-1	469 (500-1)	640-1 3/4	640-2
			629 (700-1 3/4)	629 (700-2)

SE-2, 31 OCT 2024 to 28 NOV 2024

SE-2, 31 OCT 2024 to 28 NOV 2024