

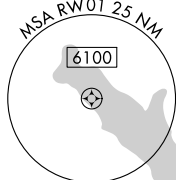
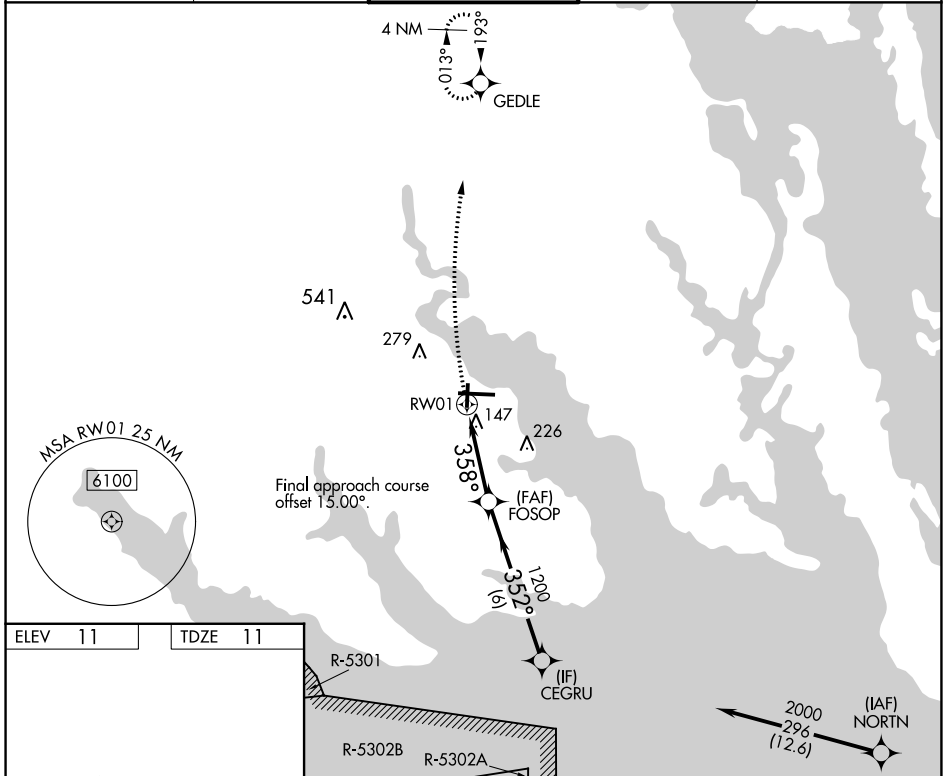
APP CRS	Rwy Idg	4219
358°	TDZE	11
	Apt Elev	11

RNAV (GPS) RWY 1

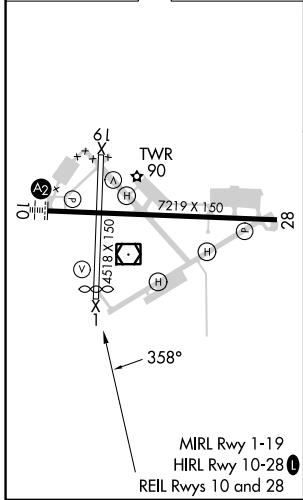
ELIZABETH CITY CG AIR STATION/RGNL (ECG)

RNP APCH.	<p>▽ Rwy 1 helicopter visibility reduction below $\frac{3}{4}$ SM NA. ATC clearance required to penetrate R-5302B. Procedure NA when tethered balloon located approximately 2 miles southeast airport is flying.</p>	MISSED APPROACH: Climbing right turn to 2100 direct GEDLE and hold.
-----------	--	---

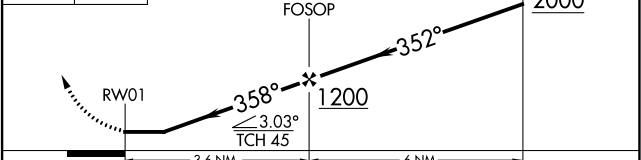
ASOS 124.375	NORFOLK APP CON 119.55 269.425	ELIZABETH CITY TOWER ★ 120.5 (CTAF) 355.6	GND CON 121.9	UNICOM 122.95
------------------------	--	---	-------------------------	-------------------------



ELEV 11	TDZE 11
---------	---------



2100 GEDLE VGS1 and descent angles not coincident (VGS1 Angle 2.75/TCH 25).



CATEGORY	A	B	C	D
INAV MDA	460-1	449 (500-1)	460- $\frac{13}{8}$	449 (500- $\frac{13}{8}$)
C CIRCLING	480-1	469 (500-1)	640- $\frac{13}{4}$ 629 (700- $\frac{13}{4}$)	640-2 629 (700-2)

SE-2, 31 OCT 2024 to 28 NOV 2024

SE-2, 31 OCT 2024 to 28 NOV 2024