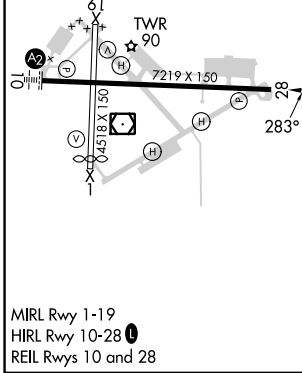
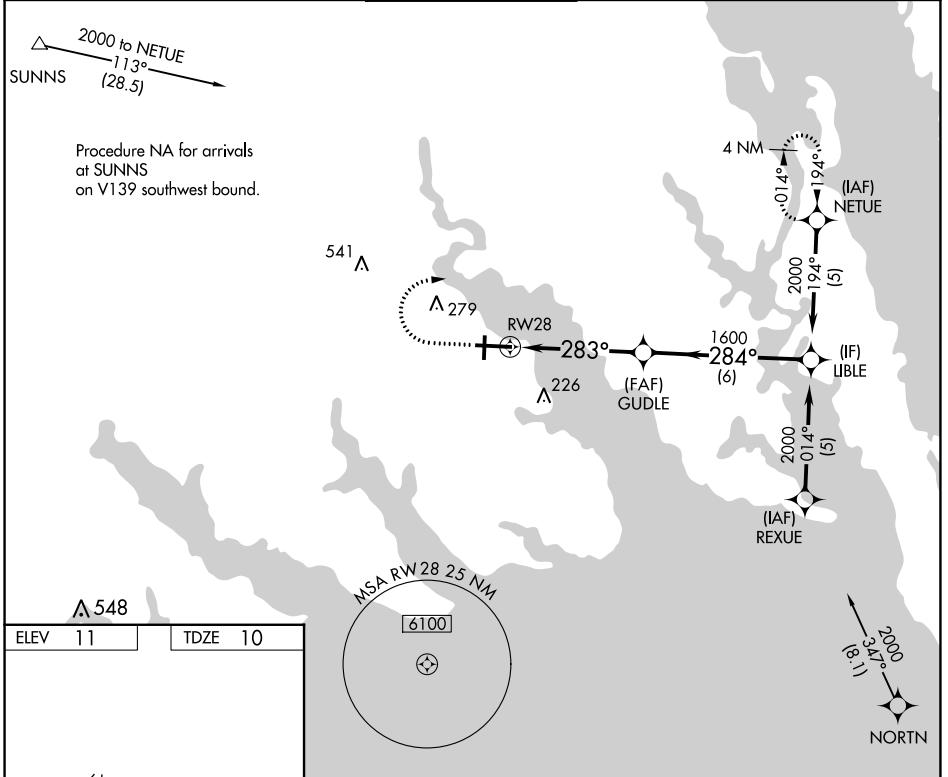


APP CRS	Rwy Idg	7219
283°	TDZE	10
	Apt Elev	11

RNAV (GPS) RWY 28

ELIZABETH CITY CG AIR STATION/RGNL (ECG)

RNP APCH.		<p>▼ Rwy 28 helicopter visibility reduction below $\frac{3}{4}$ SM NA. Procedure NA when tethered balloon located approximately 2 miles southeast of airport is flying.</p>		<p>MISSED APPROACH: Climb to 800 then climbing right turn to 2000 direct NETUE and hold.</p>	
ASOS	NORFOLK APP CON	ELIZABETH CITY TOWER★	GND CON	UNICOM	
124.375	119.55 269.425	120.5 (CTAF) 355.6	121.9	122.95	



ELEV	11	TDZE	10	
800	2000	NETUE		
<p>LIBLE 2000</p> <p>GUDLE 1600</p> <p>RWY 28 283°</p> <p>≤ 3.04° TCH 51</p> <p>4.8 NM 6 NM</p>				
CATEGORY	A	B	C	D
LNAV MDA	460-1	450 (500-1)	460-1 $\frac{3}{8}$	450 (500-1 $\frac{3}{8}$)
C CIRCLING	480-1	469 (500-1)	640-1 $\frac{3}{4}$ 629 (700-1 $\frac{3}{4}$)	640-2 629 (700-2)

SE-2, 31 OCT 2024 to 28 NOV 2024

SE-2, 31 OCT 2024 to 28 NOV 2024