

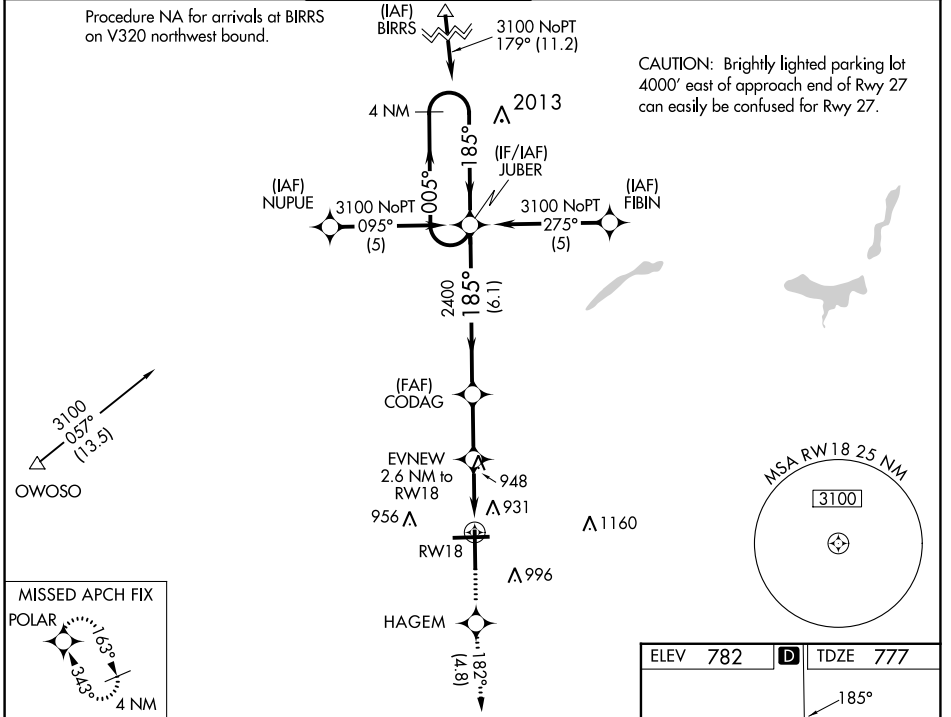
WAAS CH <b>99514</b> <b>W18A</b>	APP CRS <b>185°</b>	Rwy Idg TDZE <b>777</b> Apt Elev <b>782</b>	<b>7650</b>
--	------------------------	---	-------------

# RNAV (GPS) RWY 18

BISHOP INTL (F'NT)

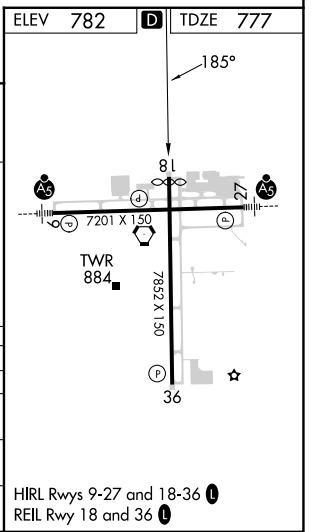
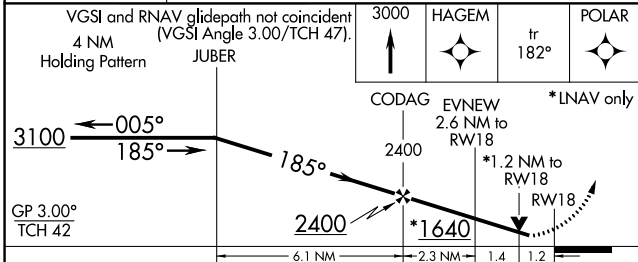
<b>⚠</b> For uncompensated Baro-VNAV systems, LNAV/VNAV NA below -16°C (4°F) or above 47°C (116°F). DME/DME RNP-0.3 NA. Rwy 18 helicopter visibility reduction below ¾ SM NA.	<b>MISSED APPROACH:</b> Climb to 3000 direct HAGEM and on track 182° to POLAR and hold.
---	---

ATIS <b>133.15</b>	GREAT LAKES APP CON * <b>118.8 257.9</b>	FLINT TOWER * <b>126.3 (CTAF) 257.9</b>	GND CON <b>121.9</b>	CLNC DEL <b>121.75</b>	UNICOM <b>122.95</b>
-----------------------	---	--	-------------------------	---------------------------	-------------------------



EC-1, 31 OCT 2024 to 28 NOV 2024

EC-1, 31 OCT 2024 to 28 NOV 2024



CATEGORY	A	B	C	D
LPV DA		1109-1¼	333 (400-1¼)	
LNAV/VNAV DA		1253-1¾	477 (500-1¾)	
LNAV MDA	1220-1	443 (500-1)	1220-1¾	443 (500-1¾)
CIRCLING	1300-1	518 (600-1)	1300-1½	1520-2¼ 738 (800-2¼)