

FORT SMITH, ARKANSAS

# HI-VOR Y or TACAN Y RWY 8

VORTAC FSM <b>110.4</b> Chan <b>41</b>	APCH CRS <b>053°</b>	Rwy Idg TDZE <b>469</b> Arprt Elev <b>469</b>
--	-------------------------	---

[USAF] FORT SMITH RGNL (EBBING FLD ANGB) (KFMS)

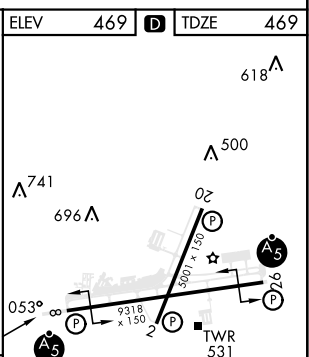
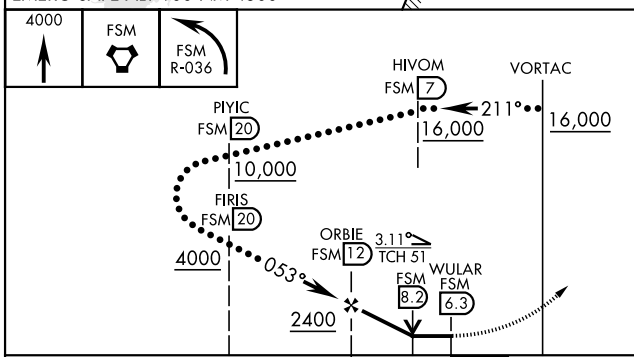
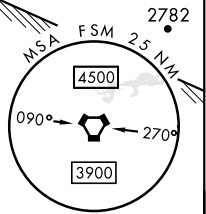
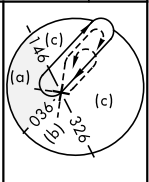
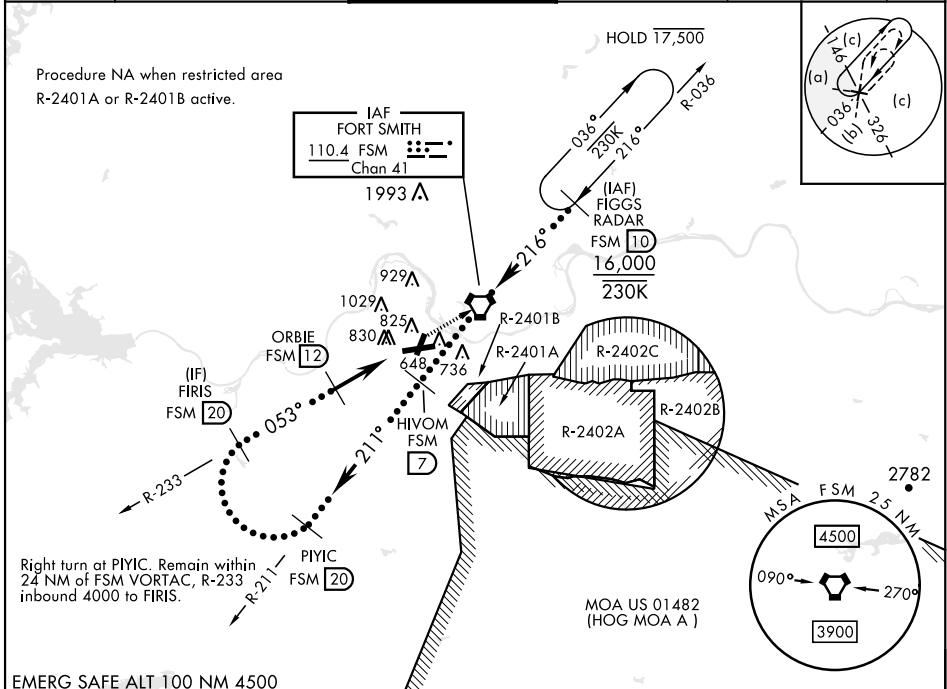
DME required



MISSED APPROACH: Climb to 4000 direct  
FSM VORTAC and on R-036 to FIGGS  
(FSM R-036/10 DME) and hold.

▼ \*Circling not authorized for CAT E NW of Rwy 8 and 20.  
Circling to Rwy 20 and Rwy 26 not authorized at night.

ATIS <b>124.775</b>	RAZORBACK APP CON * <b>120.9 343.75</b>	TOWER * <b>118.3 (CTAF) 323.175</b>	GND CON <b>121.9 275.8</b>	CLNC DEL <b>133.85 278.3</b>	ASR
------------------------	--	--	-------------------------------	---------------------------------	-----



CATEGORY	C	D	E
S-8	1120-1 $\frac{1}{8}$	651 (700-1 $\frac{1}{8}$ )	
CIRCLING*	1400-2 $\frac{3}{4}$ 931 (1000-2 $\frac{3}{4}$ )	1400-3	931 (1000-3)

ELEV	469	TDZE	469
HIRL Rwy 8-26	1	MIRL Rwy 2-20	1

FORT SMITH, ARKANSAS 35°20'N-94°22'W FORT SMITH RGNL (EBBING FLD ANGB) (KFMS)

Amdt 7C 21MAR24

# HI-VOR Y or TACAN Y RWY 8

SC-1, 31 OCT 2024 to 28 NOV 2024

SC-1, 31 OCT 2024 to 28 NOV 2024