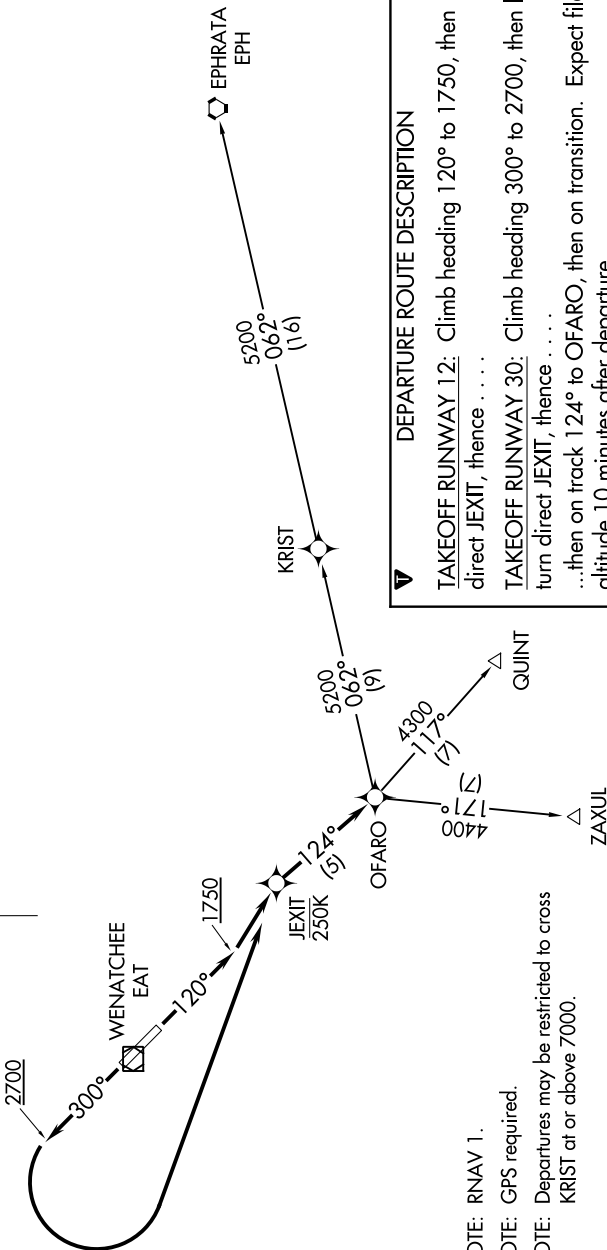


NW-1, 31 OCT 2024 to 28 NOV 2024

(NOTES CONTINUED ON FOLLOWING PAGE)

SEATTLE CENTER
126.1
UNICOM
123.0
ASOS
119.925



**TOP ALTITUDE:
ASSIGNED BY ATC**

DEPARTURE ROUTE DESCRIPTION

TAKEOFF RUNWAY 12: Climb heading 120° to 1750, then direct JEXIT, thence

TAKEOFF RUNWAY 30: Climb heading 300° to 2700, then left turn direct JEXIT, thence

...then on track 124° to OFARO, then on transition. Expect filed altitude 10 minutes after departure.

- EPHRATA TRANSITION (OFARO2.EPH)
- QUINT TRANSITION (OFARO2.QUINT)
- ZAXUL TRANSITION (OFARO2.ZAXUL)

NOTE: RNAV 1.
NOTE: GPS required.
NOTE: Departures may be restricted to cross KRIST at or above 7000.

TAKEOFF MINIMUMS
Rwy 12: Standard with minimum climb of 550' per NM to 3200.
Rwy 30: Standard with minimum climb of 500' per NM to 4000.

NOTE: Chart not to scale.

NW-1, 31 OCT 2024 to 28 NOV 2024