

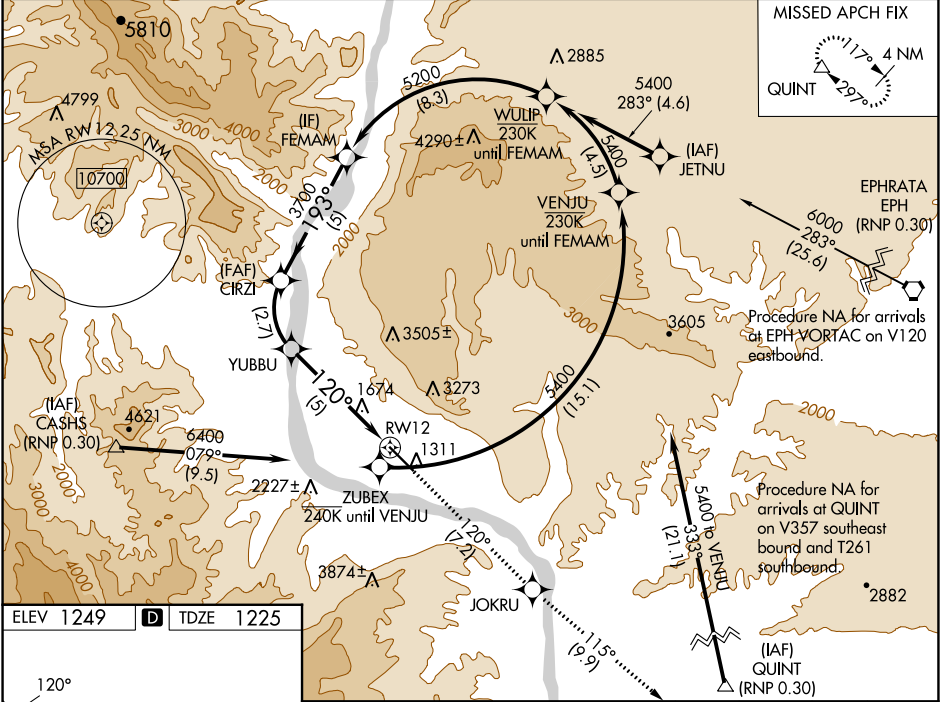
APP CRS	Rwy Idg	7000
120°	TDZE	1225
	Apt Elev	1249

RNAV (RNP) RWY 12

PANGBORN MEML (EAT)

<p>For uncompensated Baro-VNAV systems, procedure NA below -10°C (14°F) or above 54°C (130°F). RF required. GPS required. FD or HUD required.</p>	<p>MALS R</p>	<p>MISSED APPROACH: Climb to 5400 on track 120° to JOKRU and on track 115° to QUINT and hold.</p> <p>* Missed approach requires a minimum climb of 319 feet per NM to 3700. # Missed approach requires a minimum climb of 295 feet per NM to 3700.</p>

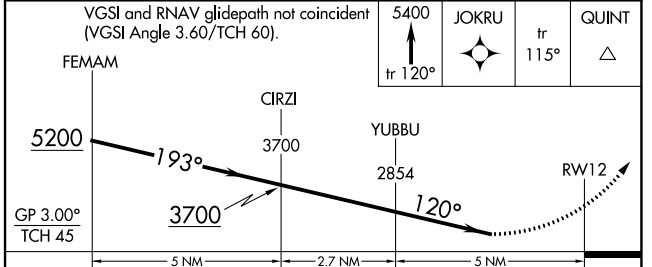
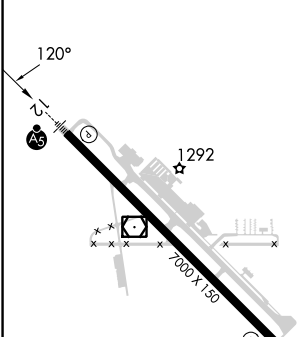
ASOS 119.925	SEATTLE CENTER 126.1	UNICOM 123.0 (CTAF) 0
------------------------	--------------------------------	---------------------------------



NW-1, 31 OCT 2024 to 28 NOV 2024

NW-1, 31 OCT 2024 to 28 NOV 2024

ELEV 1249	D	TDZE 1225
-----------	----------	-----------



CATEGORY	A	B	C	D
RNP 0.15 DA*		1995-3	770 (800-3)	
RNP 0.19 DA#		2072-3	847 (900-3)	
RNP 0.30 DA		2417-5	1192 (1200-5)	

AUTHORIZATION REQUIRED