

(ORNEY1.LHO) 23334

ORNEY ONE DEPARTURE (OBSTACLE)

AL-663 (FAA)

LOGAN-CACHE (LGTU)

LOGAN, UTAH

SALT LAKE CENTER
127.7 354.125

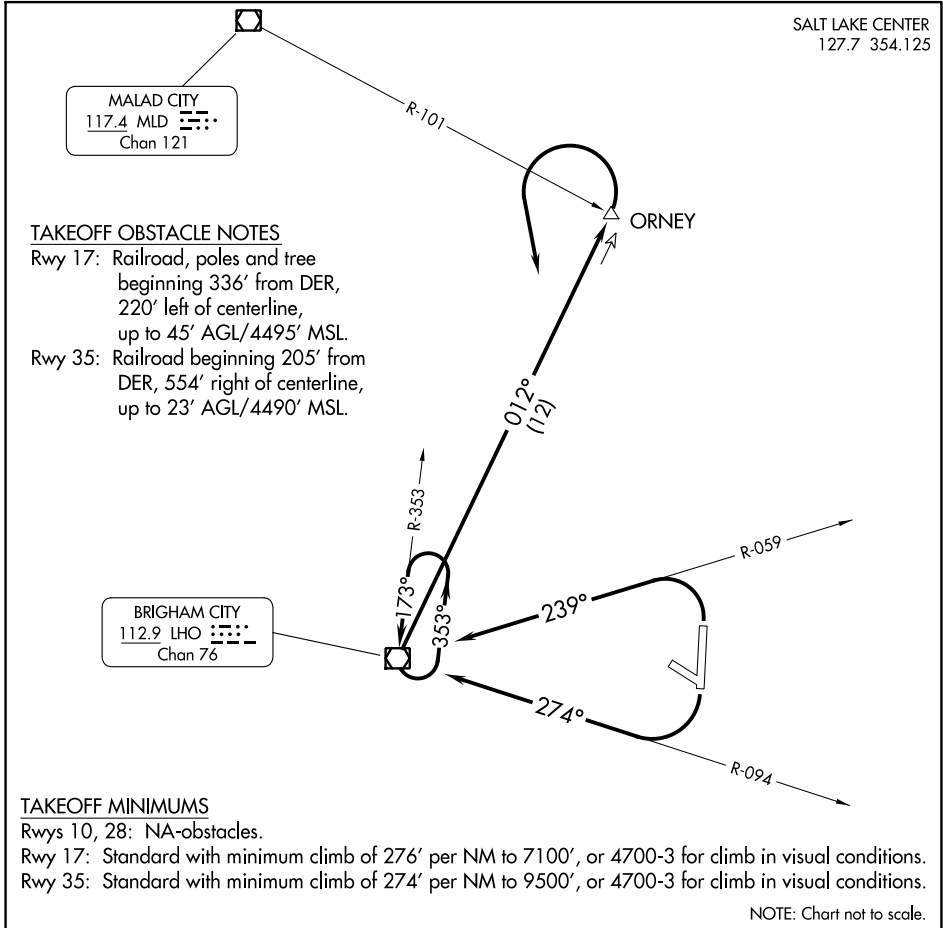
MALAD CITY
117.4 MLD
Chan 121

TAKEOFF OBSTACLE NOTES

Rwy 17: Railroad, poles and tree beginning 336' from DER, 220' left of centerline, up to 45' AGL/4495' MSL.

Rwy 35: Railroad beginning 205' from DER, 554' right of centerline, up to 23' AGL/4490' MSL.

BRIGHAM CITY
112.9 LHO
Chan 76



TAKEOFF MINIMUMS

Rwys 10, 28: NA-obstacles.

Rwy 17: Standard with minimum climb of 276' per NM to 7100', or 4700-3 for climb in visual conditions.

Rwy 35: Standard with minimum climb of 274' per NM to 9500', or 4700-3 for climb in visual conditions.

NOTE: Chart not to scale.

DEPARTURE ROUTE DESCRIPTION

TAKEOFF RUNWAY 17: Climbing right turn to 12000 via LHO VOR/DME R-094 to LHO VOR/DME and right turn via LHO R-012 to ORNEY INT/LHO 12 DME and left turn via LHO R-012 to LHO VOR/DME, thence . . . or for climb in visual conditions, cross Logan-Cache Airport at or above 9000, climb to 12000 via LHO R-077 to LHO VOR/DME, thence . . .

TAKEOFF RUNWAY 35: Climbing left turn to 12000 via LHO VOR/DME R-059 to LHO VOR/DME and right turn via LHO R-012 to ORNEY INT/LHO 12 DME and left turn via LHO R-012 to LHO VOR/DME, thence . . . or for climb in visual conditions, cross Logan-Cache Airport at or above 9000, climb to 12000 via LHO R-077 to LHO VOR/DME, thence . . .

. . . continue climbing in LHO VOR/DME holding pattern to 12000 before proceeding on course.

ORNEY ONE DEPARTURE (OBSTACLE)

(ORNEY1.LHO) 17DEC09

LOGAN, UTAH
LOGAN-CACHE (LGTU)

SW-4, 31 OCT 2024 to 28 NOV 2024

SW-4, 31 OCT 2024 to 28 NOV 2024