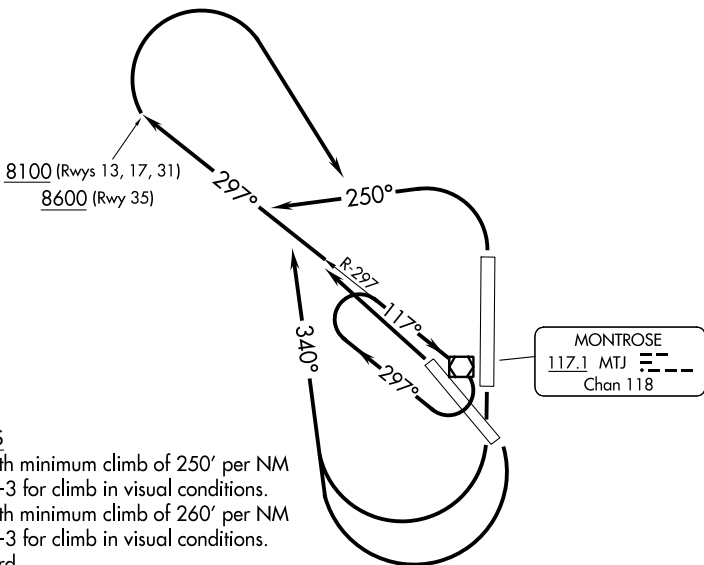


DENVER CENTER
127.1 343.65
UNICOM
122.8



TAKEOFF MINIMUMS

- Rwy 13: Standard with minimum climb of 250' per NM to 8100, or 5000-3 for climb in visual conditions.
- Rwy 17: Standard with minimum climb of 260' per NM to 8100, or 5000-3 for climb in visual conditions.
- Rwys 31, 35: Standard.

TAKEOFF OBSTACLE NOTES

- Rwy 13: Multiple trees beginning 776' from DER, 273' left of centerline, up to 50' AGL/5878' MSL. Multiple trees and towers beginning 2590' from DER, 38' right of centerline, up to 110' AGL/5910' MSL.
- Rwy 17: Road with vehicle beginning 12' from DER, 258' left of centerline up to 15' AGL/5748' MSL. Multiple trees beginning 134', from DER, 436' left of centerline, up to 25' AGL/5745' MSL. Sign 23' from DER, 307' right of centerline, 16' AGL/5736' MSL.
- Rwy 31: Multiple trees beginning 315' from DER, 378' left of centerline, up to 50' AGL/5749' MSL.
- Rwy 35: Multiple trees beginning 218' from DER, 511' left of centerline, up to 50' AGL/5709' MSL.

NOTE: Chart not to scale.

DEPARTURE ROUTE DESCRIPTION

TAKEOFF RUNWAYS 13, 17: Climbing right turn to 8100 via heading 340° and MTJ R-297, then climbing right turn to 11000 direct MTJ VOR/DME, Thence . . .
Or, for climb in visual conditions: Cross Montrose Rgnl Airport at or above 10600 before proceeding on course. When executing VCOA, notify ATC prior to departure.

TAKEOFF RUNWAY 31: Climbing left turn to 8100 via MTJ R-297, then climbing right turn to 11000 direct MTJ VOR/DME, Thence . . .

TAKEOFF RUNWAY 35: Climbing left turn to 8600 via heading 250° and MTJ R-297, then climbing right turn to 11000 direct MTJ VOR/DME, Thence . . .

. . . Continue climb-in-hold in MTJ VOR/DME holding pattern to cross MTJ VOR/DME at or above 11000, then proceed via assigned route.

SW-1, 31 OCT 2024 to 28 NOV 2024

SW-1, 31 OCT 2024 to 28 NOV 2024