


WAAS CH 40411 W17A	APP CRS 168°	Rwy Idg TDZE Apt Elev	10000 5708 5759
--	------------------------	-----------------------------	--

RNAV (GPS) RWY 17

MONTROSE RGNL (MTJ)

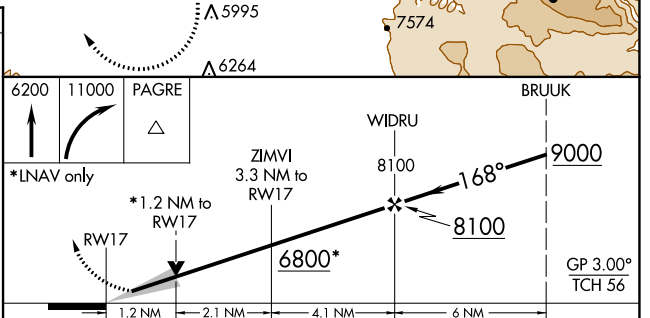
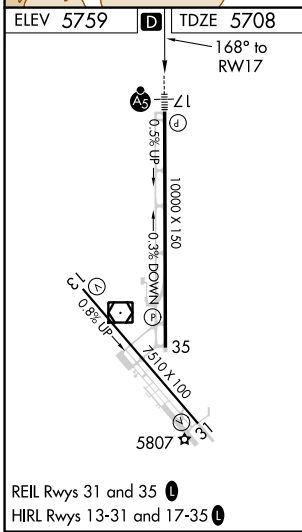
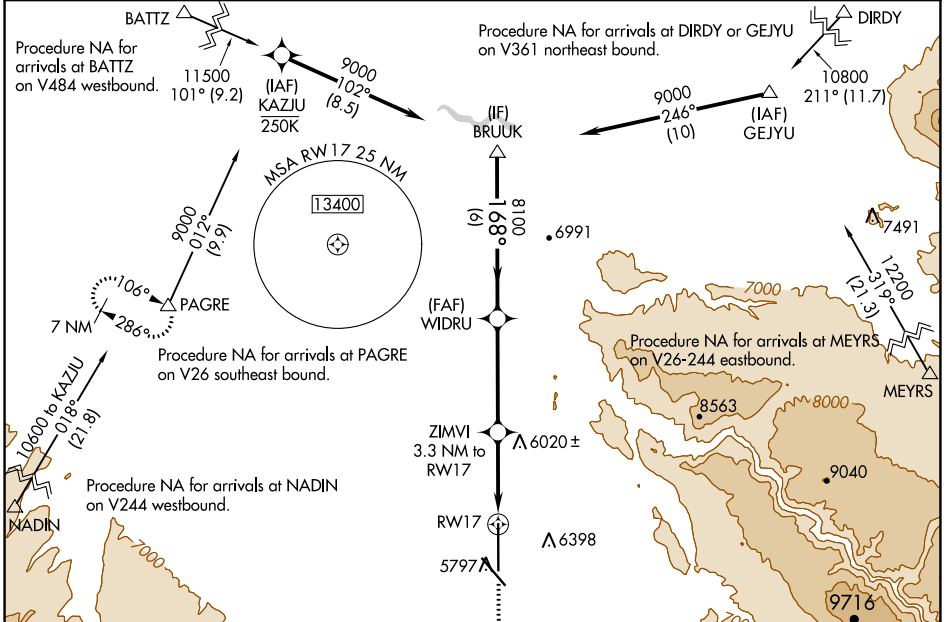
RNP APCH.


⚠ Circling NA east of Rwy 17 and northeast of Rwy 31. Circling Rwy 31 NA at night. When Circling to Rwy 13 at night, operational VGSI required, remain on or above VGSI glidepath until threshold. Baro-VNAV NA. For inop ALS, increase LNAV Cat C/D visibility to 1 1/2 SM.

MALSR 

MISSED APPROACH: (Do not exceed 250K until PAGRE) Climb to 6200 then climbing right turn to 11000 direct PAGRE and hold, continue climb in hold to 11000.

ASOS 135.225	DENVER CENTER 127.1 343.65	UNICOM 122.8 (CTAF)
------------------------	--------------------------------------	-------------------------------



CATEGORY	A	B	C	D
LPV DA		5908-1/2	200 (200-1/2)	
LNAV/VNAV DA		6131-3/4	423 (400-3/4)	
LNAV MDA	6120-1/2	412 (400-1/2)	6120-3/4	412 (400-3/4)
 CIRCLING	6280-1 521 (600-1)	6320-1 561 (600-1)	6380-1 3/4 621 (700-1 3/4)	6800-3 1041 (1100-3)

SW-1, 31 OCT 2024 to 28 NOV 2024

SW-1, 31 OCT 2024 to 28 NOV 2024