

VOR/DME EWN <b>113.6</b> Chan <b>83</b>	APP CRS <b>226°</b>	Rwy Idg <b>6153</b> TDZE <b>17</b> Apt Elev <b>18</b>
---	------------------------	---

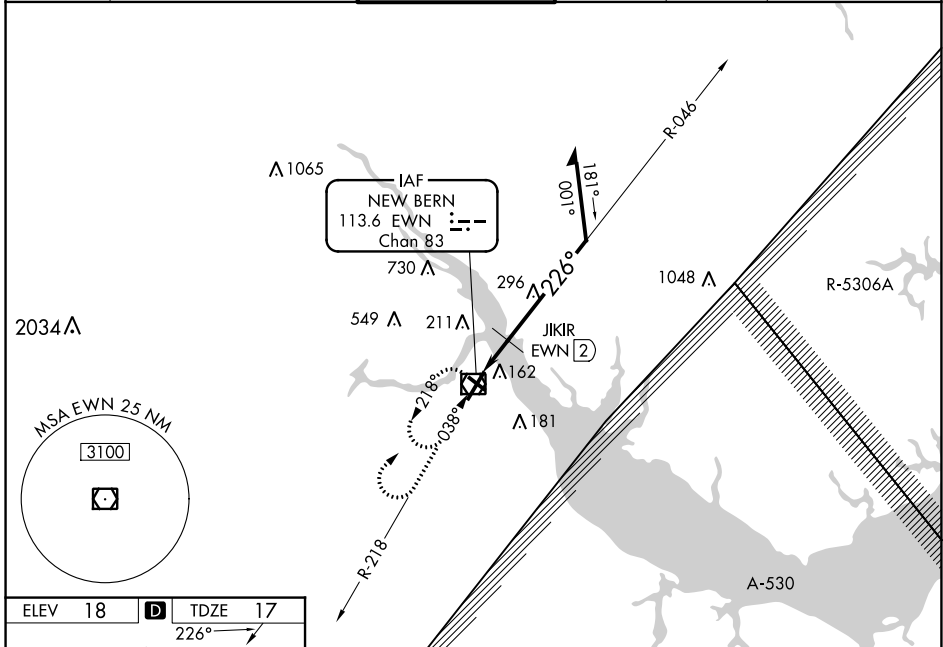
# VOR RWY 22

COASTAL CAROLINA RGNL (EWN)

**⚠** Rwy 14, 32 helicopter visibility reduction below 1 SM NA. Rwy 22 helicopter visibility reduction below 3/4 SM NA. Circling Rwy 14, 32 NA at night. JIKIR fix minimums:  
**⚠** S-22 Cat D minimums NA when using Cherry Point altimeter setting. When local altimeter setting not received, use Cherry Point altimeter setting and increase all MDA's 40 feet and Circling Cat D visibility 1/4 SM and JIKIR fix minimums Circling Cat C/D visibility 1/4 SM.

MISSED APPROACH: Climb to 1000 then climbing right turn to 2000 direct EWN VOR/ DME and hold, continue climb-in-hold to 2000.

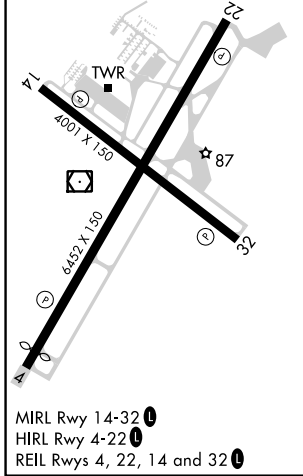
ASOS <b>118.525</b>	CHERRY POINT APP CON <b>119.35 374.9</b>	NEW BERN TOWER ★ <b>124.25</b> (CTAF) <b>0</b>	GND CON <b>121.7</b>	CLNC DEL <b>121.7</b>	CLNC DEL <b>120.525</b> (when twr closed)
------------------------	---	---	-------------------------	--------------------------	---



SE-2, 31 OCT 2024 to 28 NOV 2024

SE-2, 31 OCT 2024 to 28 NOV 2024

ELEV <b>18</b>	<b>D</b>	TDZE <b>17</b>
----------------	----------	----------------



1000	2000	EWN	EWN VOR/DME	Remain within 10 NM
VGSI and descent angles not coincident (VGSI Angle 3.00/TCH 31).		*640 when using Cherry Point altimeter setting.	6000 1800 600*	046° 226°

JKIR EWN 2

3.42° TCH 55

2 NM

CATEGORY	A	B	C	D
S-22	600-1	583 (600-1)	600-1 3/4	583 (600-1 3/4)
<b>C</b> CIRCLING	600-1	582 (600-1)	600-1 3/4 582 (600-1 3/4)	860-2 3/4 842 (900-2 3/4)
JKIR FIX MINIMUMS (DME REQUIRED)				
S-22	480-1	463 (500-1)	480-1 3/8	463 (500-1 3/8)
<b>C</b> CIRCLING	480-1 462 (500-1)	520-1 502 (600-1)	600-1 1/2 582 (600-1 1/2)	860-2 3/4 842 (900-2 3/4)