

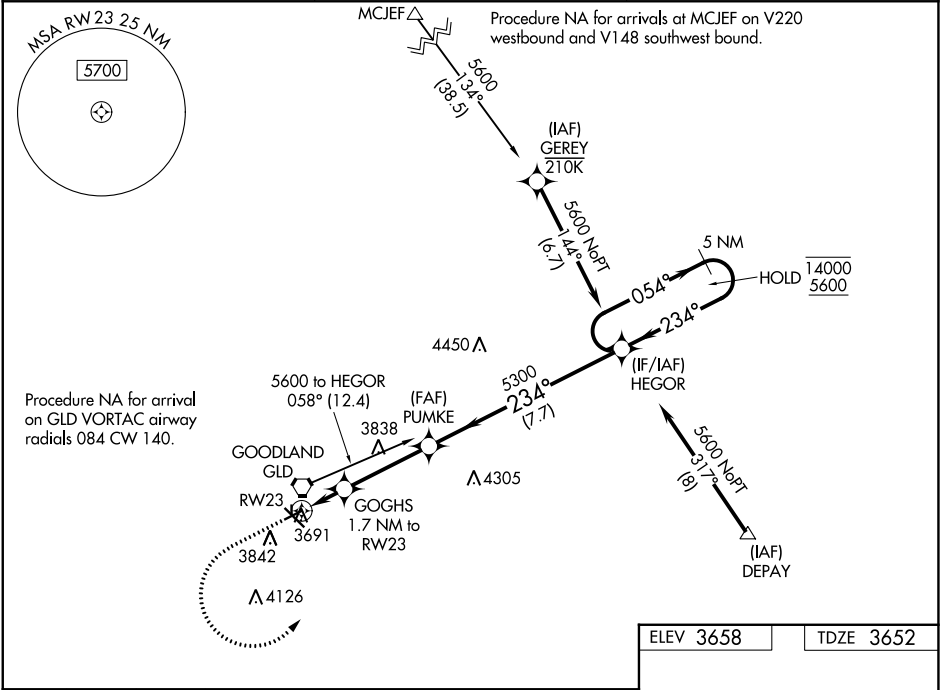
WAAS CH 70644 W23A	APP CRS 234°	Rwy Idg TDZE Apt Elev	4001 3652 3658
--	------------------------	-----------------------------	---

RNAV (GPS) RWY 23

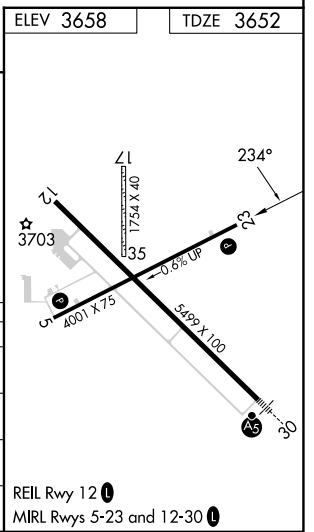
RENNER FLD/GOODLAND MUNI (GLD)

RNP APCH - GPS.	MISSED APPROACH: Climb to 4200 then climbing left turn to 5600 direct HEGOR and hold.
-----------------	---

ASOS 121.025	DENVER CENTER 132.7 226.675	UNICOM 122.8 (CTAF) 0
------------------------	---------------------------------------	---------------------------------



4200	5600	HEGOR		
<p>HEGOR 5 NM Holding Pattern</p> <p>GOGHS 1.7 NM to RW23</p> <p>5300 \rightarrow 054° \rightarrow $\overline{14000}$ $\overline{5600}$</p> <p>234° \nwarrow \leftarrow 234°</p> <p>RW23 1.1 NM to RW23</p> <p>4220</p> <p>5300</p> <p>GP 3.00° TCH 42</p>				
1.1 NM	0.6 NM	3.4 NM	7.7 NM	
CATEGORY	A	B	C	D
LPV DA	3902-1	250 (300-1)		NA
LNAV/VNAV DA	3939-1	287 (300-1)		NA
LNAV MDA	4040-1	388 (400-1)	4040-1 $\frac{1}{8}$ 388 (400-1 $\frac{1}{8}$)	NA
CIRCLING	4080-1 422 (500-1)	4120-1 462 (500-1)	4120-1 $\frac{1}{2}$ 462 (500-1 $\frac{1}{2}$)	NA



NC-2, 31 OCT 2024 to 28 NOV 2024

NC-2, 31 OCT 2024 to 28 NOV 2024