


VORTAC GLD 115.1 Chan 98	APP CRS 332°	Rwy Idg 5499 TDZE 3654 Apt Elev 3657
--	------------------------	---

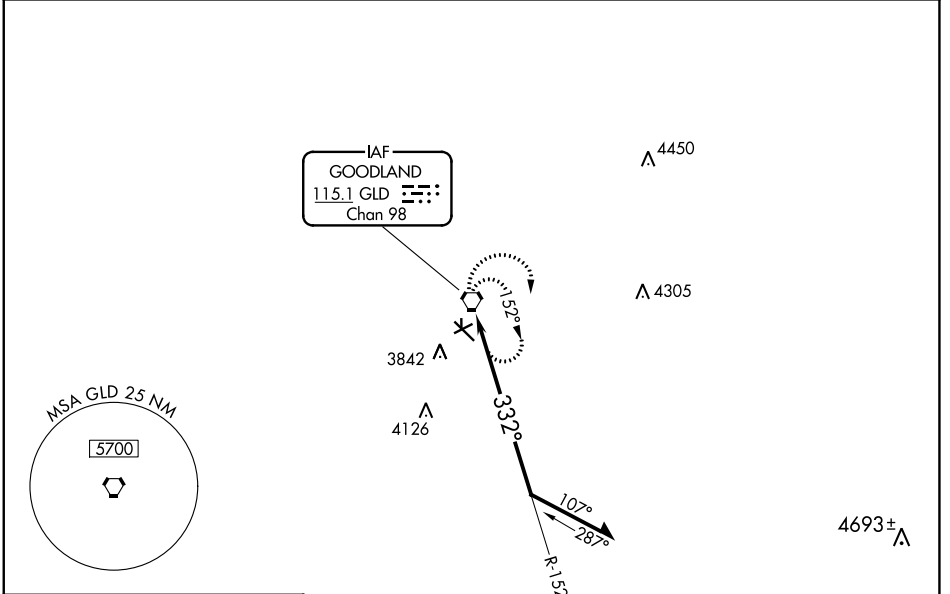
VOR RWY 30

RENNER FLD/GOODLAND MUNI (G.LD)

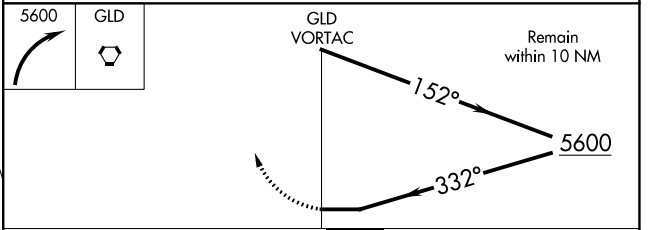
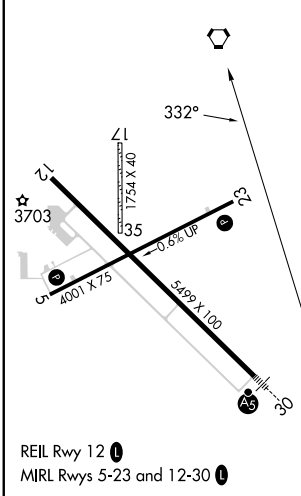
⚠ Inoperative table does not apply to S-30 Cat C/D. Circling NA south of Rwy 5 and 30. When local altimeter setting not received, use Burlington, CO altimeter setting and increase all MDA 160 feet; increase S-30 Cat C/D visibilities to 2 miles, Circling Cat C visibility to 2 miles and Circling Cat D visibility to 2 1/4 miles. Circling Rwy 5, 23 NA at night. Circling NA to Rwys 17 and 35.

MALS  MISSED APPROACH: Climbing right turn to 5600 in GLD VORTAC holding pattern.

ASOS 121.025	DENVER CENTER 132.7 226.675	UNICOM 122.8 (CTAF) 0
------------------------	---------------------------------------	--



ELEV 3657	TDZE 3654
-----------	-----------



CATEGORY	A	B	C	D
S-30	4200-1/2	546 (600-1/2)	4200-1 5/8	546 (600-1 5/8)
C CIRCLING	4200-1	543 (600-1)	4200-1 5/8 543 (600-1 5/8)	4240-2 583 (600-2)

NC-2, 31 OCT 2024 to 28 NOV 2024

NC-2, 31 OCT 2024 to 28 NOV 2024