

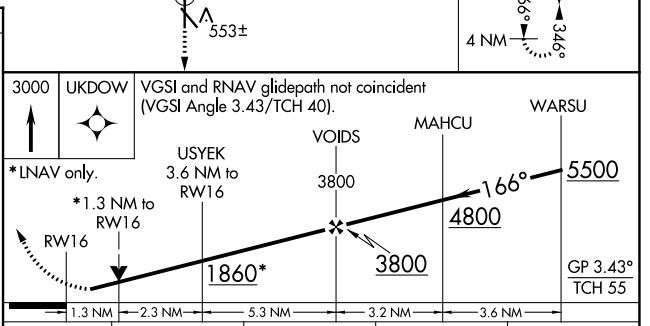
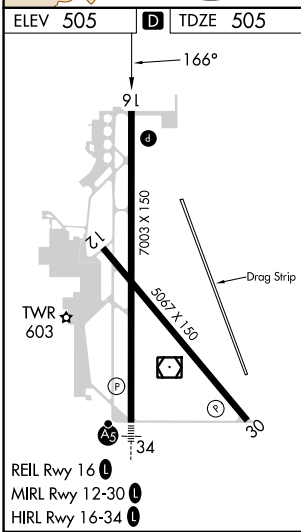
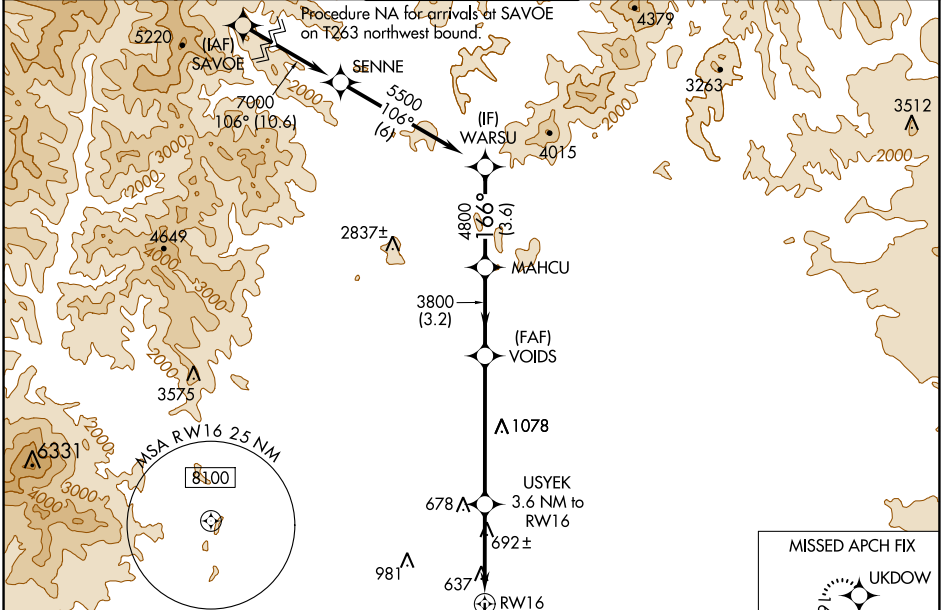
WAAS CH <b>86443</b> <b>W16A</b>	APP CRS <b>166°</b>	Rwy Idg <b>7003</b> TDZE <b>505</b> Apt Elev <b>505</b>
--	------------------------	---

# RNAV (GPS) RWY 16

REDDING RGNL (RDD)

RNP APCH.	MISSED APPROACH: Climb to 3000 direct UKDOW and hold.
<p>▼ Rwy 16 helicopter visibility reduction below 3/4 SM NA.</p> <p>▲ For uncompensated Baro-VNAV systems, LNAV/VNAV NA below -4°C or above 53°C.</p>	

ATIS <b>124.1</b>	OAKLAND CENTER <b>132.2 350.3</b>	REDDING TOWER * <b>119.8 (CTAF) 269.25</b>	GND CON <b>121.7</b>	UNICOM <b>122.95</b>
----------------------	--------------------------------------	---	-------------------------	-------------------------



CATEGORY	A	B	C	D
LPV DA	755-3/4	250 (300-3/4)	775-7/8	270 (300-7/8)
LNAV/VNAV DA	892-1 1/8 387 (400-1 1/8)			
LNAV MDA	960-1	455 (500-1)	960-1 3/8	455 (500-1 1/8)
CIRCLING	960-1 455 (500-1)	1000-1 495 (500-1)	1120-1 3/4 615 (700-1 3/4)	1340-2 3/4 835 (900-2 3/4)

SW-2, 31 OCT 2024 to 28 NOV 2024

SW-2, 31 OCT 2024 to 28 NOV 2024