

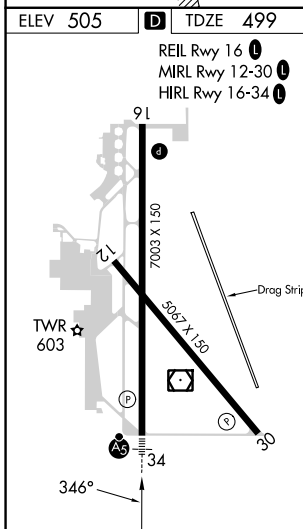
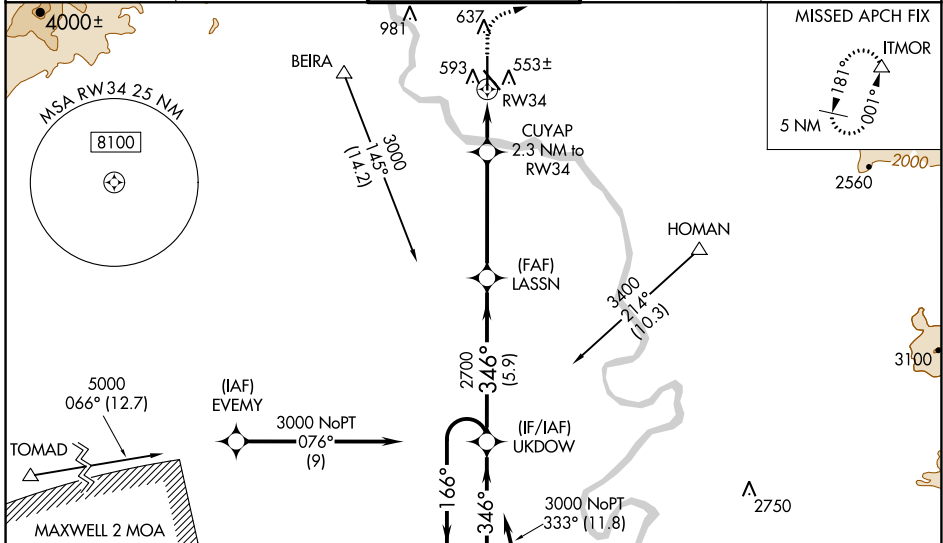
WAAS CH <b>56402</b> <b>W34A</b>	APP CRS <b>346°</b>	Rwy Idg <b>7003</b> TDZE <b>499</b> Apt Elev <b>505</b>
-------------------------------------	---------------------	---

# RNAV (GPS) RWY 34

REDDING RGNL (RDD)

RNP APCH.	MALSRS	MISSED APPROACH: Climb to 1700 then climbing right turn to 5000 direct ITMOR, continue climb-in-hold to 5000.
<p><b>⚠</b> For uncompensated Baro-VNAV systems, LNAV/VNAV NA below -4°C or above 54°C. For inop ALS, increase LNAV/VNAV all Cats visibility to ¾ SM and LNAV Cat C, D visibility to 1 SM.</p>		

ATIS <b>124.1</b>	OAKLAND CENTER <b>132.2 350.3</b>	<b>REDDING TOWER * 119.8(CTAF) 0 269.25</b>	GND CON <b>121.7</b>	UNICOM <b>122.95</b>
-------------------	-----------------------------------	---	----------------------	----------------------



VGSI and RNAV glidepath not coincident (VGSI Angle 3.00/TCH 55).		1700	5000	ITMOR
4 NM Holding Pattern				
UKDOW		LASSN	CUYAP	*LNAV only.
6000 ← 166° → 3000		2700	2.3 NM to RW34	*1 NM to RW34
GP 3.00° TCH 52		2700	*1260	
		5.9 NM	4.5 NM	1.3 NM
CATEGORY	A	B	C	D
LPV DA		699-½	200 (200-½)	
LNAV/VNAV DA		754-½	255 (300-½)	
LNAV MDA	860-½	361 (400-½)	860-⅝	361 (400-⅝)
CIRCLING	940-1 435 (500-1)	1000-1 495 (500-1)	1120-1¾ 615 (700-1¾)	1340-2¾ 835 (900-2¾)

SW-2, 31 OCT 2024 to 28 NOV 2024

SW-2, 31 OCT 2024 to 28 NOV 2024