

WAAS CH <b>93644</b> <b>W15A</b>	APP CRS <b>155°</b>	Rwy Idg TDZE Apt Elev	<b>4423</b> <b>617</b> <b>617</b>
--	------------------------	-----------------------------	---

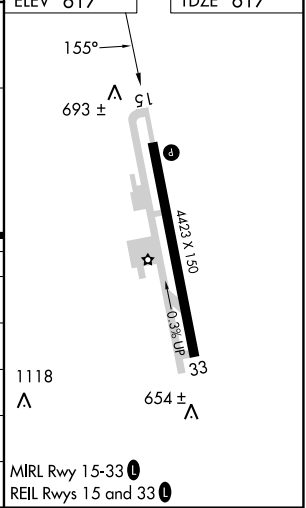
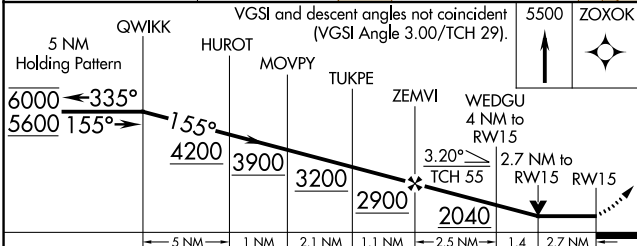
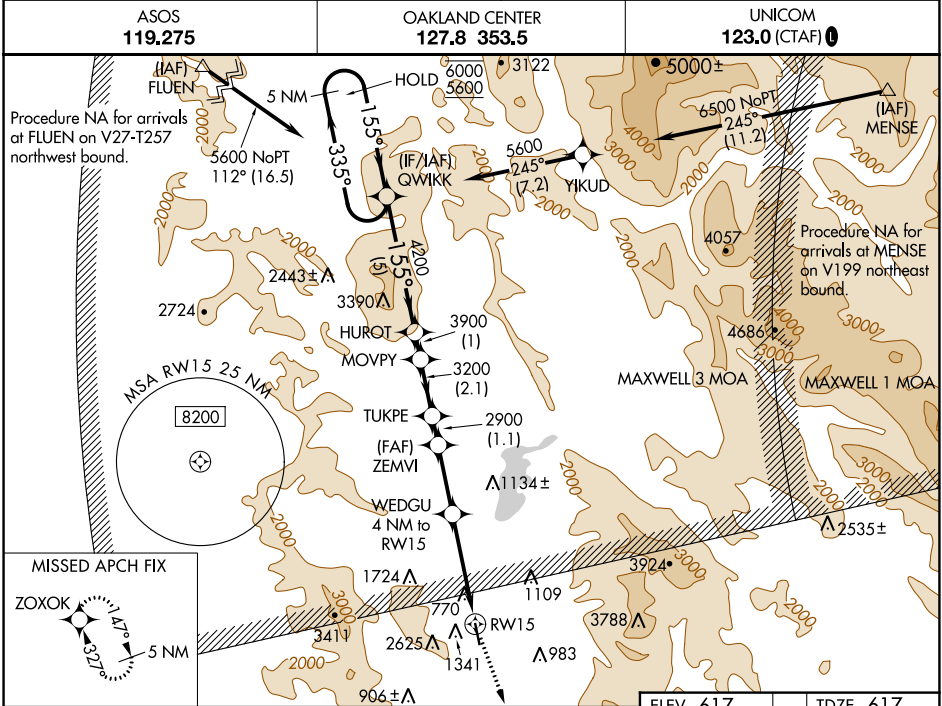
# RNAV (GPS) RWY 15

UKIAH MUNI (UKI)

RNP APCH - GPS.

**⚠** Circling NA southwest of Rwy 15-33. Circling Rwy 33 NA at night. Rwy 15 helicopter visibility reduction below 3/4 SM NA. When local altimeter setting not received, procedure NA.

**⚠** MISSED APPROACH: Climb to 5500 direct ZOXOK and hold, continue climb-in-hold to 5500.  
\*Missed approach requires minimum climb of 350 feet per NM to 3300.



CATEGORY	A	B	C	D
LP MDA*	1500-1¼ 883 (900-1¼)	1540-1¼ 923 (1000-1¼)	1560-2½ 943 (1000-2½)	1580-3 963 (1000-3)
LP MDA	2120-1¼ 1503 (1600-1¼)	2120-1½ 1503 (1600-1½)	2120-3	1503 (1600-3)
LNAV MDA*	1960-1¼ 1343 (1400-1¼)	1960-1½ 1343 (1400-1½)	1960-3	1343 (1400-3)
LNAV MDA	2220-1¼ 1603 (1700-1¼)	2220-1½ 1603 (1700-1½)	2220-3	1603 (1700-3)
<b>C</b> CIRCLING	2220-1¼ 1603 (1700-1¼)	2220-1½ 1603 (1700-1½)	2220-3 1603 (1700-3)	2780-3 2163 (2200-3)

SW-2, 31 OCT 2024 to 28 NOV 2024

SW-2, 31 OCT 2024 to 28 NOV 2024