

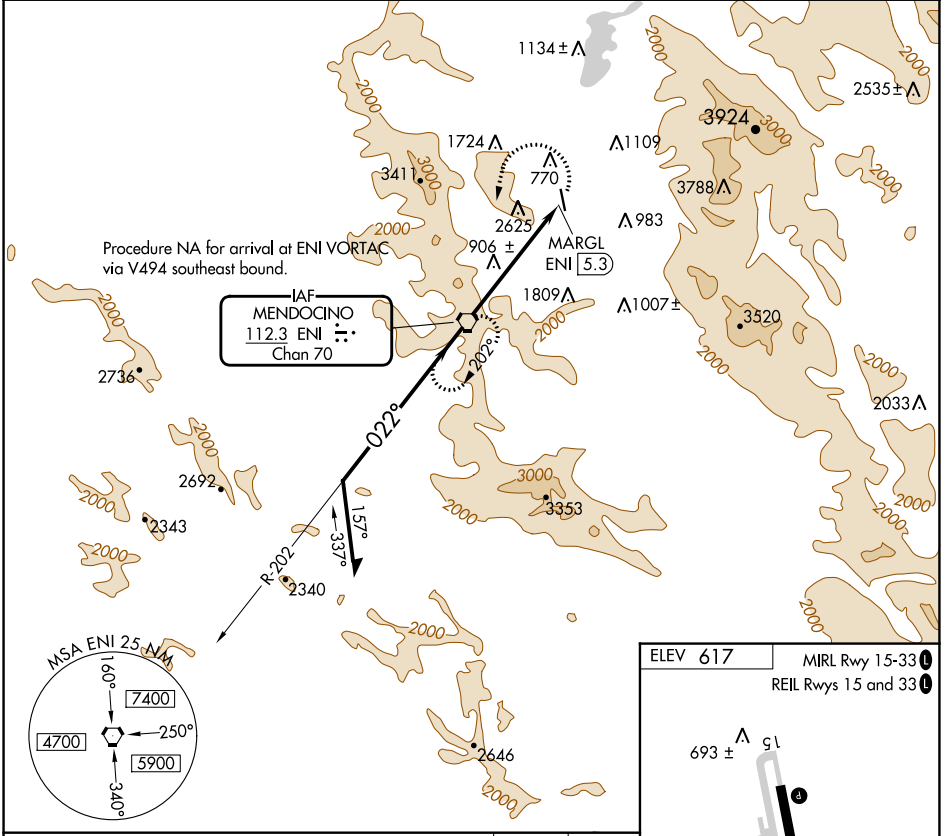
VORTAC ENI 112.3 Chan 70	APP CRS 022°	Rwy Idg TDZE Apt Elev N/A N/A 617
---------------------------------------	------------------------	---

VOR-A
UKIAH MUNI (UKI)

⚠ Circling NA west of Rwy 15-33.
When local altimeter setting not received, procedure NA.

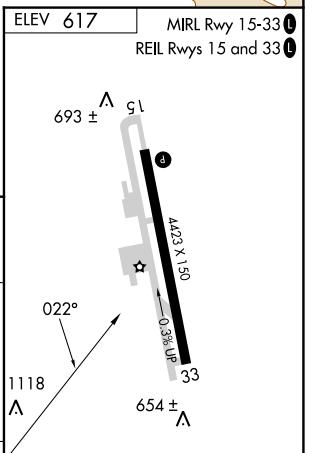
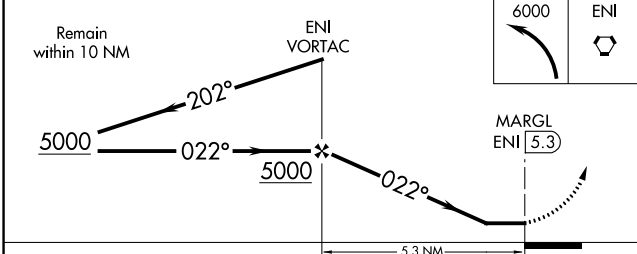
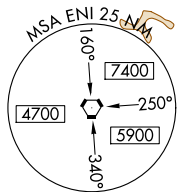
MISSED APPROACH: Climbing left turn to 6000 direct ENI VORTAC and hold, continue climb-in-hold to 6000.

ASOS 119.275	OAKLAND CENTER 127.8 353.5	UNICOM 123.0 (CTAF) Ⓛ
------------------------	--------------------------------------	--



SW-2, 31 OCT 2024 to 28 NOV 2024

SW-2, 31 OCT 2024 to 28 NOV 2024



CATEGORY	A	B	C	D	FAF to MAP 5.3 NM					
CIRCLING	3400-1¼ 2783 (2800-1¼)	3400-1½ 2783 (2800-1½)	3400-3	2783 (2800-3)	Knots	60	90	120	150	180
					Min:Sec	5:18	3:32	2:39	2:07	1:46