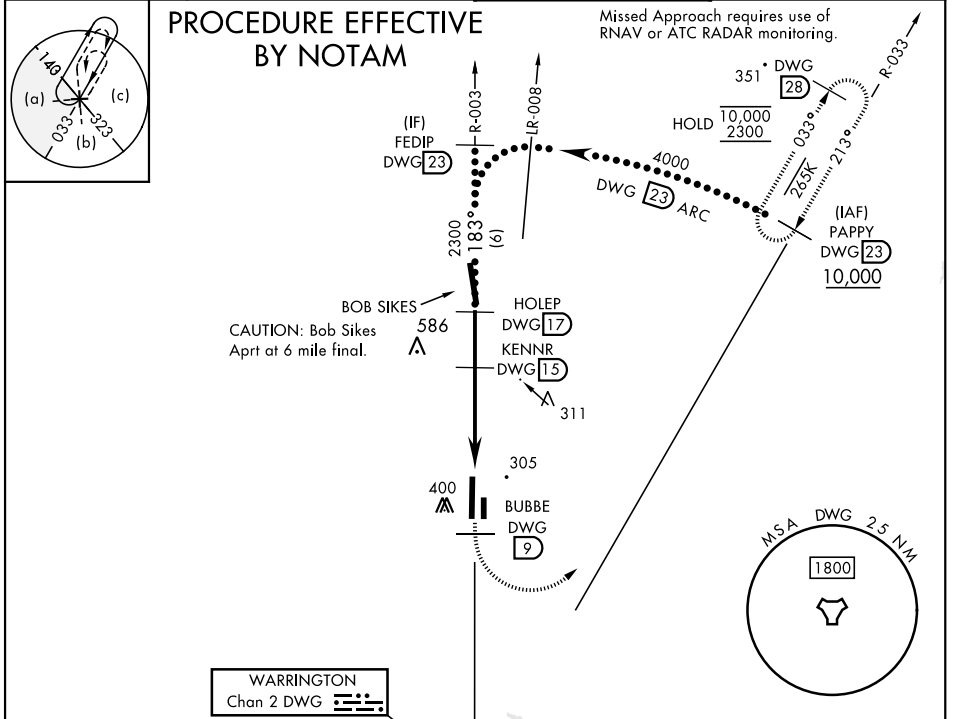


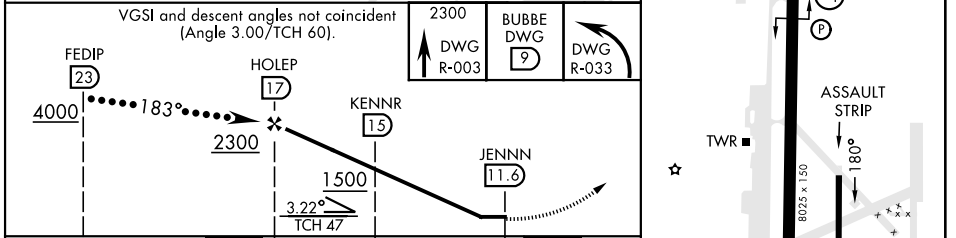
# HI-TACAN Y RWY 18

TACAN DWG Chan <b>2</b>	APCH CRS <b>183°</b>	Rwy ldg TDZE Arprt Elev <b>8025</b> <b>191</b> <b>195</b>	AL-699 [USAF]	DUKE FLD (EGLIN AF AUX NR3) (KEGI)
* When ALS inop, increase RVR to 55, vis to 1 mile.			ALSF-1 	MISSED APPROACH: Climb on DWG R-003 to 9 DME (BUBBE), then climbing left turn to 2300 direct DWG R-033/23 DME (PAPPY) and hold.

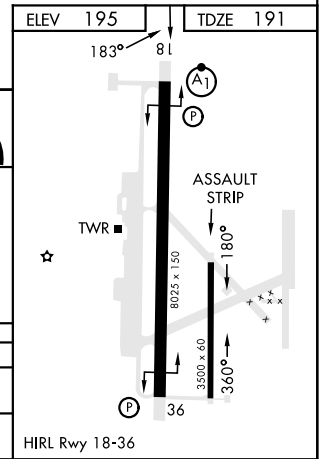
ATIS ★ <b>244.575</b>	EGLIN APP CON <b>125.1 281.45</b> (271° - 089°) <b>132.1 360.6</b> (090° - 270°)	TOWER ★ <b>133.2 290.425</b>	GND CON <b>123.25 251.125</b>
--------------------------	--	---------------------------------	----------------------------------



ELEV 195	TDZE 191
----------	----------



EMERG SAFE ALT 100 NM 3500	VGSIs and descent angles not coincident (Angle 3.00/TCH 60).		
CATEGORY	C	D	E
S-18*	560/35	369 (400-5%)	
CIRCLING	700-1½ 505 (600-1½)	760-2 565 (600-2)	780-2 585 (600-2)



# HI-TACAN Y RWY 18

SE-3, 31 OCT 2024 to 28 NOV 2024

SE-3, 31 OCT 2024 to 28 NOV 2024