

ALPENA, MICHIGAN

# HI-ILS or LOC RWY 1

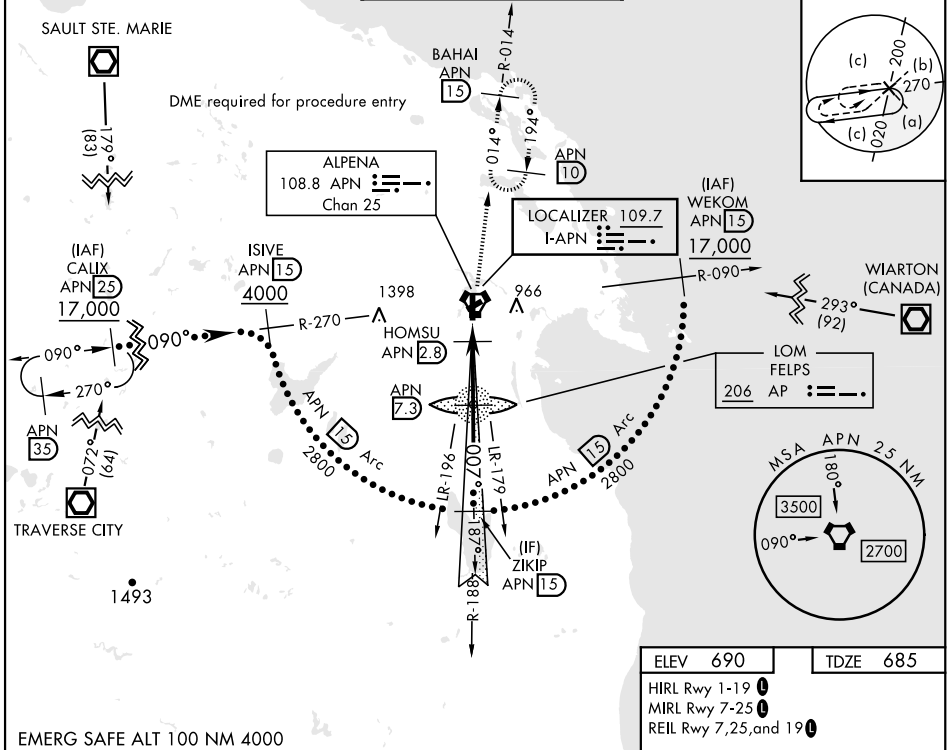
LOC I-APN <b>109.7</b>	APCH CRS <b>007°</b>	Rwy Idg TDZE Arprt Elev <b>9001 685 690</b>
---------------------------	-------------------------	--

AL-718 [USAF]

ALPENA COUNTY RGNL (KAPN)

DME required. * When ALS inop, increase vis to ¾ mile. ** When ALS inop, increase vis to 1 ½ miles.	MALSR 	MISSED APPROACH: Climb to 1300, then climbing right turn to 5000 on APN VORTAC R-014 to BAHAI/15 DME and hold. Continue climb-in-hold to 5000.
---	-----------	--

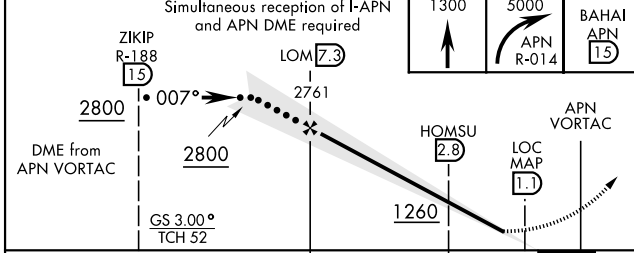
ATIS ★ <b>120.675 327.05</b>	ALPENA APP CON <b>128.425 379.3</b>	ALPENA TOWER ★ <b>121.35 (CTAF) 0 318.1</b>	GND CON <b>121.9 275.8</b>	UNICOM <b>122.95</b>
---------------------------------	--	--	-------------------------------	-------------------------



EC-1, 31 OCT 2024 to 28 NOV 2024

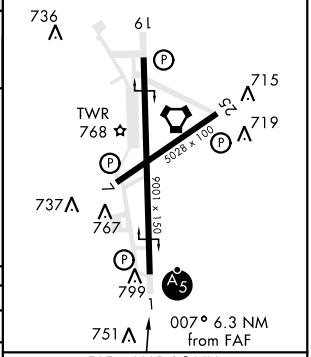
EC-1, 31 OCT 2024 to 28 NOV 2024

EMERG SAFE ALT 100 NM 4000



ELEV 690	TDZE 685
HIRL Rwy 1-19	MIRL Rwy 7-25
REIL Rwy 7,25, and 19	

CATEGORY	C	D	E
S-ILS 1*	885-½	200 (200-½)	
S-LOC 1**	1140-7/8	455 (500-7/8)	
CIRCLING	1220-1½ 530 (600-1½)	1280-2 590 (600-2)	1320-2¼ 630 (700-2¼)



FAF to MAP 6.3 NM					
Knots	120	140	160	180	200
Min:Sec	3:09	2:42	2:22	2:06	1:53

ALPENA, MICHIGAN  
Amdt 5D 13AUG20

45°05'N-83°34'W

ALPENA COUNTY RGNL (KAPN)

# HI-ILS or LOC RWY 1