

ALPENA, MICHIGAN

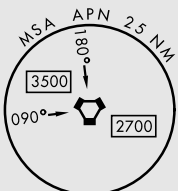
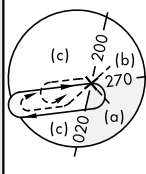
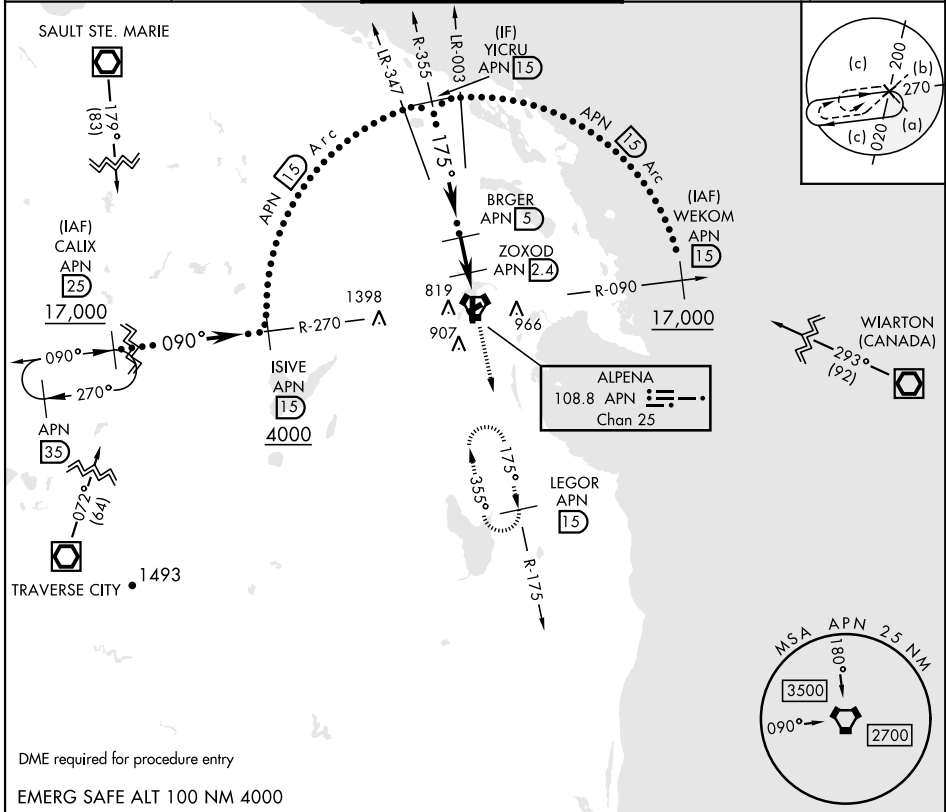
# HI-TACAN RWY 19

VORTAC APN <b>108.8</b> Chan <b>25</b>	APCH CRS <b>175°</b>	Rwy Ldg TDZE Arpt Elev <b>9001</b> <b>683</b> <b>690</b>	AL-718 [USAF]	ALPENA COUNTY RGNL (KAPN)
----------------------------------------------	-------------------------	-------------------------------------------------------------------------	---------------	---------------------------

DME required.

MISSED APPROACH: Climb to 5000 on APN R-175 to LEGOR (1.5 DME) and hold, continue climb in hold to 5000.

ATIS ★ <b>120.675 327.05</b>	ALPENA APP CON <b>128.425 379.3</b>	ALPENA TOWER ★ <b>121.35 (CTAF) 0 318.1</b>	GND CON <b>121.9 275.8</b>	UNICOM <b>122.95</b>
---------------------------------	----------------------------------------	------------------------------------------------	-------------------------------	-------------------------



YICRU R-355 1.5 2800	VGSi and descent angles not coincident (VGSi Angle 3.00/TCH 39)		5000	LEGOR APN 1.5	ELEV 690	TDZE 683
BRGER 5		ZOXOD 2.4	JUDBI 1	VORTAC		
3.23° TCH 55		2300	1380	2.6 NM	1.4 NM	6 NM
CATEGORY	C	D	E			
S-19	1140-1 3/8	457 (500-1 3/8)				
CIRCLING	1220-1 1/2 530 (600-1 1/2)	1280-2 590 (600-2)	1320-2 1/4 630 (700-2 1/4)			

ALPENA, MICHIGAN 45°05'N-83°34'W ALPENA COUNTY RGNL (KAPN)

# HI-TACAN RWY 19

EC-1, 31 OCT 2024 to 28 NOV 2024

EC-1, 31 OCT 2024 to 28 NOV 2024