

FEALX TWO DEPARTURE (RNAV) Departure Routes

FORT LAUDERDALE/HOLLYWOOD INTL (FLL)

FORT LAUDERDALE, FLORIDA

SE-3, 31 OCT 2024 to 28 NOV 2024

D-ATIS
135.0
CLNC DEL
128.4
CPDLC
GND/CON
121.4

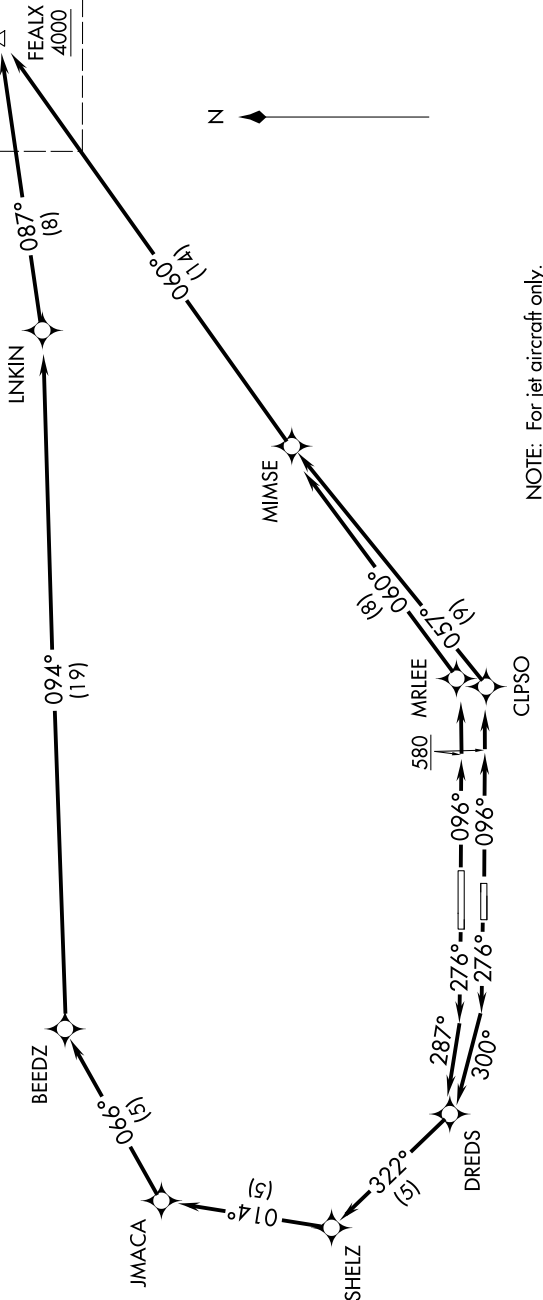
FORT LAUDERDALE TOWER
119.3 257.8
MIAMI DEP CON
126.05 251.1

TAKEOFF MINIMUMS
Rwys 10L/R, 28L/R: Standard with minimum
climb of 500' per NM to 580.

TOP ALTITUDE:
4000

RNAV 1 - DME/DME/IRU or GPS.
RADAR required.

See following
page for
transition
routes.



NOTE: For jet aircraft only.
NOTE: Accelerate to 250K, if unable, advise ATC.

(CONTINUED ON FOLLOWING PAGE)

NOTE: Chart not to scale.

SE-3, 31 OCT 2024 to 28 NOV 2024