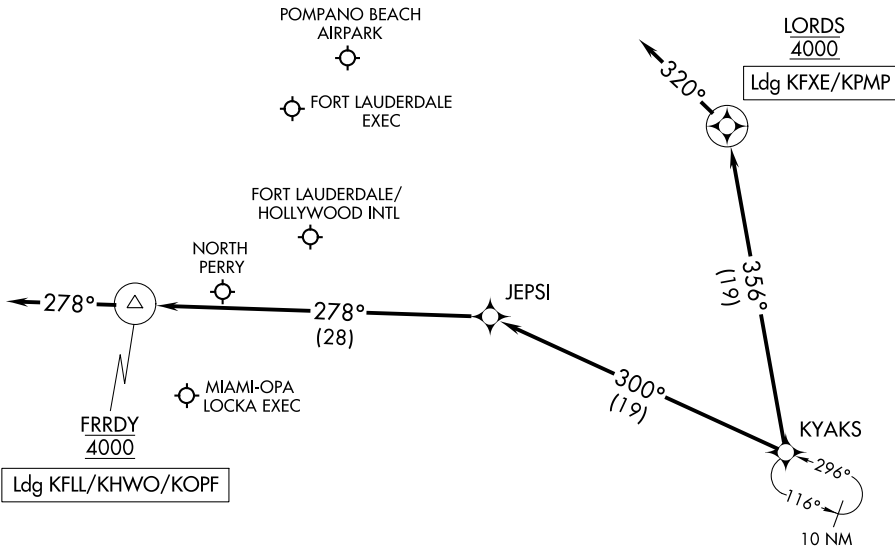


KYAKS THREE ARRIVAL (RNAV) Arrival Routes

FORT LAUDERDALE, FLORIDA

RNAV 1-GPS.
RADAR required.

- MIAMI APP CON 128.6 306.975
- FLL D-ATIS 135.0
- FXE ATIS 119.85
- HWO ATIS 135.475
- OPF ATIS 125.9
- PMP ATIS 120.55



NOTE: Turboprop and prop aircraft only.

NOTE: Chart not to scale.

ARRIVAL ROUTE DESCRIPTION

LANDING KFL/KHWO/KOPF: From KYAKS on track 300° to JEPSI, then on track 278° to cross FRRDY at 4000, then on track 278°. Expect RADAR vectors to final approach course.

LANDING KFXE/KPMP: From KYAKS on track 356° to cross LORDS at 4000, then on heading 320°. Expect RADAR vectors to final approach course.

SE-3, 31 OCT 2024 to 28 NOV 2024

SE-3, 31 OCT 2024 to 28 NOV 2024