

(LNDHY.LNDHY1) 19171

# LNDHY ONE ARRIVAL (RNAV)

AL-762 (FAA)

KAHULUI (OGG) (PHOG)

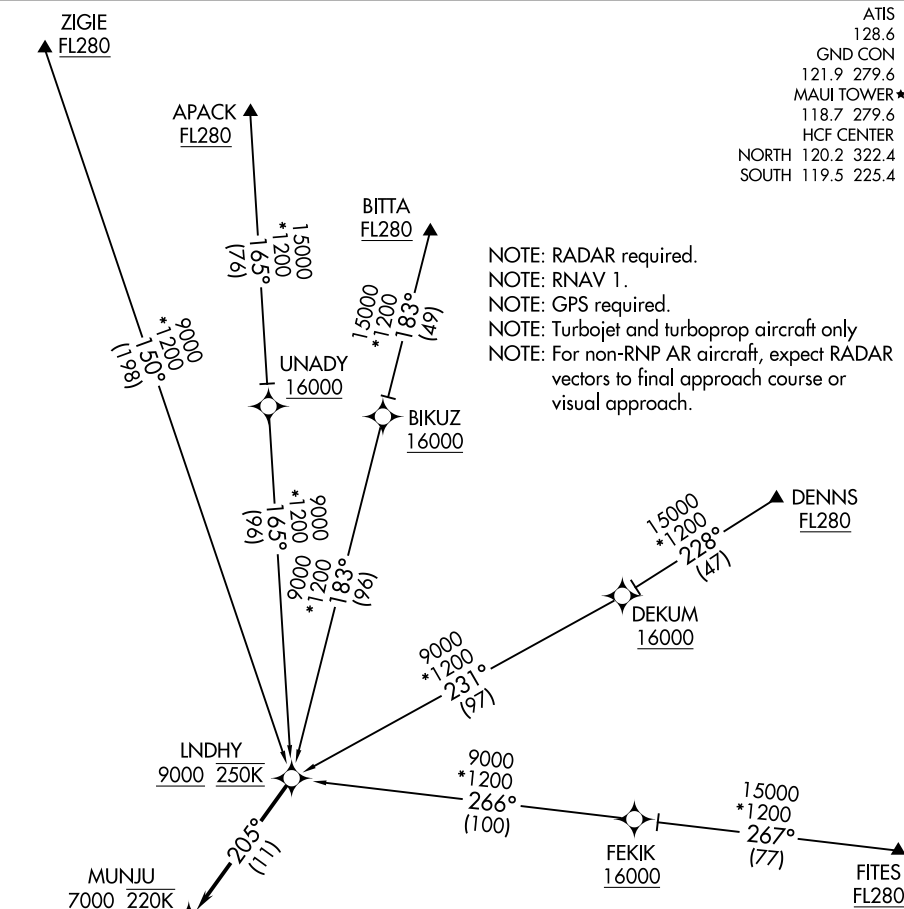
KAHULUI, HAWAII

ATIS 128.6  
 GND CON 121.9 279.6  
 MAUI TOWER\* 118.7 279.6  
 HCF CENTER  
 NORTH 120.2 322.4  
 SOUTH 119.5 225.4

NOTE: RADAR required.  
 NOTE: RNAV 1.  
 NOTE: GPS required.  
 NOTE: Turbojet and turboprop aircraft only  
 NOTE: For non-RNP AR aircraft, expect RADAR vectors to final approach course or visual approach.

PAC, 31 OCT 2024 to 26 DEC 2024

PAC, 31 OCT 2024 to 26 DEC 2024



### ARRIVAL ROUTE DESCRIPTION

- APACK TRANSITION (APACK.LNDHY1)
- BITTA TRANSITION (BITTA.LNDHY1)
- DENNS TRANSITION (DENNS.LNDHY1)
- FITES TRANSITION (FITES.LNDHY1)
- ZIGIE TRANSITION (ZIGIE.LNDHY1)

From LNDHY on track 205° to cross MUNJU at or above 7000 and at 220K, then on track 204° to cross HOMAI at 5000 and at 210K, then on track 204° . Expect RNAV (RNP)/ILS/Visual Approach Landing Rwy 2, as assigned by ATC.

NOTE: Chart not to scale.

# LNDHY ONE ARRIVAL (RNAV)

(LNDHY.LNDHY1) 20JUN19

KAHULUI, HAWAII

KAHULUI (OGG) (PHOG)