

APP CRS	Rwy Idg	6995
024°	TDZE	55
	Apt Elev	55

RNAV (RNP) Z RWY 2

KAHULUI (OGG)(PHOG)

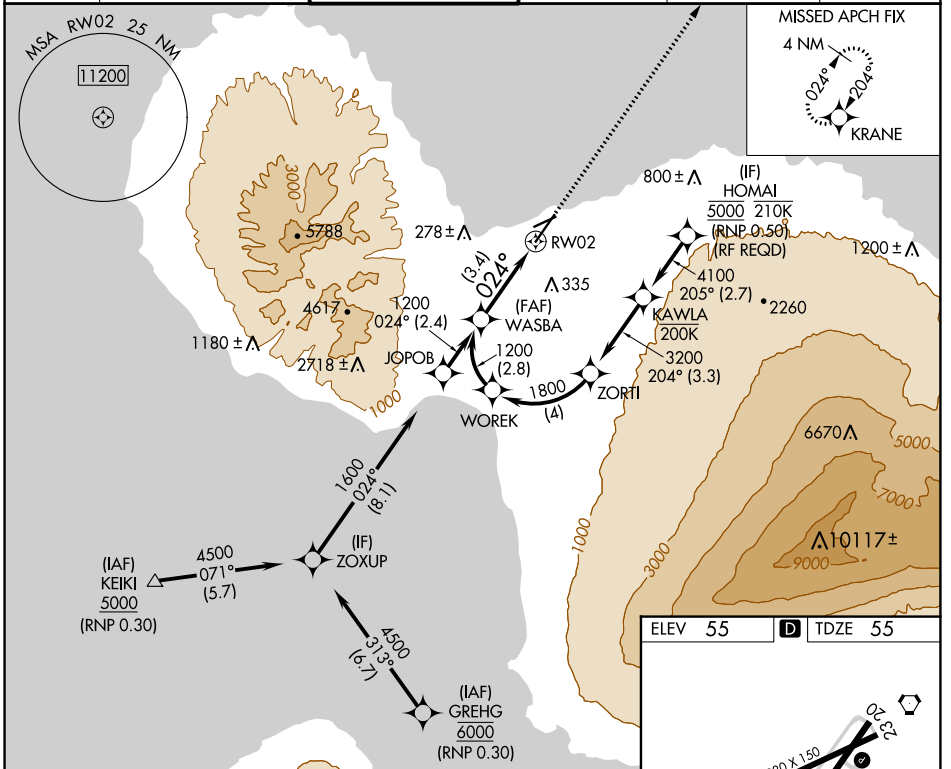
RNP AR APCH - GPS.

▼ For uncompensated Baro-VNAV systems, procedure NA below 14°C or above 54° C. When local altimeter setting not received, procedure NA. For inop ALS, increase RNP 0.30 all Cats visibility to 7/8 SM.

MALSR 

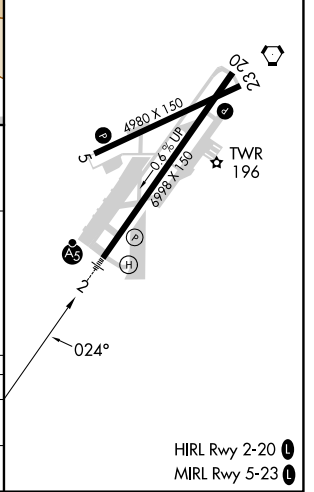
MISSED APPROACH: Climb to 3000 direct KRANE and hold.


ATIS	HCF APPROACH	MAUI TOWER ★	GND CON	CLNC DEL	UNICOM
128.6	120.2 322.4 (NORTH) 119.5 225.4 (SOUTH)	118.7 (CTAF) 0 279.6	121.9 279.6	120.6 290.5	122.95




ELEV 55	TDZE 55
---------	---------

WASBA	VGSi and RNAV glidepath not coincident (VGSi Angle 3.00/TCH 77).				3000	KRANE
1200					↑	✧
1200					See planview for multiple IF locations.	
GP 3.00°					024°	RW02
TCH 62					3.4 NM	
CATEGORY	A	B	C	D		
RNP 0.30 DA	394-1/2		339 (400-1/2)			
AUTHORIZATION REQUIRED						



HIRL Rwy 2-20 

MIRL Rwy 5-23 

PAC, 31 OCT 2024 to 26 DEC 2024

PAC, 31 OCT 2024 to 26 DEC 2024