

APP CRS	Rwy Idg	<b>6995</b>
<b>024°</b>	TDZE	<b>55</b>
	Apt Elev	<b>55</b>

# RNAV (GPS) Y RWY 2

KAHALUI (OGG)(PHOG)

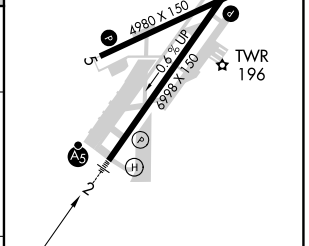
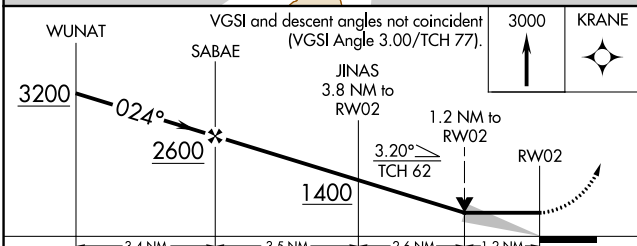
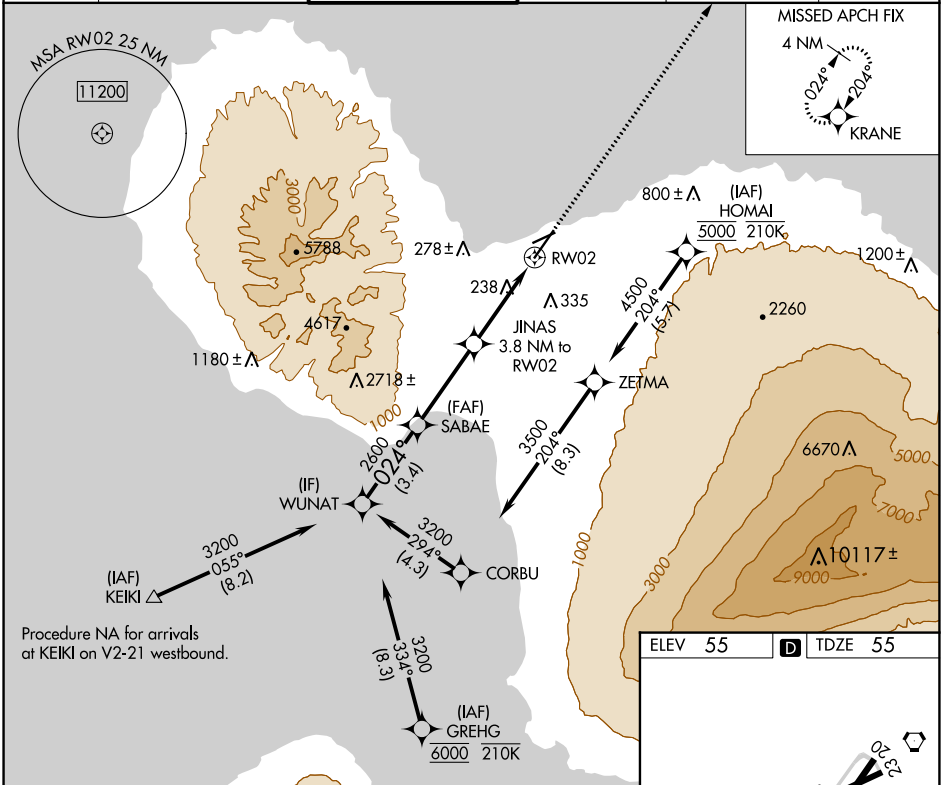
RNP APCH-GPS.

When Kahului altimeter setting not received, procedure NA.

MALSR

MISSED APPROACH: Climb to 3000 direct KRANE and hold.

ATIS <b>128.6</b>	HCF APPROACH <b>120.2 322.4 (NORTH)</b> <b>119.5 225.4 (SOUTH)</b>	MAUI TOWER ★ <b>118.7 (CTAF) 0 279.6</b>	GND CON <b>121.9 279.6</b>	CLNC DEL <b>120.6 290.5</b>	UNICOM <b>122.95</b>
----------------------	--	---	-------------------------------	--------------------------------	-------------------------



CATEGORY	A	B	C	D
LNVA MDA	500-½ 445 (500-½)		500-⅞ 445 (500-⅞)	
CIRCLING	500-1 445 (500-1)	620-1 565 (600-1)	740-2 685 (700-2)	1140-3 1085 (1100-3)

ELEV 55 TDZE 55

HIRL Rwy 2-20

MIRL Rwy 5-23

PAC, 31 OCT 2024 to 26 DEC 2024

PAC, 31 OCT 2024 to 26 DEC 2024