

BURNS FLAT, OKLAHOMA

# HI-VOR or TACAN RWY 17R

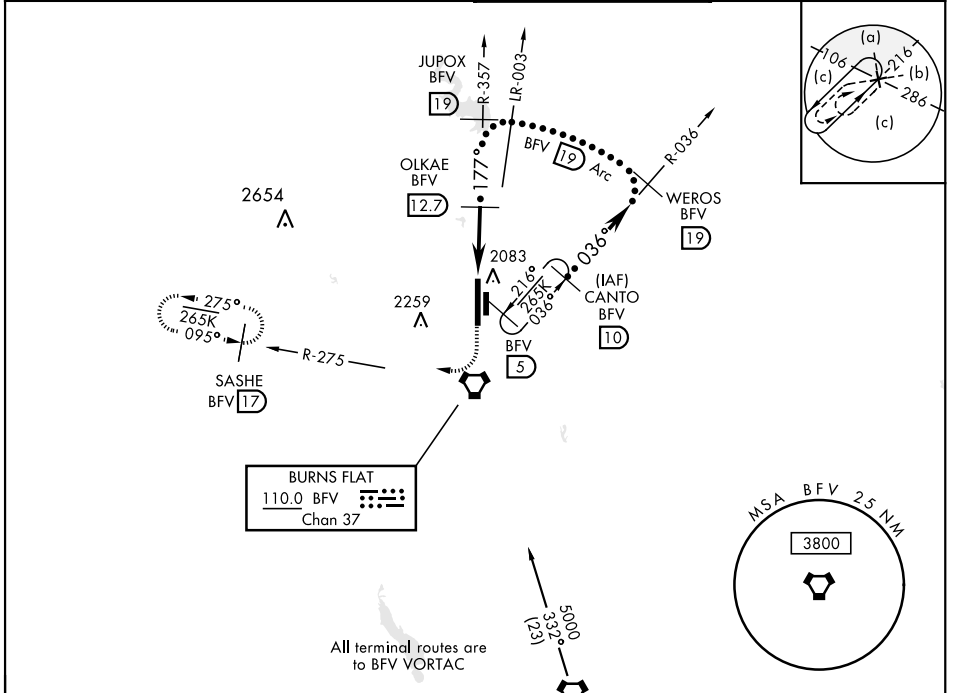
VORTAC BFV <b>110.0</b> Chan <b>37</b>	APCH CRS <b>177°</b>	Rwy Idg <b>13,503</b> TDZE <b>1922</b> Arprt Elev <b>1922</b>	AL-778 [USAF]	CLINTON-SHERMAN (KCSM)
--	-------------------------	---	---------------	------------------------

DME required

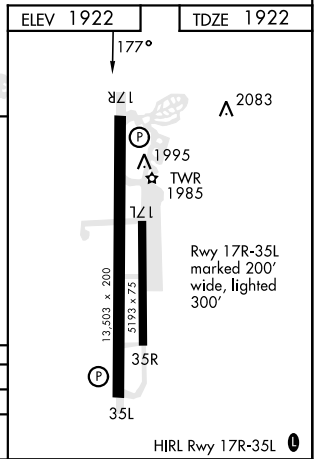
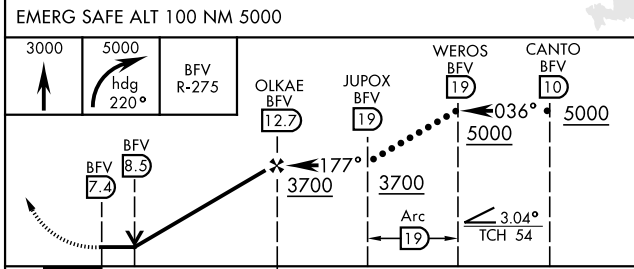
\* Circling not authorized E of Rwy 17R-35L.

MISSED APPROACH: Climb to 3000 then climbing right turn to 5000 via heading 220° and BFV R-275 to SASHE/17 DME and hold.

ASOS <b>118.45</b>	FORT WORTH CENTER <b>128.4 269.375</b>	TOWER ★ <b>119.6 (CTAF) 0 256.9</b>	GND CON <b>121.7 239.0</b>
-----------------------	---	--	-------------------------------



EMERG SAFE ALT 100 NM 5000	HOBART 111.8 HBR Chan 55	ELEV 1922	TDZE 1922
----------------------------	--------------------------------	-----------	-----------



CATEGORY	C	D	E
S-17R	2380-1½ 458 (500-1½)	2340-1¼ 418 (500-1¼)	2620-2½ 698 (700-2½)
CIRCLING*	2380-1½ 458 (500-1½)	2620-2¼ 698 (700-2¼)	2620-2½ 698 (700-2½)

BURNS FLAT, OKLAHOMA 35° 20' N - 99° 12' W CLINTON-SHERMAN (KCSM)

Amdt 3 25FEB21

# HI-VOR or TACAN RWY 17R

SC-1, 31 OCT 2024 to 28 NOV 2024

SC-1, 31 OCT 2024 to 28 NOV 2024