

WAAS CH 40217 W35A	APP CRS 355°	Rwy Idg 13503 TDZE 1913 Apt Elev 1922
--	------------------------	--

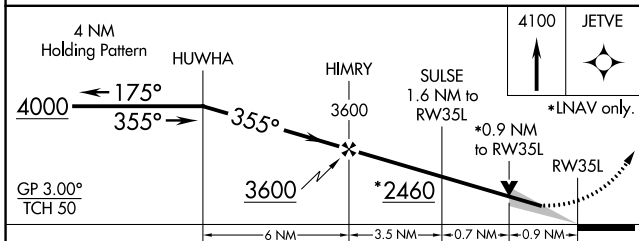
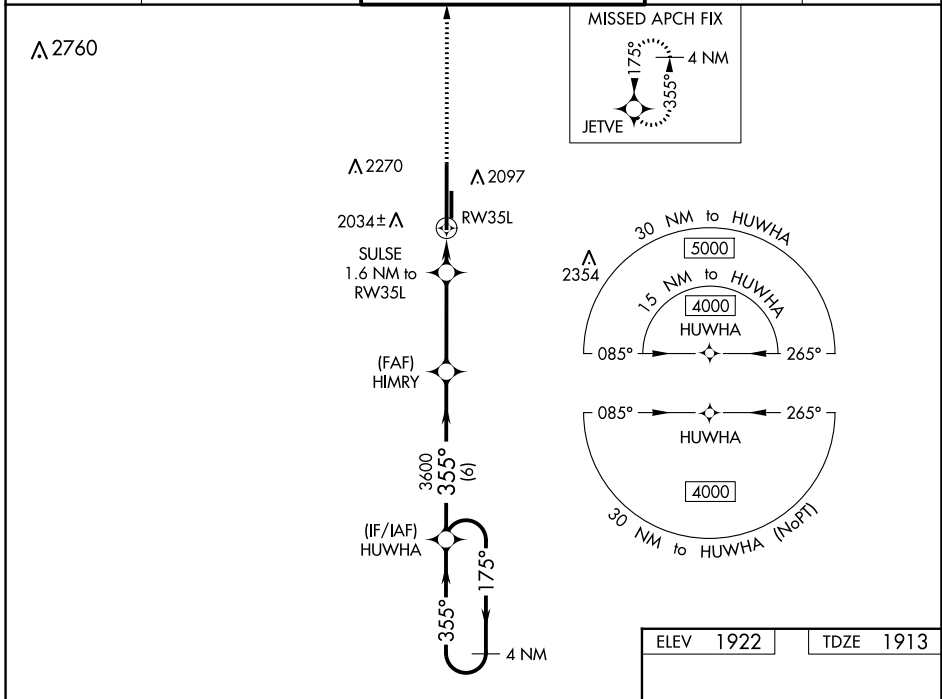
RNAV (GPS) RWY 35L

CLINTON/SHERMAN (CS/M)

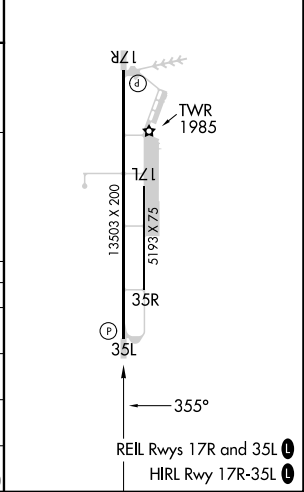
⚠ For uncompensated Baro-VNAV systems, LNAV/VNAV NA below -12°C (11°F) or above 54°C (130°F). Circling NA east of Rwy 17R-35L. DME/DME RNP-0.3 NA.

⚠ MISSED APPROACH: Climb to 4100 direct JETVE and hold.

ASOS 118.45	FORT WORTH CENTER 128.4 269.37	CLINTON/SHERMAN TOWER* 119.6 (CTAF) 256.9	GND CON 121.7 239.0	UNICOM 122.95
-----------------------	--	---	-------------------------------	-------------------------



ELEV 1922	TDZE 1913
-----------	-----------



CATEGORY	A	B	C	D	E
LPV DA		2113-3/4	200 (200-3/4)		
LNAV/VNAV DA		2163-3/4	250 (300-3/4)		
LNAV MDA		2240-1	327 (400-1)		
C CIRCLING	2340-1 418 (500-1)	2380-1 458 (500-1)	2380-1 1/2 458 (500-1 1/2)	2620-2 1/4 698 (700-2 1/4)	2620-2 1/2 698 (700-2 1/2)

SC-1, 31 OCT 2024 to 28 NOV 2024

SC-1, 31 OCT 2024 to 28 NOV 2024