

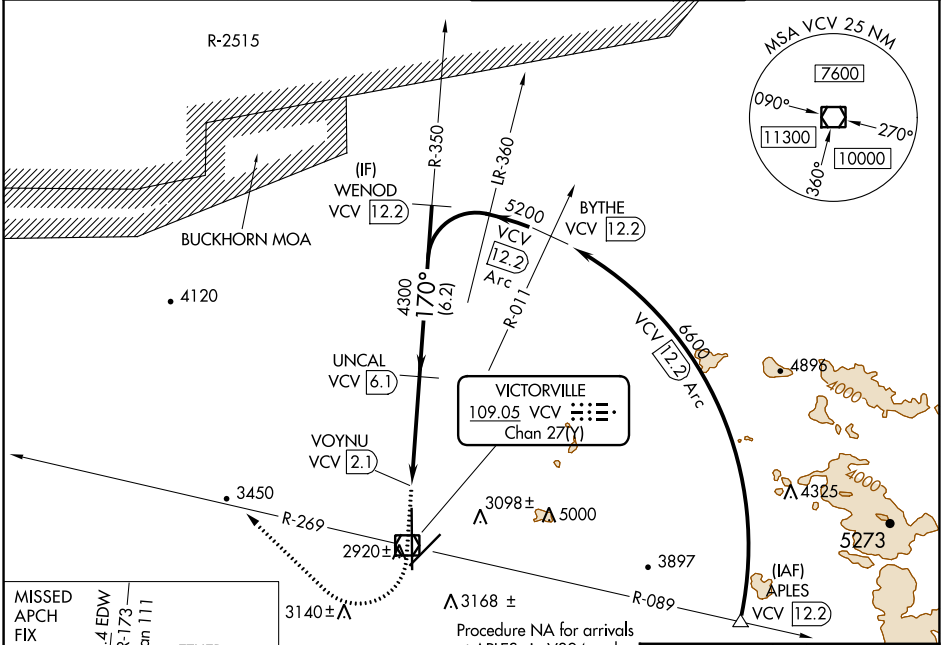
VOR/DME VCV <b>109.05</b> Chan 27(Y)	APP CRS <b>170°</b>	Rwy Idg TDZE Apt Elev <b>13052</b> <b>2825</b> <b>2885</b>
--	------------------------	---

**VOR/DME RWY 17**  
SOUTHERN CALIFORNIA LOGISTICS (VCV)

**⚠** When local altimeter setting not received, use Edwards AFB altimeter setting and increase all MDA 160 feet. Increase all visibilities 1/2 mile. Circling NA for Cats C and D southeast of Rwy 35 and 21.

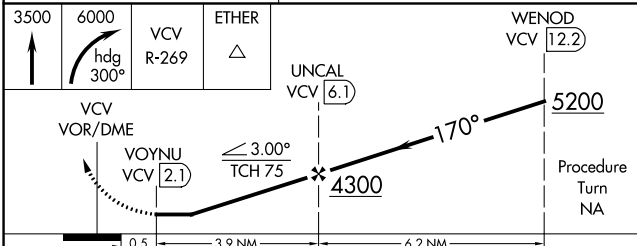
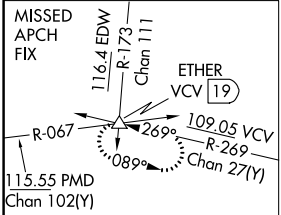
**MISSED APPROACH:** Climb to 3500, then climbing right turn to 6000 via heading 300° and VCV R-269 to ETHER INT and hold.

ATIS ★ <b>135.475</b>	JOSHUA APP CON <b>124.55 363.0</b>	VICTORVILLE TOWER ★ <b>118.35 (CTAF) 282.225</b>	GND CON <b>124.45</b>
--------------------------	---------------------------------------	---	--------------------------



SW-3, 31 OCT 2024 to 28 NOV 2024

SW-3, 31 OCT 2024 to 28 NOV 2024



CATEGORY	A	B	C	D
S-17	3200/50	375 (400-1)		3200/60 375 (400-1 1/4)
CIRCLING	3360-1 475 (500-1)	3420-1 535 (600-1)	3580-2 695 (700-2)	3780-3 895 (900-3)

ELEV	2885	TDZE	2825
------	------	------	------

