

LOC/DME I-HCV 110.3 Chan 40	APP CRS 052°	Rwy Idg 6215 TDZE 947 Apt Elev 947
---	------------------------	---

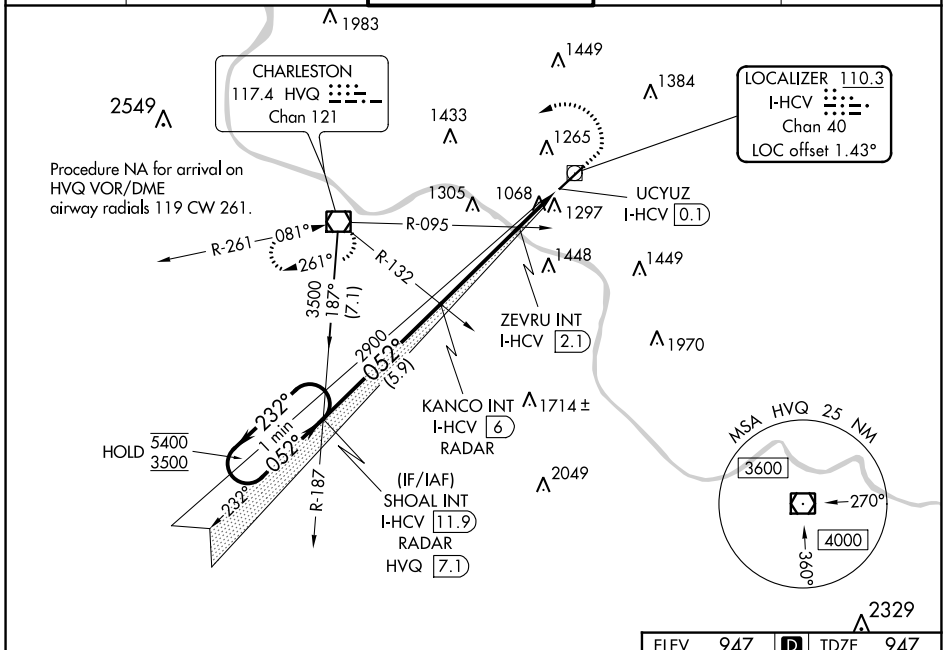
ILS or LOC RWY 5

WEST VIRGINIA INTL YEAGER (CRW)

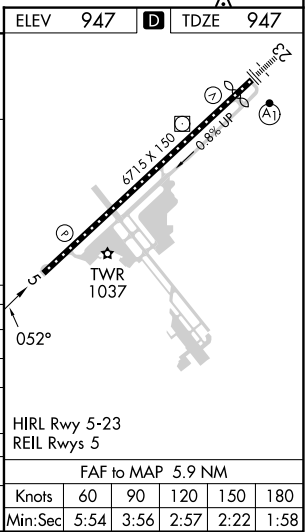
Autopilot coupled approach NA below 1300.

MISSED APPROACH: Climb to 1800 then climbing left turn to 3500 direct HVQ VOR/DME and hold.

ATIS 127.6	CHARLESTON APP CON 124.1 269.125	CHARLESTON TOWER 125.7 257.8	GND CON 121.8 348.6	CLNC DEL 118.55
----------------------	--	--	-------------------------------	---------------------------



One Minute Holding Pattern	SHOAL INT I-HCV [11.9] RADAR	KANCO INT I-HCV [6] RADAR	ZEVRU INT I-HCV [2.1]	I-HCV DME ANTENNA	UCYUZ I-HCV [0.1]
5400 ← 232°	3500 → 052°	2900	1640	I-HCV [1.1]	
GS 3.00° TCH 56		5.9 NM	3.9 NM	1 NM	1 NM 0.1
CATEGORY	A	B	C	D	
S-ILS 5		1197/40	250 (300-¾)		
S-LOC 5	1640/55	693 (700-1)	1640-2	693 (700-2)	
C CIRCLING	1640-1	693 (700-1)	1760-2½ 813 (900-2½)	1880-3 933 (1000-3)	
ZEVRU FIX MINIMUMS (DUAL VOR RECEIVERS OR DME REQUIRED)					
S-LOC 5		1320/55	373 (400-1)		
C CIRCLING	1600-1	653 (700-1)	1760-2½ 813 (900-2½)	1880-3 933 (1000-3)	



NE-4, 31 OCT 2024 to 28 NOV 2024

NE-4, 31 OCT 2024 to 28 NOV 2024

FAF to MAP 5.9 NM					
Knots	60	90	120	150	180
Min:Sec	5:54	3:56	2:57	2:22	1:58