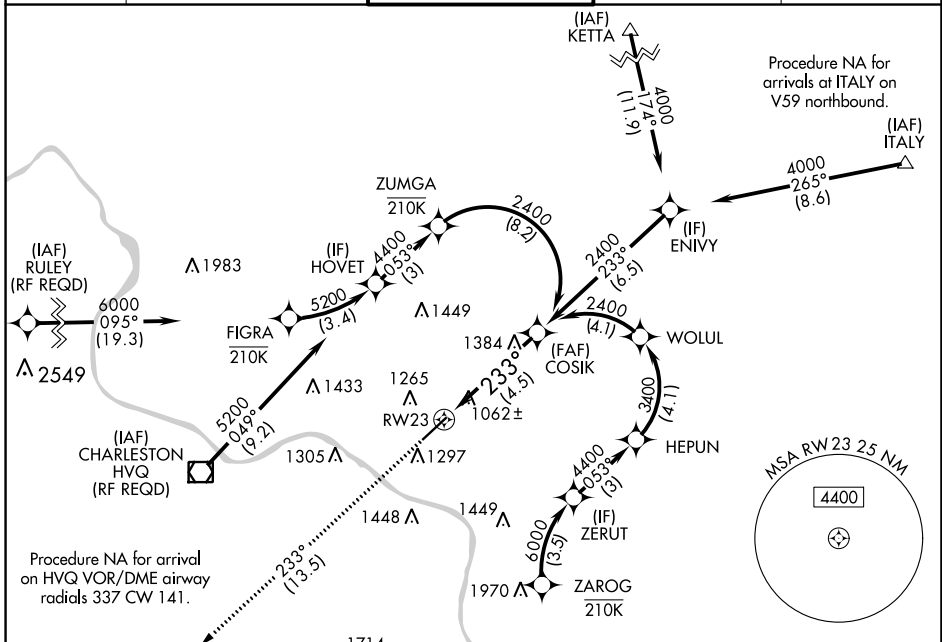


|             |          |             |
|-------------|----------|-------------|
| APP CRS     | Rwy Idg  | <b>6215</b> |
| <b>233°</b> | TDZE     | <b>931</b>  |
|             | Apt Elev | <b>947</b>  |

# RNAV (RNP) Z RWY 23

WEST VIRGINIA INTL YEAGER (CRW)

|   |                      |                    |   |               |
|---|----------------------|--------------------|---|---------------|
| RNP AR APCH - GPS.  |                      | ALSF-1             | MISSED APPROACH:<br>Climb to 4000 on track<br>233° to CITMA and hold. |               |
| <p>For uncompensated Baro-VNAV systems, procedure NA below -15°C or above 54°C. For inop ALS, increase RNP 0.30 all Cats visibility to 1½ SM.</p> |                      |                    |   |               |
| ATIS  | CHARLESTON APP CON   | CHARLESTON TOWER   | GND CON   | CLNC DEL      |
| <b>127.6</b>  | <b>124.1 269.125</b> | <b>125.7 257.8</b> | <b>121.8 348.6</b>  | <b>118.55</b> |



NE-4, 31 OCT 2024 to 28 NOV 2024

NE-4, 31 OCT 2024 to 28 NOV 2024

|          |          |          |
|----------|----------|----------|
| ELEV 947 | <b>D</b> | TDZE 931 |
|----------|----------|----------|

4000 CITMA  
↑ tr 233°

See planview for multiple IF locations.

COSIK 2400

RW23 233° 2400

GP 3.00° TCH 56

4.5 NM

|             |   |         |              |   |
|-------------|---|---------|--------------|---|
| CATEGORY    | A | B       | C            | D |
| RNP 0.30 DA |   | 1419/60 | 488 (500-1½) |   |

**AUTHORIZATION REQUIRED**

HIRL Rwy 5-23  
REIL Rwy 5