

NDB or GPS-A

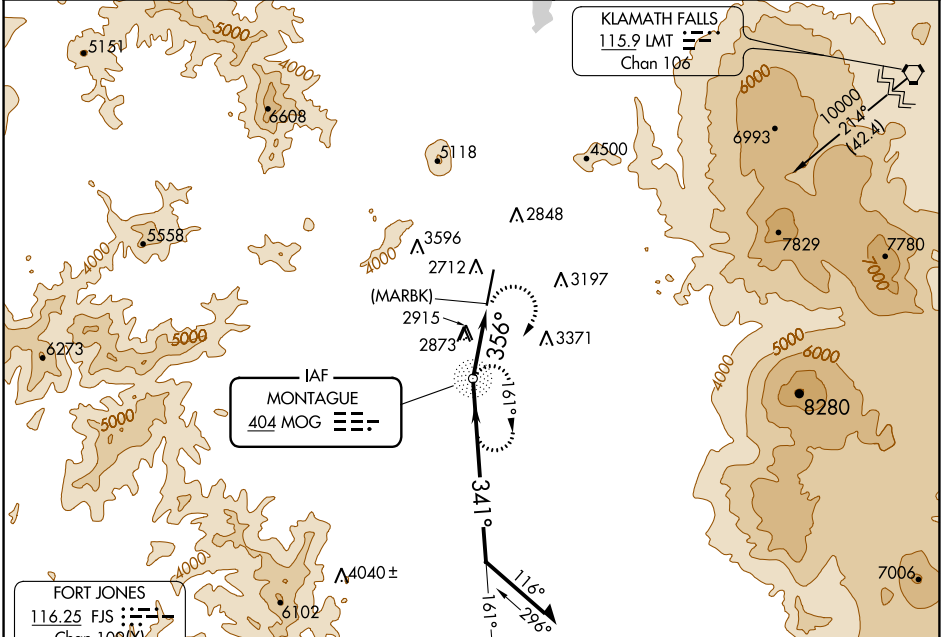
SISKIYOU COUNTY (SIY)

NDB MOG 404	APP CRS 356°	Rwy ldg TDZE Apt Elev N/A 2651
-----------------------	------------------------	---

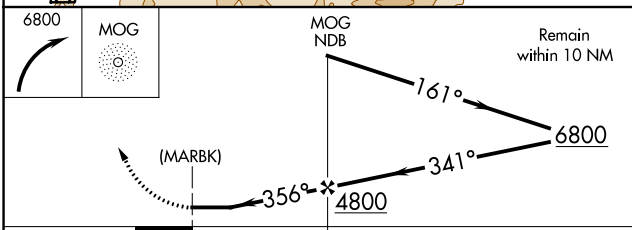
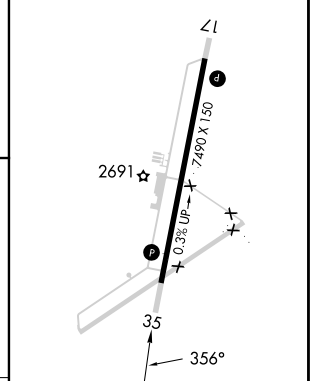
NA Use Siskiyou County altimeter setting; when not available, use Montague-Yreka Rohrer Fld altimeter setting; when neither received, procedure not authorized. Circling NA for Cats C and D west of Rwy 17-35.

MISSED APPROACH: Climbing right turn to 6800 direct MOG NDB and hold.

ASOS 121.125	SEATTLE CENTER 124.85 306.3	UNICOM 123.0 (CTAF)
------------------------	---------------------------------------	-------------------------------



ELEV 2651	MIRL Rwy 17-35
	REIL Rws 17 and 35



CATEGORY	FAF to MAP 2.7 NM				
	A	B	C	D	
CIRCLING	3760-1¼ 1109 (1200-1¼)	3760-1½ 1109 (1200-1½)	3980-3 1329 (1400-3)	4220-3 1569 (1600-3)	
	Knots: 60	90	120	150	180
	Min:Sec: 2:42	1:48	1:21	1:05	0:54

SW-2, 31 OCT 2024 to 28 NOV 2024

SW-2, 31 OCT 2024 to 28 NOV 2024