

WAAS CH 86206 W36A	APP CRS 356°	Rwy Idg TDZE Apt Elev	8002 200 203
--	------------------------	-----------------------------	---

RNAV (GPS) RWY 36

VALDOSTA RGNL (VLD)

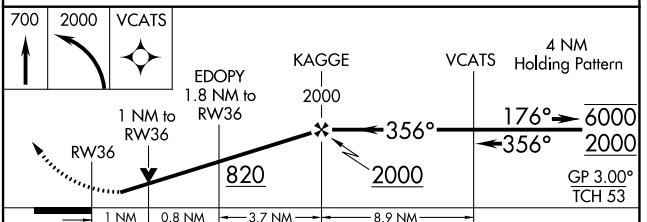
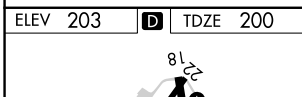
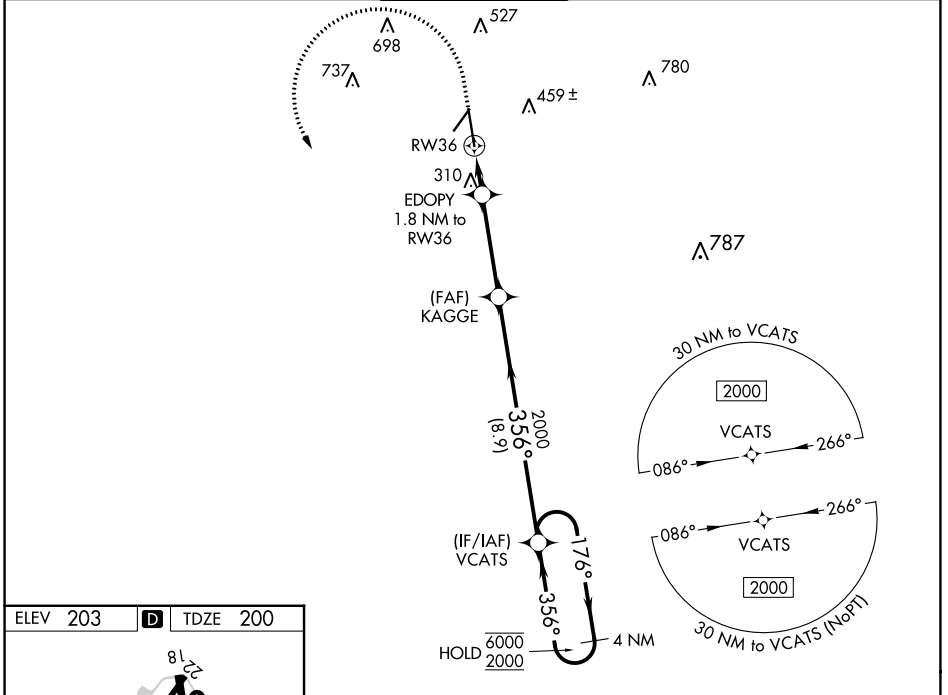
RNP APCH - GPS.

⚠ For uncompensated Baro-VNAV systems, LNAV/VNAV NA below -4°C or above 54°C. Rwy 36 helicopter visibility reduction below ¾ SM NA. For inop ALS, increase LPV and LNAV/VNAV all Cats visibility to ¾ SM and LNAV all Cats visibility to 1 SM.

MALSR

MISSED APPROACH: Climb to 700 then climbing left turn to 2000 direct VCATS and hold.

ASOS 126.225	VALDOSTA APP CON * 126.6 285.6	VALDOSTA TOWER * 128.35 (CTAF)	GND CON 121.7	UNICOM 122.95
------------------------	--	--	-------------------------	-------------------------



CATEGORY	A	B	C	D
LPV DA		489-¾ 289 (300-¾)		
LNAV/VNAV DA		482-¾ 282 (300-¾)		
LNAV MDA		560-¾ 360 (400-¾)		
CIRCLING	640-1 437 (500-1)	700-1 497 (500-1)	900-2 697 (700-2)	1020-2¾ 817 (900-2¾)

SE-4, 31 OCT 2024 to 28 NOV 2024

SE-4, 31 OCT 2024 to 28 NOV 2024