

VOR/DME OTK 114.8 Chan 95	APP CRS 338°	Rwy Idg 8002 TDZE 200 Apt Elev 203
---	------------------------	---

VOR RWY 36

VALDOSTA RGNL (VLD)

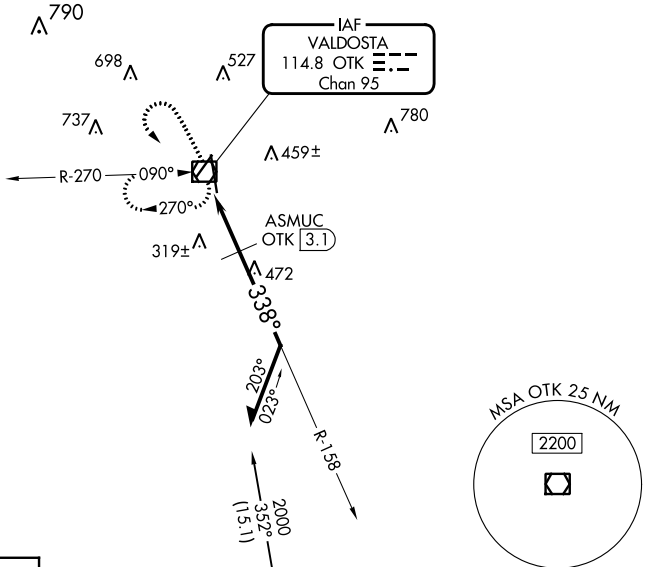
⚠ Rwy 36 helicopter visibility reduction below $\frac{3}{4}$ SM NA. For inop ALS, increase S-36 Cats A/B visibility to 1 SM and Cats C/D to 1 $\frac{1}{2}$ SM; ASMUC FIX MINIMUMS: increase S-36 all Cats visibility to 1 SM.

MALSR

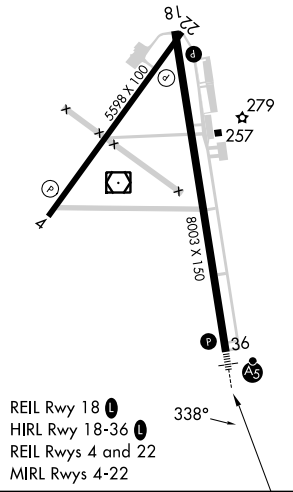


MISSED APPROACH: Climb to 1200 then climbing left turn to 2000 direct OTK VOR/DME and hold, continue climb-in-hold to 2000.

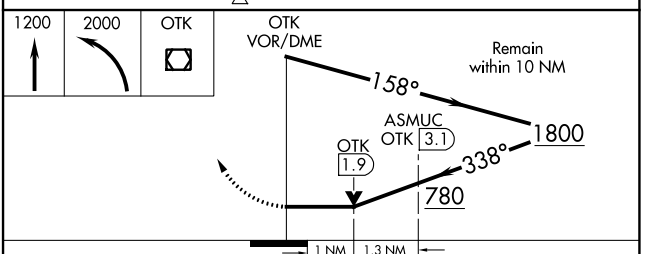
ASOS 126.225	VALDOSTA APP CON * 126.6 285.6	VALDOSTA TOWER * 128.35 (CTAF) 0	GND CON 121.7	UNICOM 122.95
------------------------	--	--	-------------------------	-------------------------



ELEV 203	D	TDZE 200
----------	----------	----------



REIL Rwy 18
HIRL Rwy 18-36
REIL Rwy 4 and 22
MIRL Rwy 4-22



CATEGORY	A	B	C	D
S-36	780- $\frac{3}{4}$	580 (600- $\frac{3}{4}$)	780-1 $\frac{1}{4}$	580 (600-1 $\frac{1}{4}$)
CIRCLING	780-1	577 (600-1)	900-2 697 (700-2)	1020-2 $\frac{3}{4}$ 817 (900-2 $\frac{3}{4}$)
ASMUC FIX MINIMUMS				
S-36	580- $\frac{3}{4}$		380 (400- $\frac{3}{4}$)	
CIRCLING	640-1 437 (500-1)	700-1 497 (500-1)	900-2 697 (700-2)	1020-2 $\frac{3}{4}$ 817 (900-2 $\frac{3}{4}$)

SE-4, 31 OCT 2024 to 28 NOV 2024

SE-4, 31 OCT 2024 to 28 NOV 2024